

MIDTOWN

NEW YORK  
NY

# 285 MADISON AVENUE



# SPACE DETAILS

## LOCATION

East block between East 40th and 41st Streets

## APPROXIMATE SIZE

### Space A\*

Ground Floor	1,679 SF
Mezzanine	500 SF

### Space B\*

Ground Floor	1,650 SF
Mezzanine	1,150 SF

Total 4,979 SF

*\*Can be combined*

## CEILING HEIGHT

Ground Floor 20 FT

## TERM

Negotiable

## POSSESSION

Arranged

## SITE STATUS

Currently Dr Smood and minigrow

## NEIGHBORS

Zara, Sephora, Chipotle Mexican Grill, Zuma, Pret A Manger, Starbucks, Joe & The Juice and CVS pharmacy

## COMMENTS

Features new glass façade

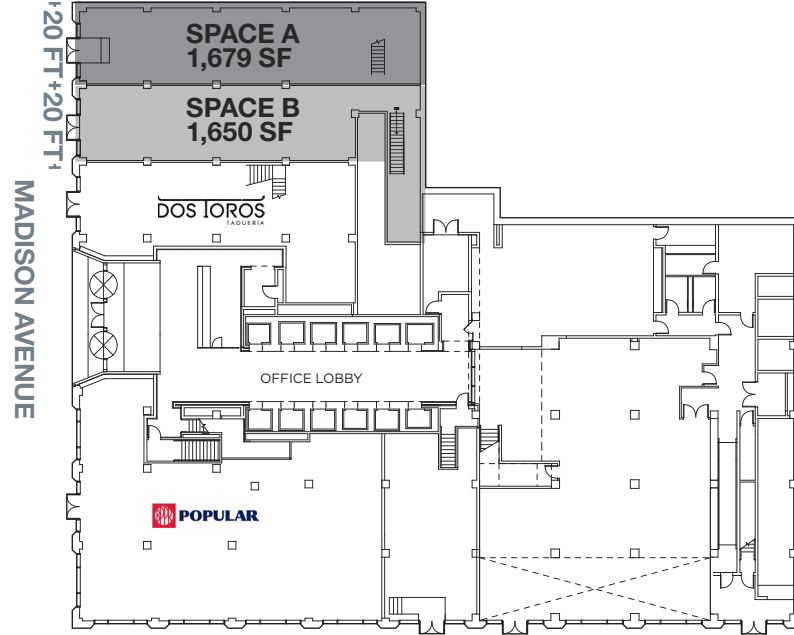
Highly visible

Surrounded by dense office population with over 1 million employee in the area

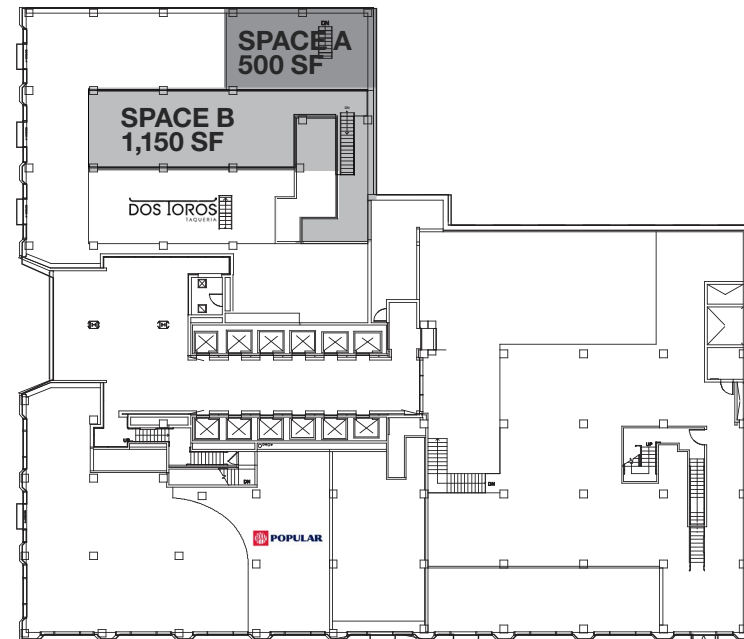
Pedestrian count averages over 5,000 per hour

Steps from Grand Central Terminal/Station bustling 750,000 commuters per day

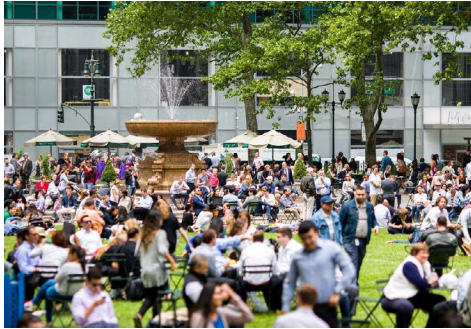
## GROUND FLOOR



## MEZZANINE



# AREA IMAGES



WEST 43RD STREET		EAST 43RD STREET	
WEST 42ND STREET		EAST 42ND STREET	
WEST 40TH STREET		EAST 40TH STREET	

# CONTACT EXCLUSIVE AGENTS

**HARRISON ABRAMOWITZ**     **JASON PRUGER**  
 212.372.2467                      212.372.2092  
 habramowitz@ngkf.com        jpruger@ngkf.com

