



425

FIFTH AVENUE | NYC

NYC
RFR
RETAIL



425

FIFTH
AVENUE | NYC

**18,561 SF
AVAILABLE**
on the corner of
Fifth Ave & 38th St

A Multi-level Corner Flagship Opportunity In NYC's *busiest* Retail Corridor

Situated at the base of a luxury 56-story office & residential tower directly across from Lord & Taylor, WeWork Headquarters and 2 blocks from New York's iconic Bryant Park.

Some of the best *retail shopping* in the city –

Steps from the 34th Street shopping promenade, New York Public Library's main branch, the Empire State Building, Rockefeller Center and Grand Central Terminal.

A 24/7 location with a mix of local and international tourists, hotel guests, and shoppers.

105 FT of *Wrap-Around* FRONTAGE

New GLASS
WITH
Maximum
EXPOSURES



FOOT TRAFFIC

Fifth Avenue

18,636 Midweek Day
110,206 Typical Week

38th Street

6,626 Midweek Day
33,195 Typical Week

TOTAL VISITORS 
143,401 Typical Week

ARTIST RENDERING

SHOW OFF
YOUR *Style*

*15 foot Ground Floor
Ceiling Heights*



ARTIST RENDERING

ENJOY
THE *View*

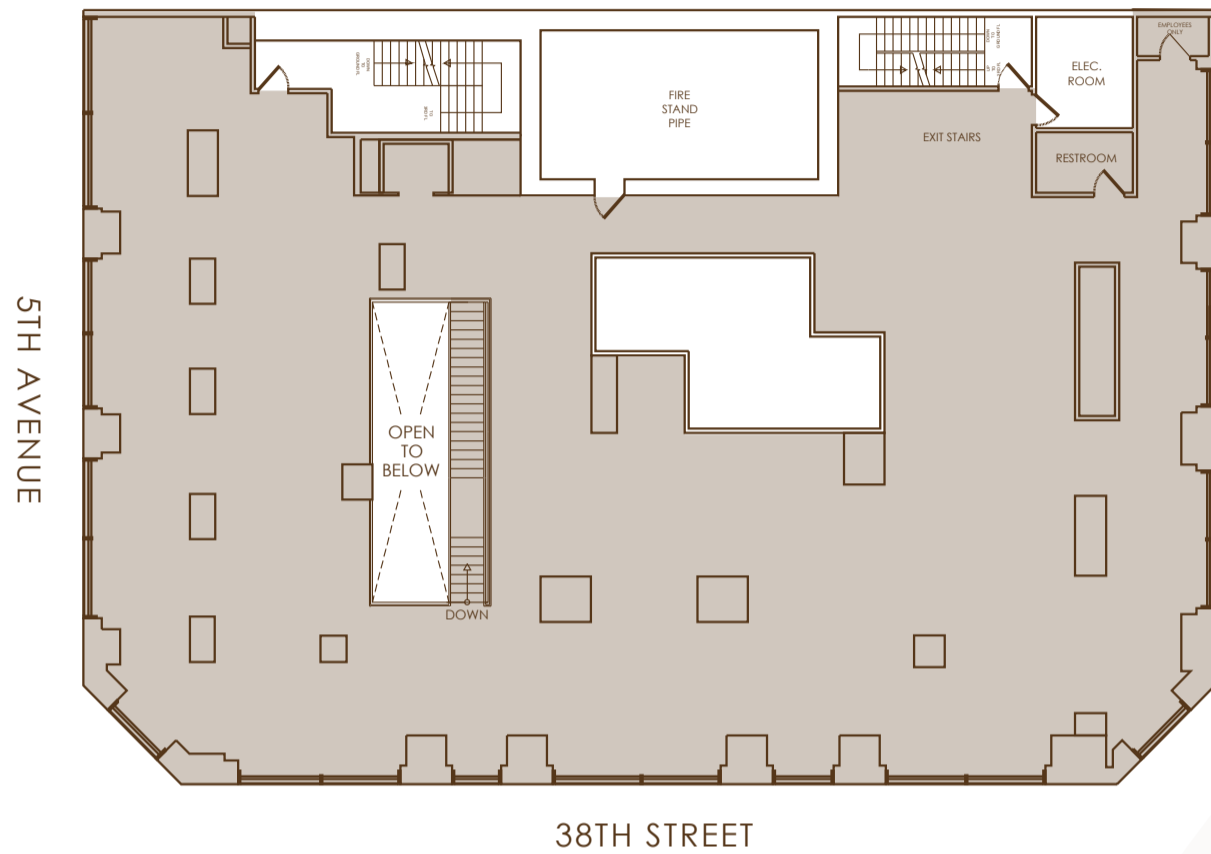
6,887 SF
Second Level

ARTIST RENDERING

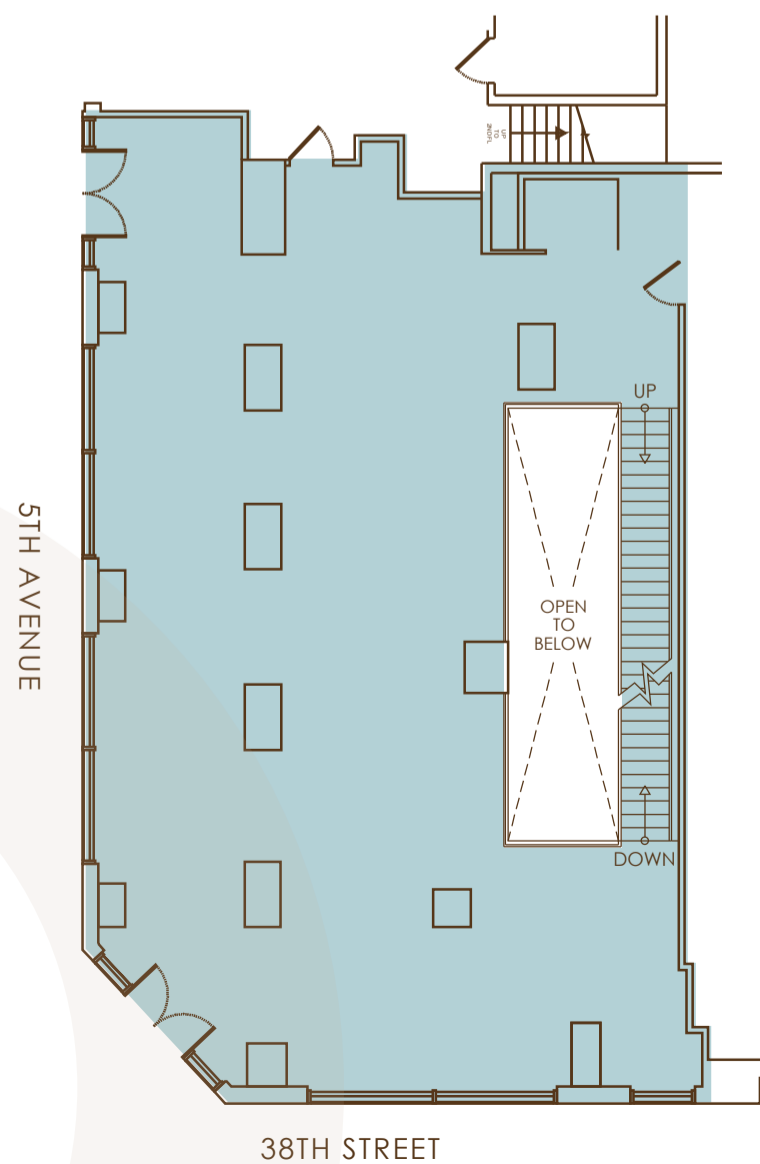
FLOOR PLANS

Impressive FLOOR PLATES

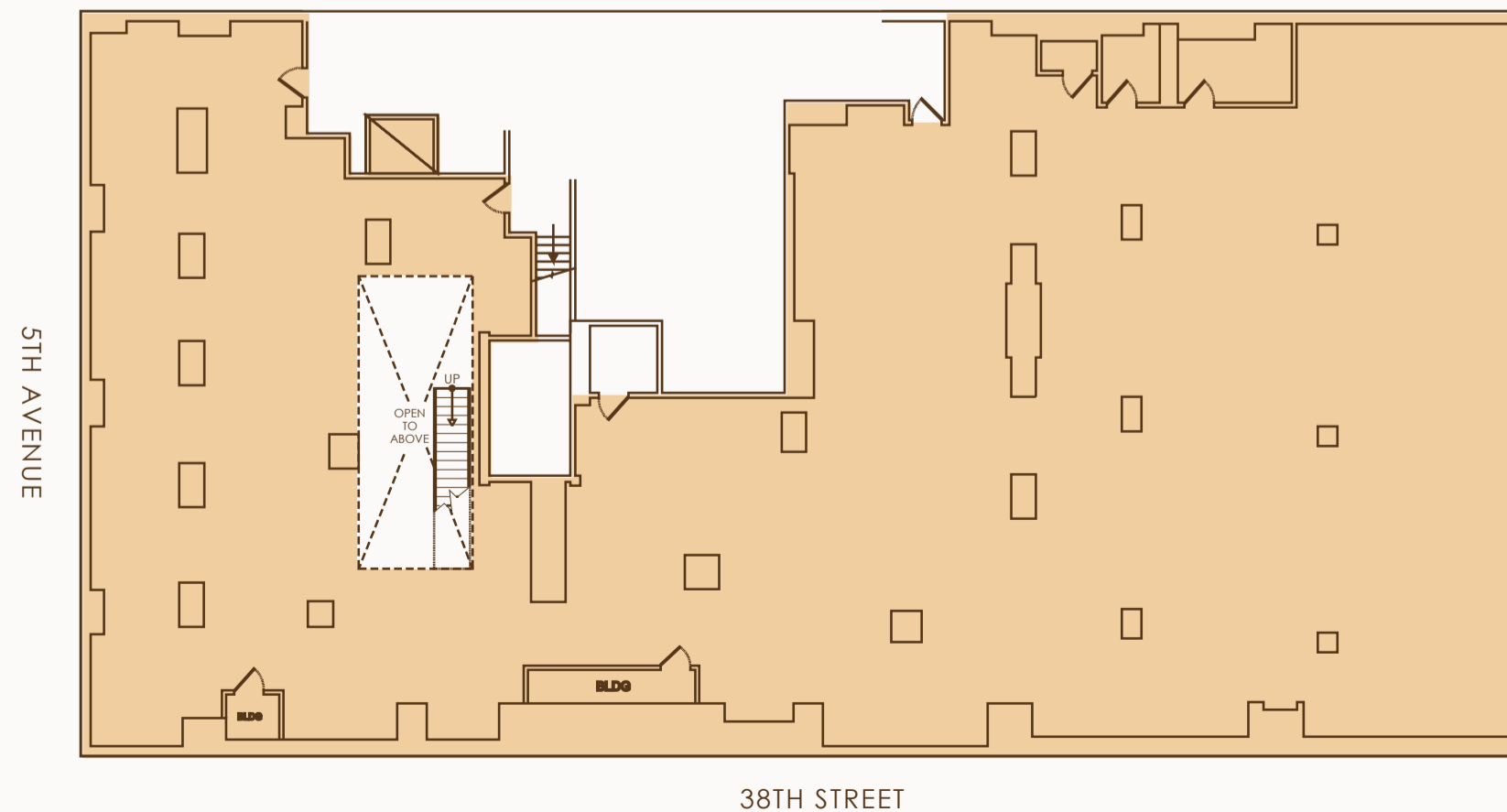
A wide variety of retail configurations, comprised of over 18,000 SF on the lower level, ground floor and second floor.



6,887 SF
Second Level




2,660 SF
Ground Level



9,014 SF
Lower Level



VICINITY

 **10**
Subway Lines

 **15**
Bus Routes

 **8**
CitiBike Stations



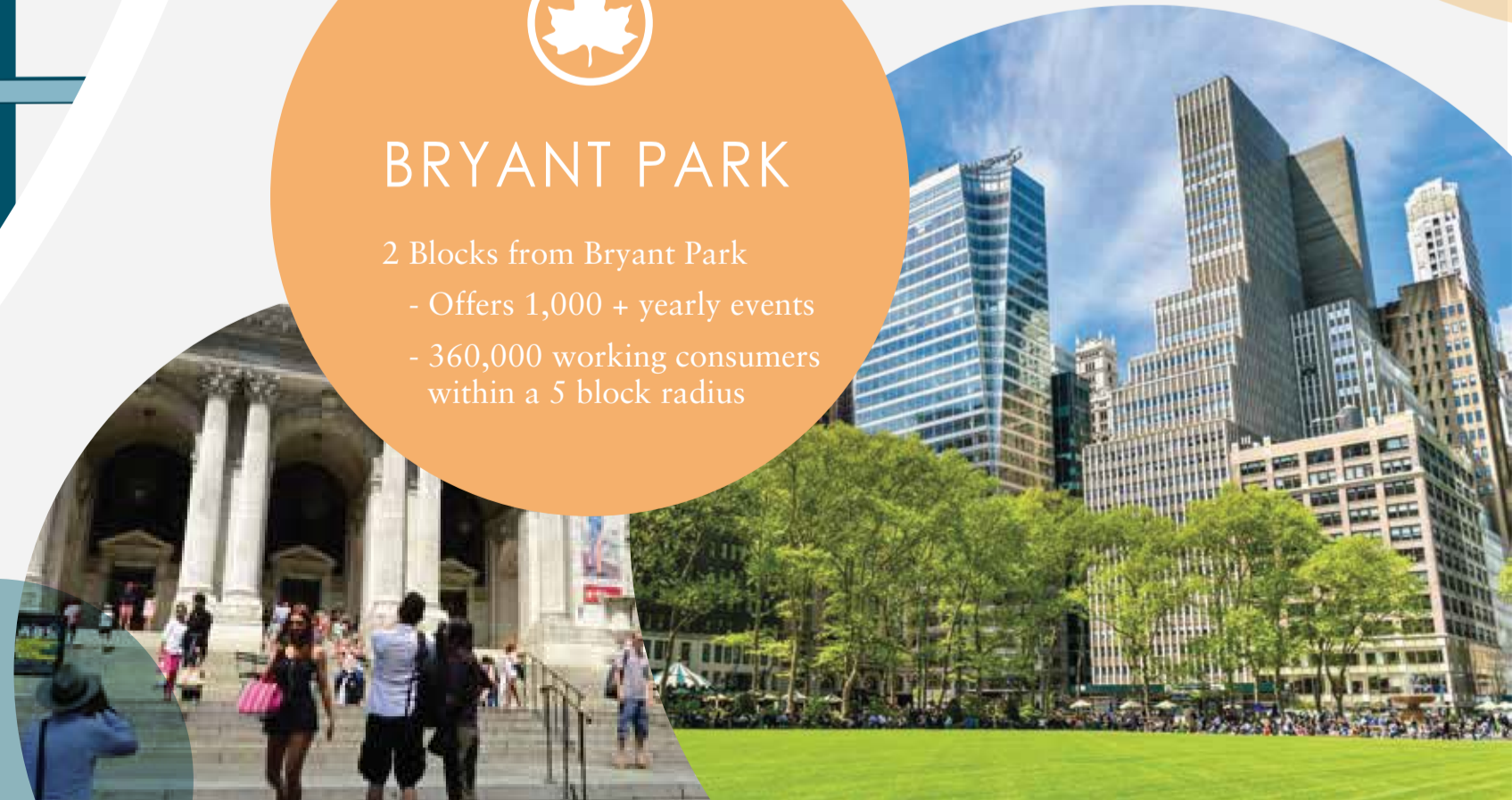
FIFTH AVE

An established retail market surrounded by NYC's most renowned attractions & fashion's biggest names.



BRYANT PARK

2 Blocks from Bryant Park
- Offers 1,000 + yearly events
- 360,000 working consumers within a 5 block radius



425
FIFTH
AVENUE | NYC

JONATHAN REIFLER

212.308.2061
jreifler@rfr.com

nyc
RFR
RETAIL