



150 EAST 72ND STREET

UPPER EAST SIDE

SOUTHEAST
CORNER OF
LEXINGTON
AVENUE AND
72ND STREET

RFR
RETAIL



THE
DARTMOUTH
COMPANY



SITE DETAILS

THE SPACE

1,295 SF of Ground Floor Space


Located on the southeast corner of
Lexington Avenue & 72nd Street

At the base of 24-unit luxury condo building

22' of frontage on 72nd Street

New Dedicated and ADA Compliant Entrance

SUBWAY ACCESS

2nd Avenue to 72nd Street | 6,537,279 Annual Riders 

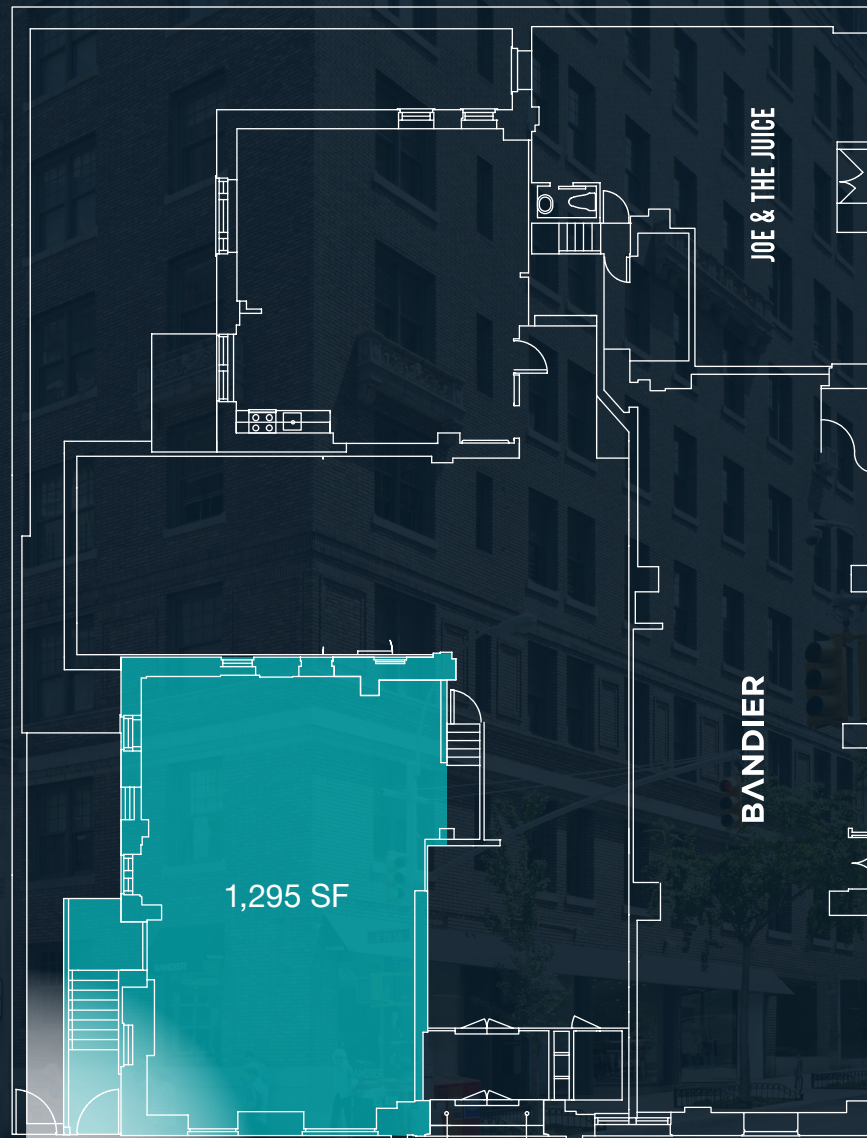
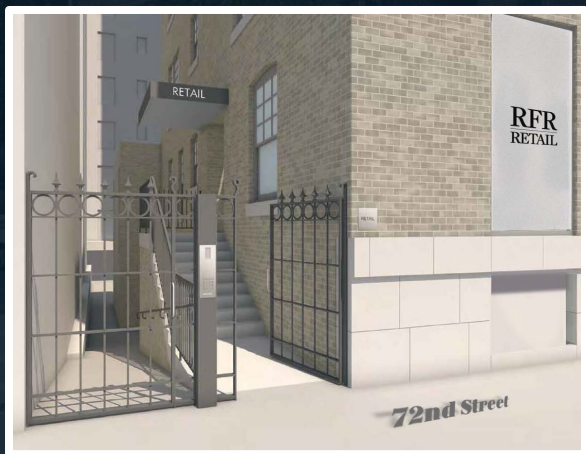
Lexington Avenue to 68th Street | 9,068,131 Annual Riders 

NEIGHBORING RETAILERS

Bandier | MZ Wallace | Anthropologie | Oren's Daily Roast
Joe & The Juice | Lee Anderson | Shen | L'Art De Vivre
Otte | French Sole | Cote'lac | Bella Blu Ristorante
Cognac East | Corrado Bread and Pastry | J. McLaughlin

FLOOR PLAN

GROUND FLOOR



▲ NEW DEDICATED ENTRANCE

LEXINGTON AVENUE

72ND STREET

THE NEIGHBORHOOD

150 EAST 72ND STREET



150 EAST 72ND STREET

Fritz Kemerling
212.687.2422
fritz@dartco.com

Peter Lyons
212.687.2432
plyons@dartco.com

Evan Clements
212.687.2431
eclements@dartco.com

RFR
RETAIL
rfrspace.com



270 Lafayette Street | Suite 806
New York, New York 10012
212.687.2400
dartco.com