

163

DUANE STREET

Tribeca
MANHATTAN

mona

163
DUANE
STREET



**FORMER RESTAURANT SPACE
WITH FRONTAGE ON
HUDSON & DUANE STREETS.**



BRANDON SINGER
brandon@retailbymona.com
516 808 6794

MICHAEL CODY
michael@retailbymona.com
513 374 8630

mona

FLOORPLANS

GROUND

4,007 SF

LOWER LEVEL

3,697 SF

FRONTAGE

53FT on Hudson Street

58FT on Duane Street

CEILING HEIGHT

Ground: Up to 13FT 7IN

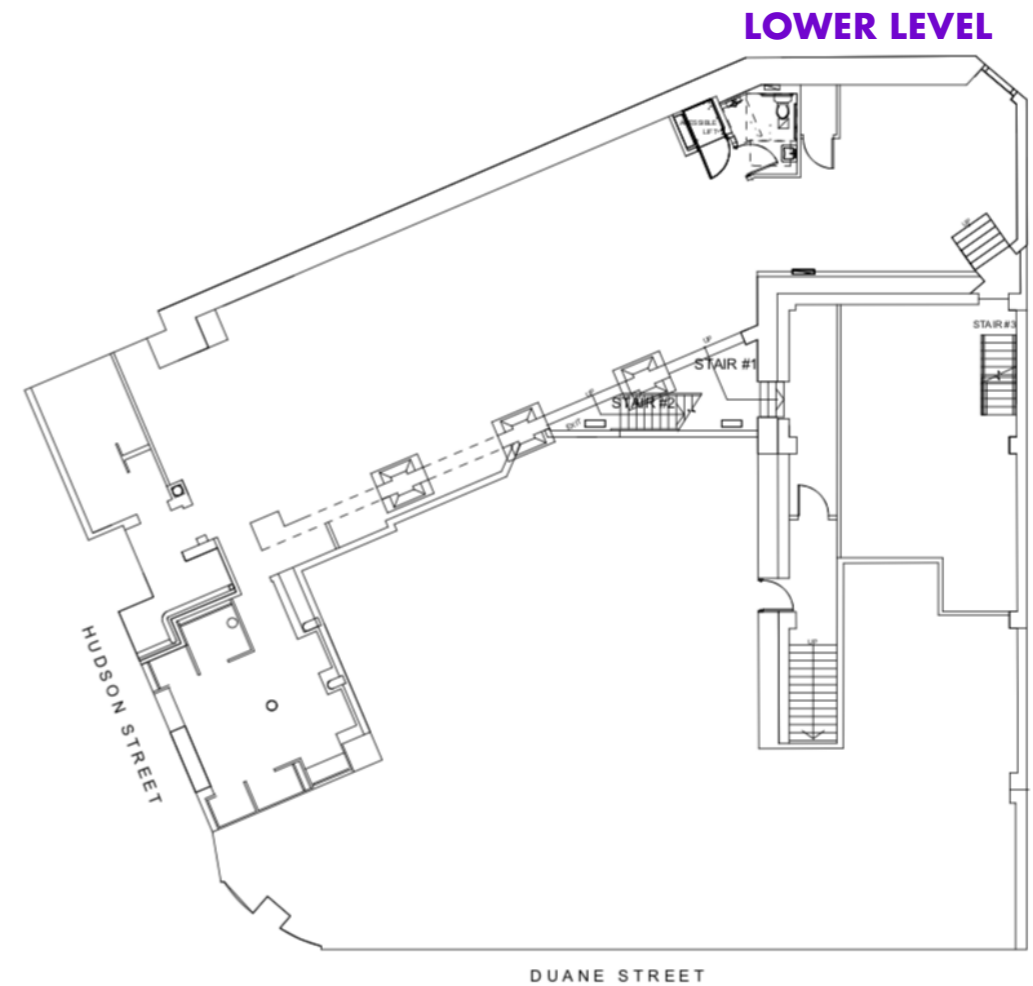
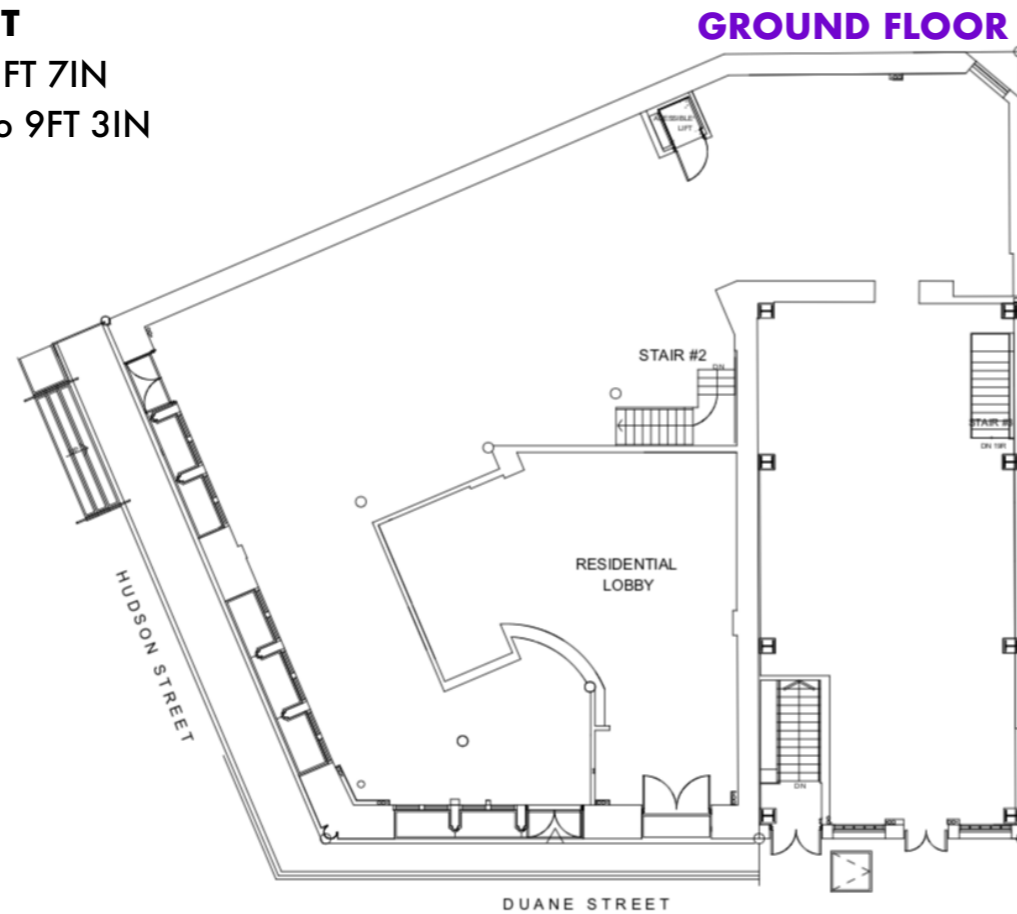
Lower Level: Up to 9FT 3IN

POSSESSION

Immediate

163

DUANE STREET



Not to scale. All dimensions and conditions are approximate and for information only.

BRANDON SINGER
brandon@retailbymona.com
516 808 6794

MICHAEL CODY
michael@retailbymona.com
513 374 8630

mona

HIGHLIGHTS

Distinctive corner retail space directly across the street from Duane Park.

Former restaurant.

Shaft for venting is in place.

Lower Level is selling space.

Open to potential division scenarios.

Entrances on both Hudson Street and Duane Street.

Close proximity to Citigroup's headquarters.



BRANDON SINGER
brandon@retailbymona.com
516 808 6794

MICHAEL CODY
michael@retailbymona.com
513 374 8630

mona

MAP

NEARBY PUBLIC TRANSIT

1 2 3 4 5 6
A C J R W Z

SELECT NEARBY RETAIL TENANTS

- J.Crew
- Starbucks
- Sarabeth's
- Sushi of Gari
- Heyday
- Sweetgreen
- Glowbar
- Nili Lotan
- Jacadi
- Bubby's
- Mr. Chow



BRANDON SINGER
brandon@retailbymona.com
516 808 6794

MICHAEL CODY
michael@retailbymona.com
513 374 8630

BRANDON SINGER
CEO + FOUNDER
brandon@retailbymona.com
516 808 6794

MICHAEL CODY
DIRECTOR + CO-FOUNDER
michael@retailbymona.com
513 374 8630

 @RETAILBYMONA

 RETAIL-BY-MONA

RETAILBYMONA.COM

text me
646 328 6267



mona