

# 163

DUANE STREET

Tribeca  
MANHATTAN

mona



**163**  
**DUANE**  
**STREET**



**FORMER RESTAURANT SPACE  
WITH FRONTAGE ON  
HUDSON & DUANE STREETS.**



BRANDON SINGER  
[brandon@retailbymona.com](mailto:brandon@retailbymona.com)  
516 808 6794

MICHAEL CODY  
[michael@retailbymona.com](mailto:michael@retailbymona.com)  
513 374 8630

OMAR ALY  
[omar@retailbymona.com](mailto:omar@retailbymona.com)  
347 281 3800

**mona**



# FLOORPLANS

## GROUND

4,007 SF

## LOWER LEVEL

3,697 SF

## FRONTAGE

53FT on Hudson Street

58FT on Duane Street

## CEILING HEIGHT

Ground: Up to 13FT 7IN

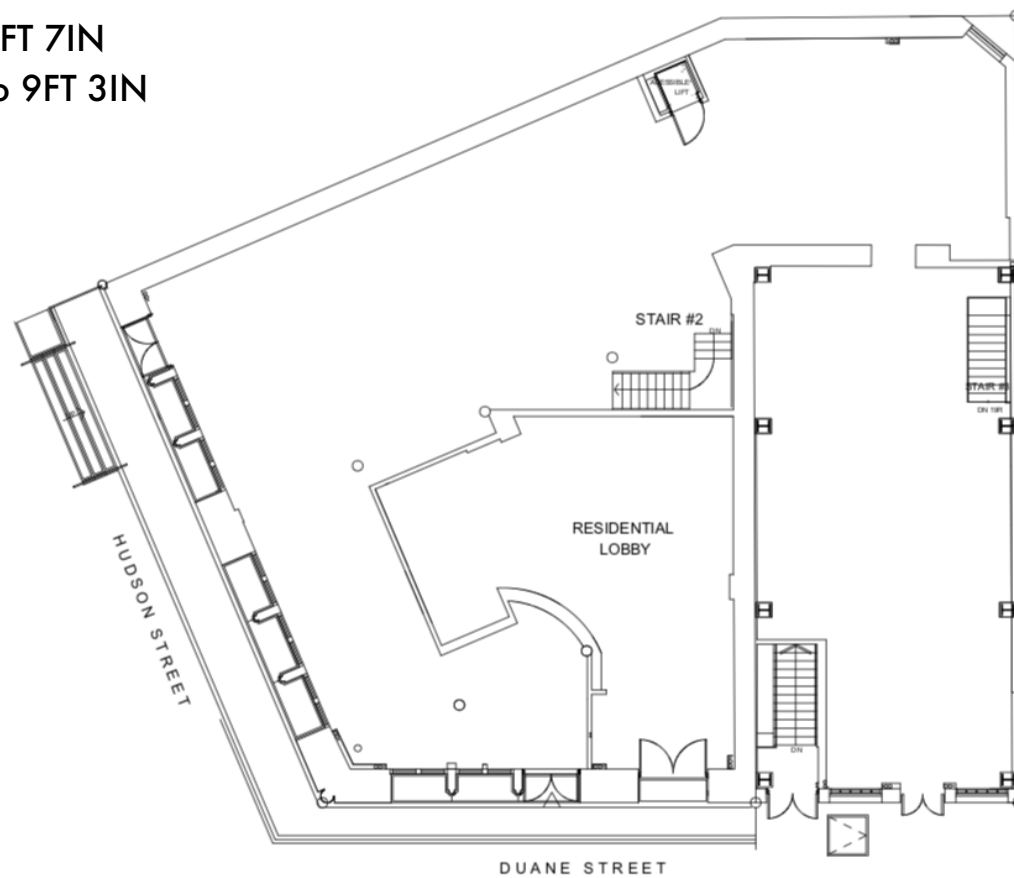
Lower Level: Up to 9FT 3IN

## POSSESSION

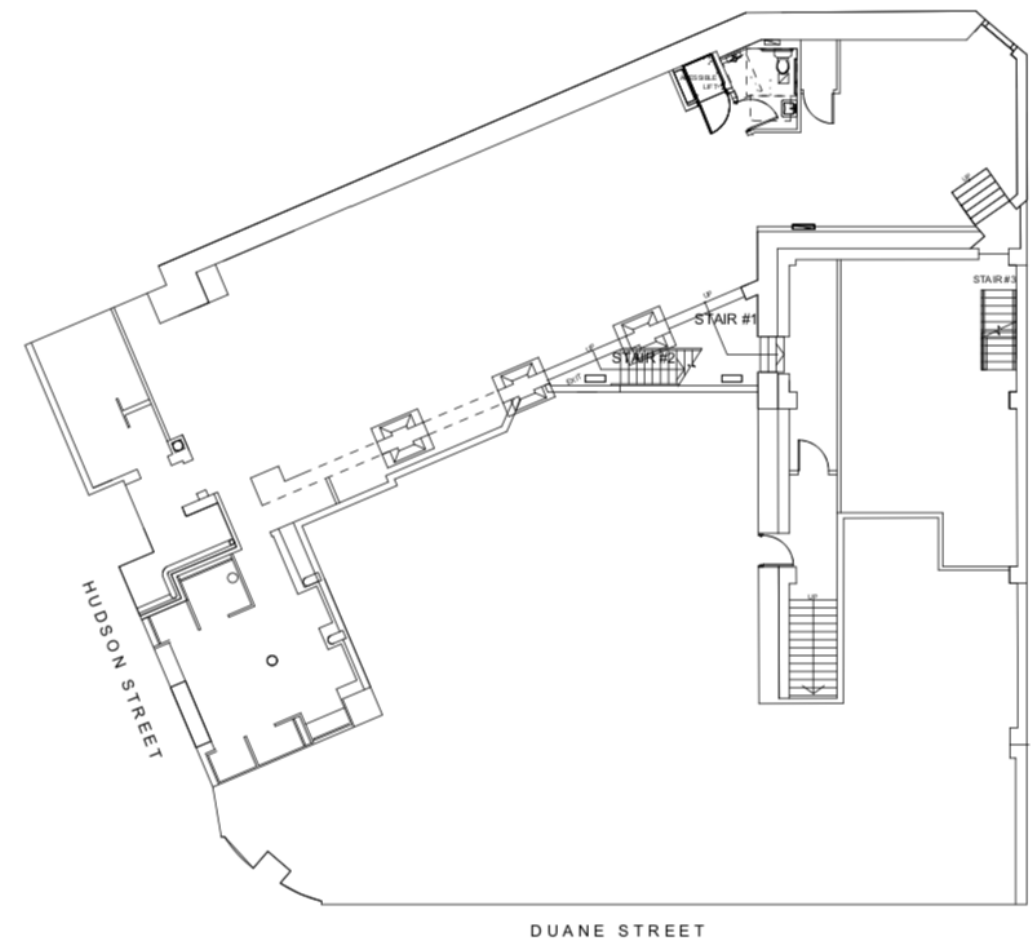
Immediate

**163**  
DUANE  
STREET

### GROUND FLOOR



### LOWER LEVEL



Not to scale. All dimensions and conditions are approximate and for information only.

BRANDON SINGER  
[brandon@retailbymona.com](mailto:brandon@retailbymona.com)  
516 808 6794

MICHAEL CODY  
[michael@retailbymona.com](mailto:michael@retailbymona.com)  
513 374 8630

OMAR ALY  
[omar@retailbymona.com](mailto:omar@retailbymona.com)  
347 281 3800

mona



# HIGHLIGHTS

Distinctive corner retail space directly across the street from Duane Park.

Former restaurant.

Shaft for venting is in place.

Lower Level is selling space.

Open to potential division scenarios.

Entrances on both Hudson Street and Duane Street.

Close proximity to Citigroup's headquarters.



BRANDON SINGER  
[brandon@retailbymona.com](mailto:brandon@retailbymona.com)  
516 808 6794

MICHAEL CODY  
[michael@retailbymona.com](mailto:michael@retailbymona.com)  
513 374 8630

OMAR ALY  
[omar@retailbymona.com](mailto:omar@retailbymona.com)  
347 281 3800

mona



# MAP

## NEARBY PUBLIC TRANSIT

**1 2 3 4 5 6  
A C J R W Z**

## SELECT NEARBY RETAIL TENANTS

- J.Crew**
- Starbucks**
- Sarabeth's**
- Sushi of Gari**
- Heyday**
- Sweetgreen**
- Glowbar**
- Nili Lotan**
- Jacadi**
- Bubby's**
- Mr. Chow**



BRANDON SINGER  
[brandon@retailbymona.com](mailto:brandon@retailbymona.com)  
 516 808 6794

MICHAEL CODY  
[michael@retailbymona.com](mailto:michael@retailbymona.com)  
 513 374 8630

OMAR ALY  
[omar@retailbymona.com](mailto:omar@retailbymona.com)  
 347 281 3800

**mona**

**BRANDON SINGER**

**CEO + FOUNDER**

brandon@retailbymona.com

516 808 6794

**MICHAEL CODY**

**DIRECTOR + CO-FOUNDER**

michael@retailbymona.com

513 374 8630

**OMAR ALY**

**ASSOCIATE**

omar@retailbymona.com

347 281 3800

 @RETAILBYMONA

 RETAIL-BY-MONA

RETAILBYMONA.COM



mona