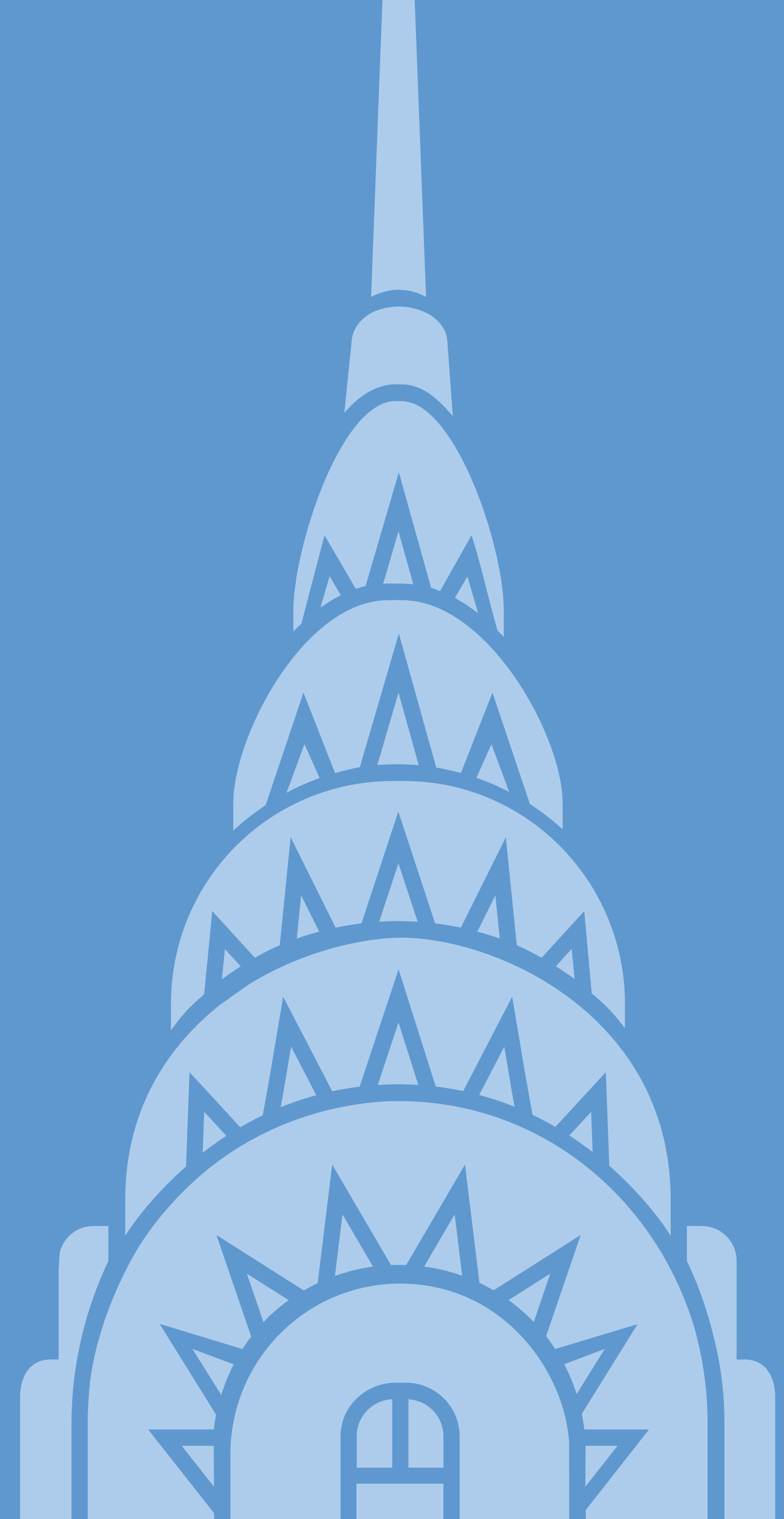


# CHRYSLER BUILDING

LEASING INFORMATION





REIMAGINING THE WORLD'S  
MOST LEGENDARY SKYSCRAPER

CONTENTS

MAGNIFICENT VIEWS

FLEXIBLE FLOOR PLATES

MODERN UPGRADES

THE CHRYSLER CLUB

STREET-LEVEL AMENITIES

THE ARCADE

THE CLOUD CLUB

The world's most legendary skyscraper boasts some of the most spectacular views in New York City. From its privileged Midtown East location at the intersection of Lexington Avenue and East 42nd Street, directly across from Grand Central Terminal, the Chrysler Building commands impressive vistas from the East River to the Hudson, from the Verrazano Bridge and New York Harbor to Central Park and beyond.

# MAGNIFICENT VIEWS

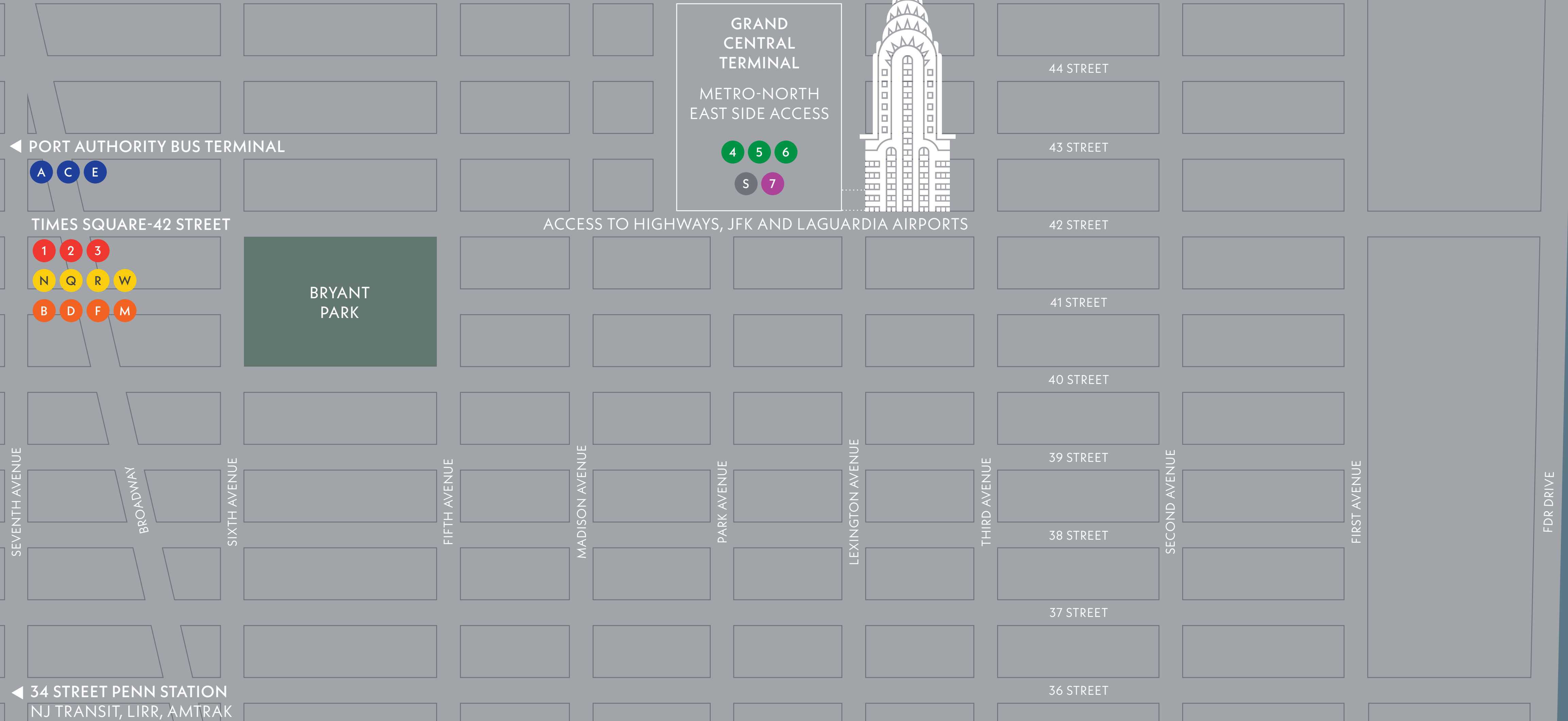


Views from tower floors  
looking north and east  
towards the East River.

Views from tower floors  
looking south towards  
Lower Manhattan.



The Chrysler Building's prime Midtown East location puts it within easy reach of a wealth of transportation options, including NJ transit, LIRR, and Amtrak.



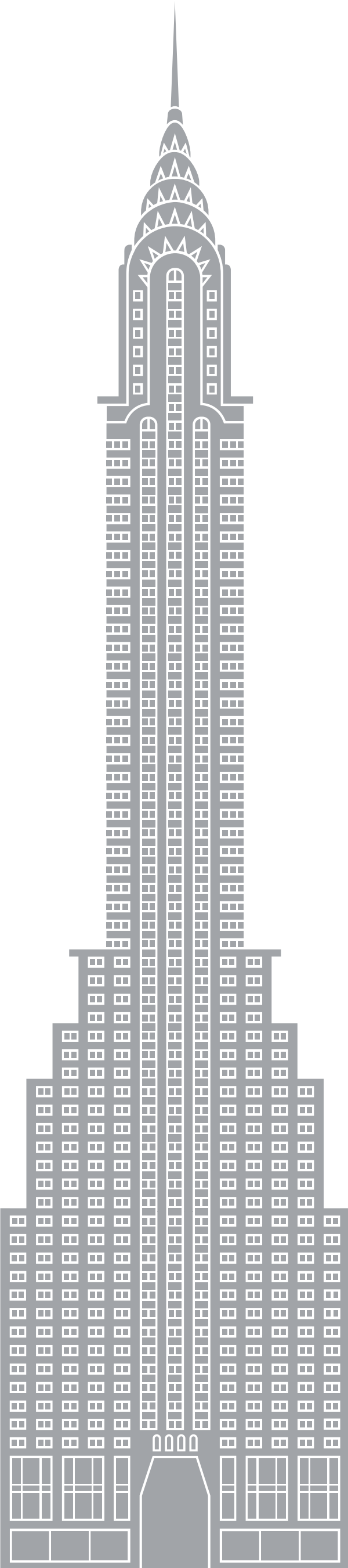
From large open workplaces to traditional office suites, the Chrysler Building offers a variety of flexible and functional floor plates. Low-rise floors have large footprints, while the upper tower levels offer an exclusive boutique feel—and the building's most spectacular views. Setbacks at multiple locations along the height of the tower offer opportunities for private terraces with outstanding views.

# FLEXIBLE FLOOR PLATES

**Floors 61 & 62**  
Cloud Club

**Floor 27**  
Chrysler Club

**Ground and Arcade Levels**  
Chrysler Marketplace and  
Foodhall, Shops, Diner,  
MTA, GCT Access



**Floors 68–71**  
3,700–5,800SF

**Floors 61–67**  
7,600SF

**Floors 58–59**  
9,600SF

**Floors 27–57**  
11,000SF

**Floors 24–26**  
19,000–20,600SF

**Floors 17–23**  
25,500SF

**Floors 5–16**  
37,600SF

**Floors 2–4**  
44,000SF



Generous floorplates allow flexible and efficient layouts of open workspaces.

Access to natural light makes for inviting, collaborative work areas and breakout spaces.







Terrace opportunities at the tower's setbacks offer private outdoor space for tenants.

Prebuilt suites include pantries and kitchen spaces with natural light and views.



Master architect Gensler implemented building-wide improvements that include all-new windows and efficient new mechanical systems. In addition to a refreshed elevator lobby, adding brighter lighting and bold new signage, Gensler also designed brand-new restrooms, hallways, glass entry doors, and common corridor upgrades that will bring the Chrysler Building into the most current workplace standards with contemporary style and functionality.

# MODERN UPGRADES





Renovated elevator lobbies incorporate original Art Deco elevator doors within Gensler's contemporary new design.

All-new bathrooms feature clean, modern style.



Designed exclusively for tenants, the Chrysler Club—on the 27th floor amenity level—combines stylish work and leisure spaces with contemporary design. The full-floor club includes a boardroom, conferencing center, library and lounge, yoga and meditation room, open pantry with collaborative breakout seating, and a recreation area—all overlooking a landscaped outdoor terrace at the tower's setback.

# THE CHRYSLER CLUB





The living room offers rec room-style amenities including games tables and billiards, as well as private phone rooms and co-working seating.

The club's exclusive offerings include a dedicated yoga and meditation studio.





The Pantry offers a casual, café-style environment for working, socializing with colleagues, or enjoying a morning or afternoon coffee break.



Tenants can reserve the club's board room for large meetings.

Conferencing spaces include a town hall-style meeting space and break-out area.



Architect David Rockwell of Rockwell Group, designer of New York's most memorable restaurants and bars, will bring new life to the Chrysler Building's ground-floor storefronts. Along Lexington Avenue, a restaurant with coffee service during the morning rush and a bar to unwind after work will reimagine old New York traditions. A café and bar along 42nd street will offer destination dining in fashionable surroundings.

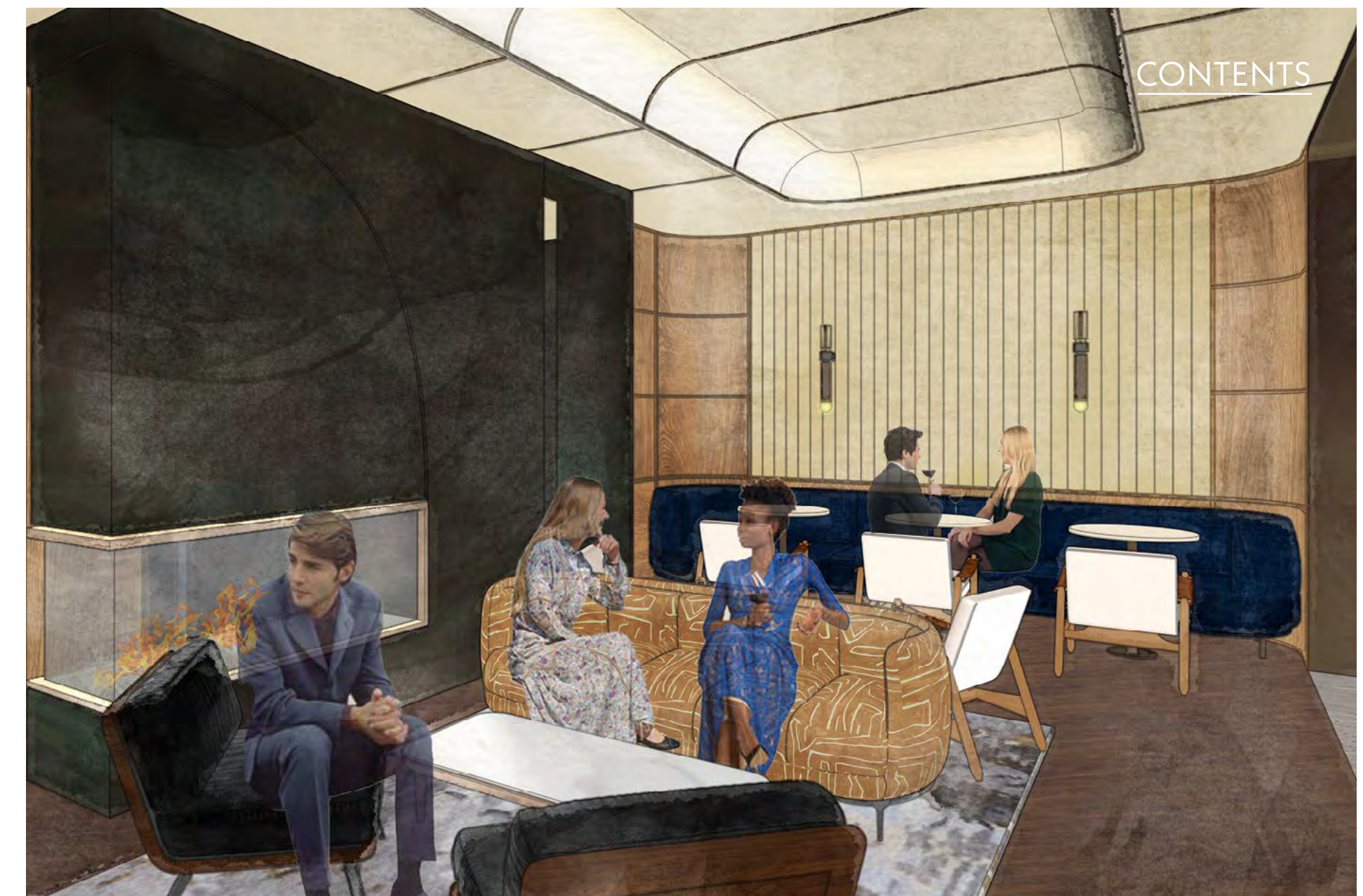
# STREET-LEVEL AMENITIES





The Counter's stylish lounge offers an elegant spot for after-work cocktails and light bites.

Featuring large windowed expanses overlooking Lexington Avenue, The Counter's centerpiece bar will offer coffee service in the morning and cocktails in the evening.





The café and bar will feature a grab-and-go coffee counter with its own seating area overlooking 42nd Street.

The Arcade, located one level below the lobby and linked directly to Grand Central Terminal and MTA subways, offers a wealth of lifestyle-focused services and amenities you never have to step outside to enjoy. Completely reimagined by celebrated architect David Rockwell of Rockwell Group, the Arcade's exciting new retail, food, and personal care and wellness venues include an American-themed diner and a café/bar, wine store and flower shop, a Marketplace and Food Hall, concierge services, and much more.

# THE ARCADE





The Marketplace will feature a variety of vendors with an emphasis on local and regional purveyors.

The Food Hall will boast a variety of food outlets and dining areas in a lively space inspired by the architecture of classic New York.





The reimagined Arcade will offer a variety of lifestyle-driven shops and services. Additional retail venues will be curated to provide convenient access to daily desires.



Inspired by the building's Art Deco architecture, the Diner will feature a contemporary take on classic Americana.

The Arcade's retail venues, including a boutique wine shop, are envisioned with an eye towards everyday convenience.





The Arcade's blow dry bar is ideal for a quick, convenient blowout without having to leave the building.

An on-site barbershop will offer the gentlemen of the Chrysler Building the perfect spot for a haircut or a proper shave.





A dry cleaner and tailor, offering building tenants convenient laundry drop-off and pick-up as well as alterations, will likely be one of its most popular services.

A classic in-house shoeshine service will be a welcome addition to the Chrysler Building's reimagined Arcade.





The legendary Cloud Club, where captains of industry once sipped champagne with Hollywood stars, is being reborn on the tower's 61st and 62nd floors. Completely reimaged by acclaimed tastemaker and AD100 designer Ken Fulk, the new Cloud Club will feature an elegant, contemporary take on the Chrysler Building's opulent Art Deco style. The bi-level venue, open to the public, will offer daily lunch service, evening cocktails, private dining and conferencing and catered event spaces, all with dazzling views of the skyline and beyond. The North and South Eagle Terraces offer an intimate view of the spectacular and iconic eagle sculptures adorning the building.

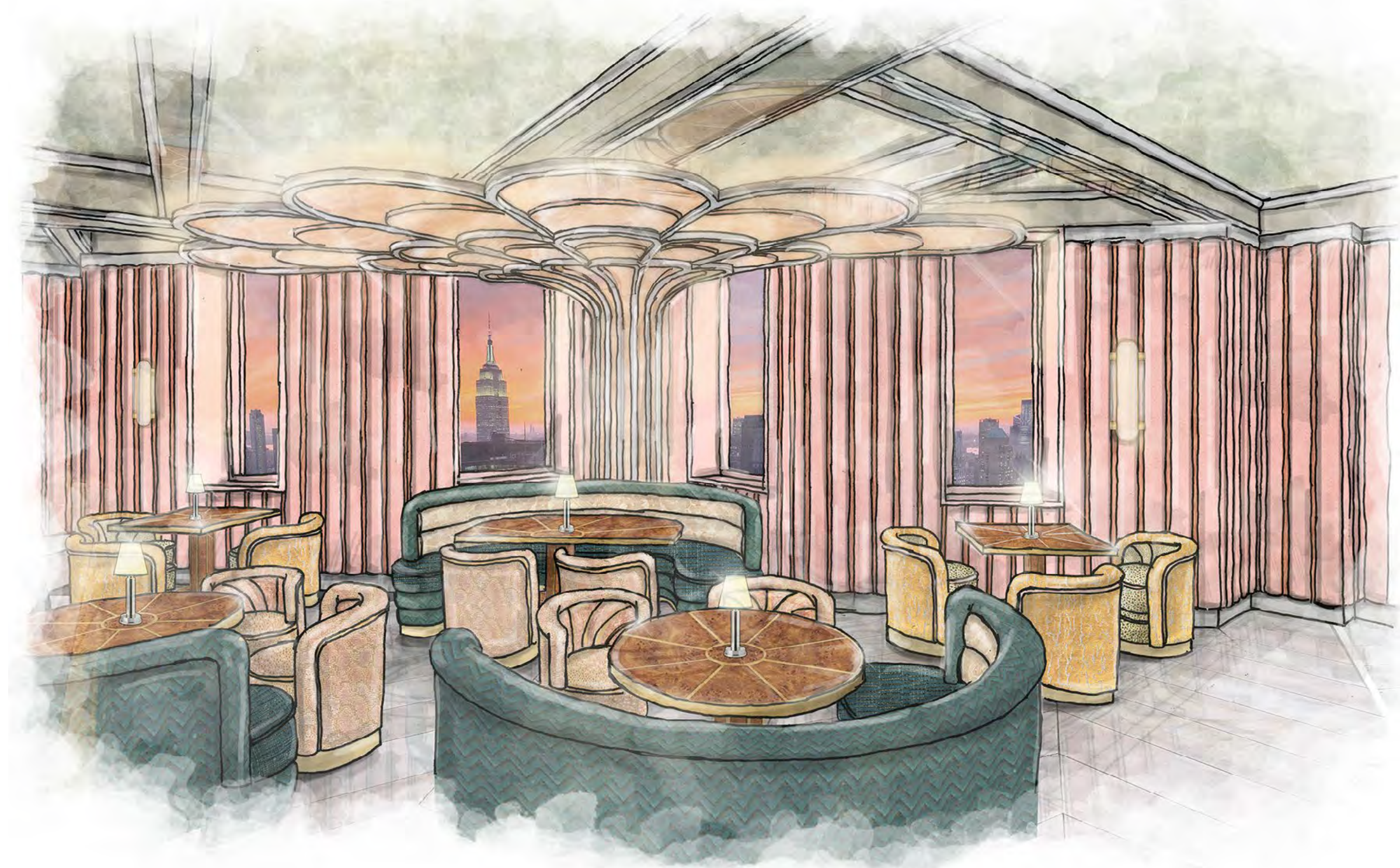
# THE CLOUD CLUB





The centerpiece of the reimagined Cloud Club is a glamorous bar inspired by Art Deco cocktail culture.

The Cloud Club offers lunchtime dining and evening cocktails with exceptional views.



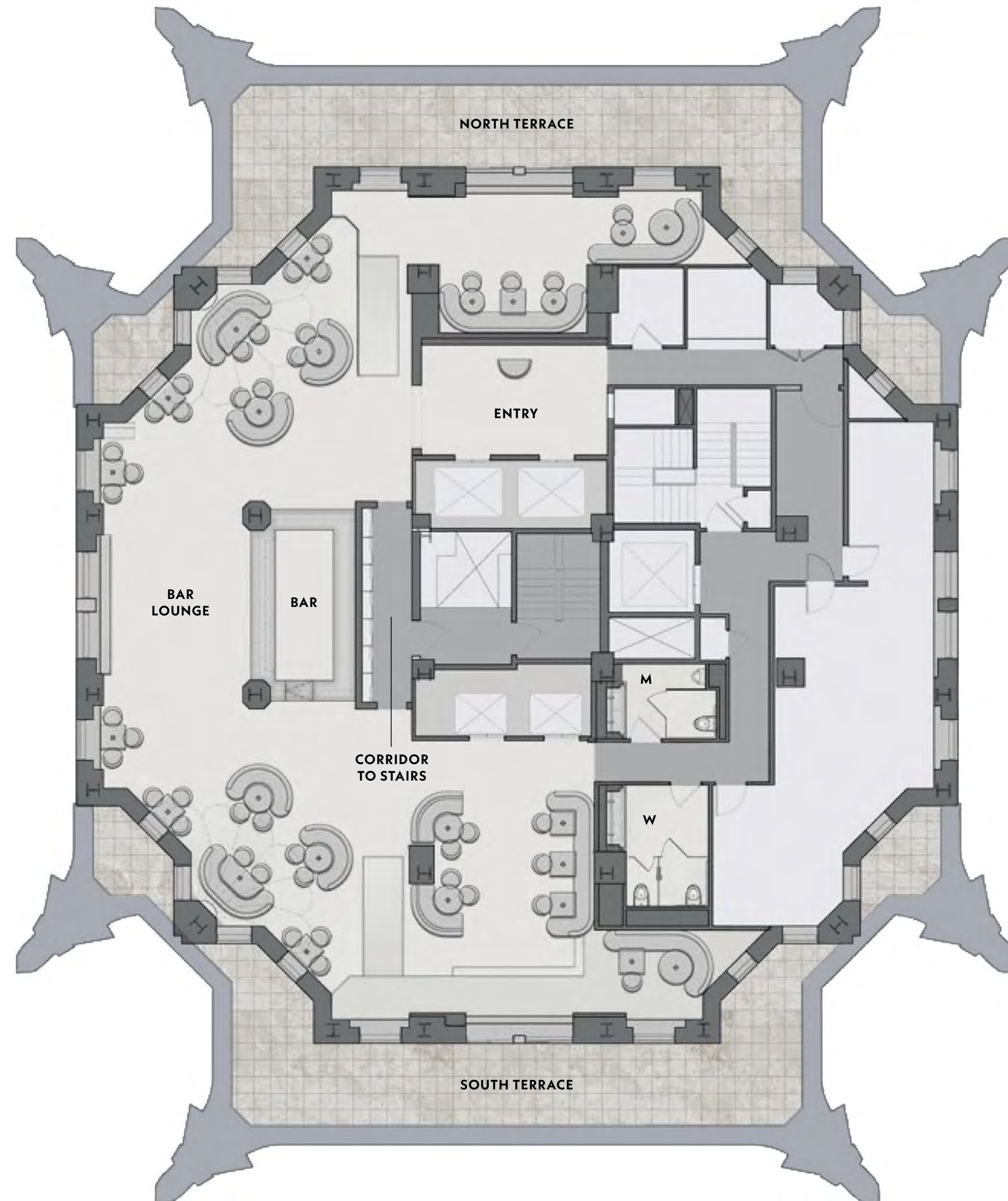


The reimagined Cloud Club celebrates classic cocktail culture surrounded by magnificent views.

AD100 designer Ken Fulk's vision for the rechristened Cloud Club incorporates elegant details with Art Deco flourishes.



The exclusive club features a glamorous bar and multiple lounge and dining areas on the tower's 61st floor, with event space on the 62nd floor. Guests enjoy access to the North and South Eagle Terraces, featuring the famous eagle gargoyles that adorn the tower.



FOR LEASING OPPORTUNITIES

AJ CAMHI  
212.308.0700  
acamhi@rfr.com

PAUL MILUNEC  
212.223.1712  
pmilunec@rfr.com

ROB WELLER  
646.277.9254  
rweller@rfr.com

CHRYSLERBUILDING.COM

RFR  
 SIGNA