

THE RESERVE

301 BATTERY STREET



RFR



Newmark
Knight Frank

Contents

04	Opportunity
05	Stacking Plan
06	Floorplans
10	Renderings
20	Photos
24	Historical
26	Ownership
28	Transportation
30	Neighborhood



Opportunity

Introducing The Reserve, an unparalleled creative big block opportunity of +/- 105,000 RSF. Steeped in San Francisco history, this building offers one of a kind architectural details, soaring ceiling heights, exposed brick, concrete and steel throughout, and the potential for an exclusive lobby for a big block user.

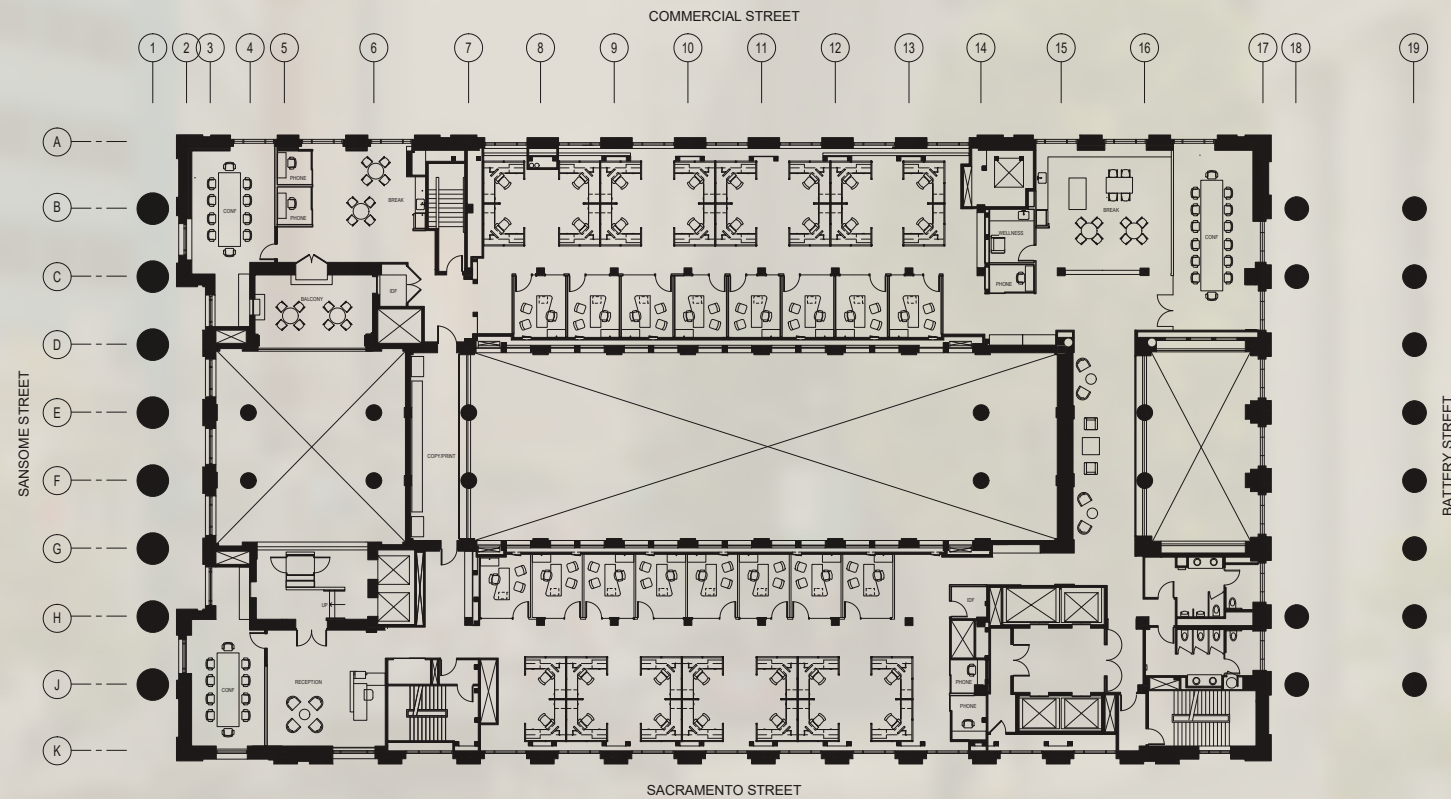
ENTIRE 3RD FLOOR	27,107 RSF	AVAILABLE 5/2021
PARTIAL 2ND FLOOR	19,659 RSF	AVAILABLE NOW
ENTIRE 1ST FLOOR	19,094 RSF	AVAILABLE NOW
ENTIRE GROUND	24,066 RSF	AVAILABLE NOW
LOWER LEVEL	16,049 RSF	AVAILABLE NOW



Stacking Plan

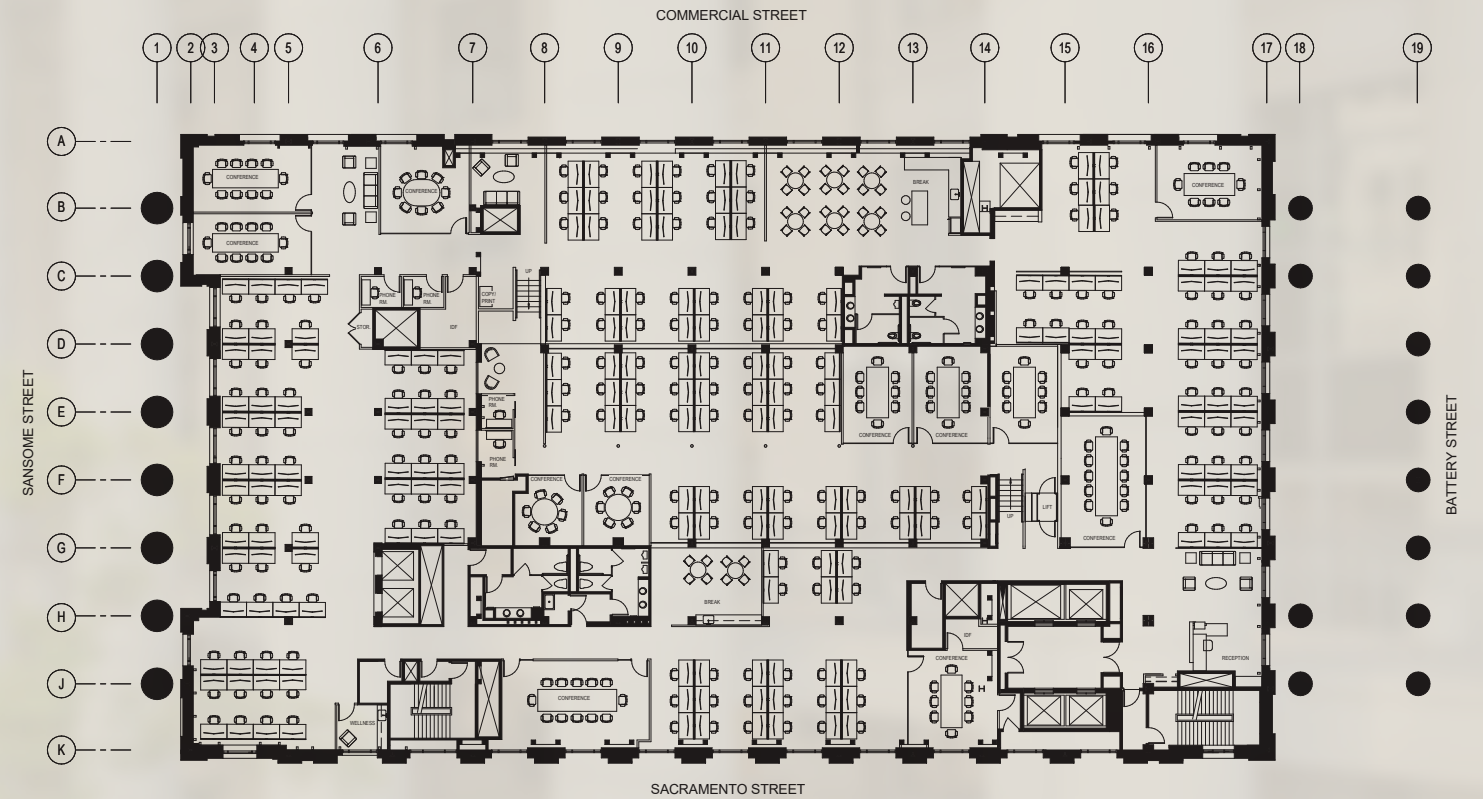
1st Floor Test Fit

- 16** Private Offices
- 30** Work Stations
- 3** Conference Rooms
- 6** Phone Rooms
- 2** Data Closets
- 1** Wellness Room

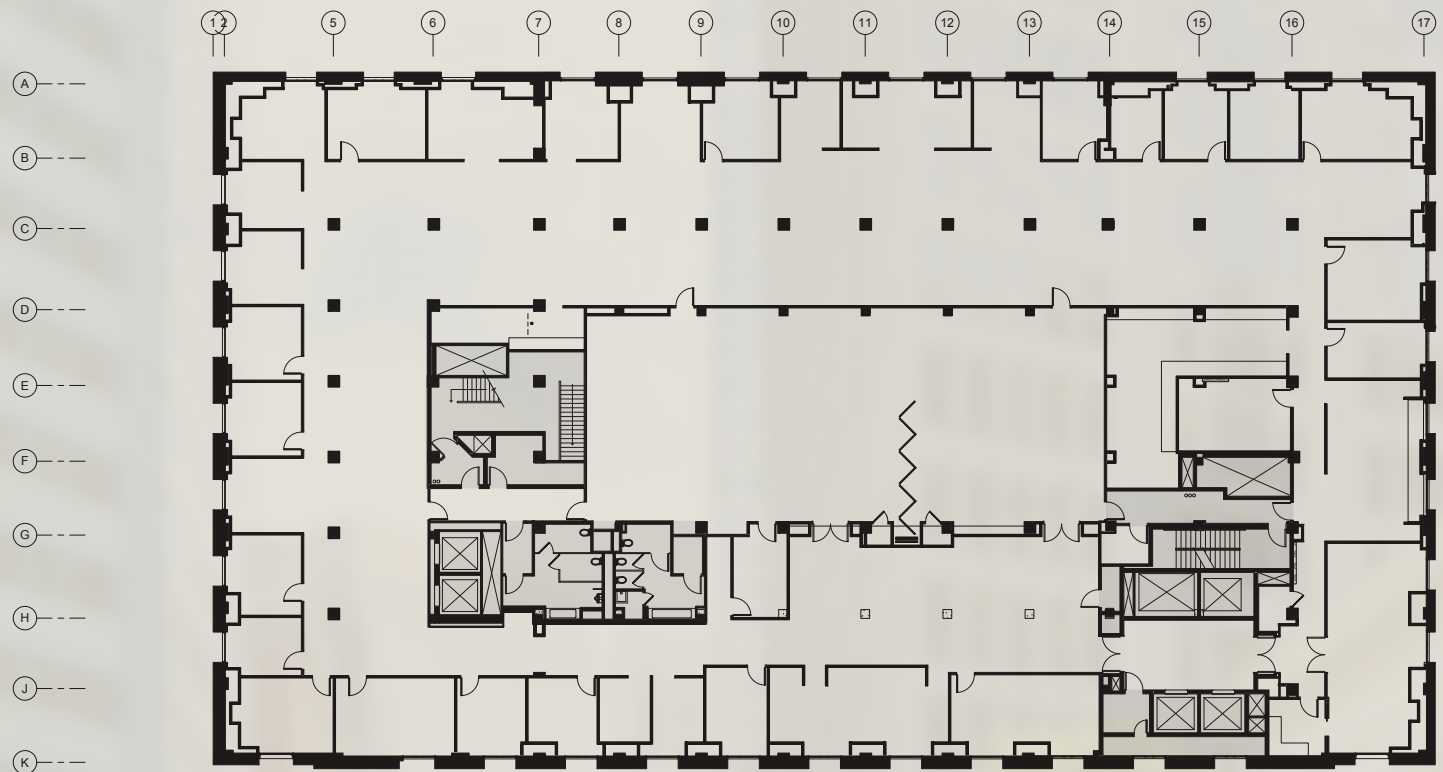


2nd Floor Test Fit

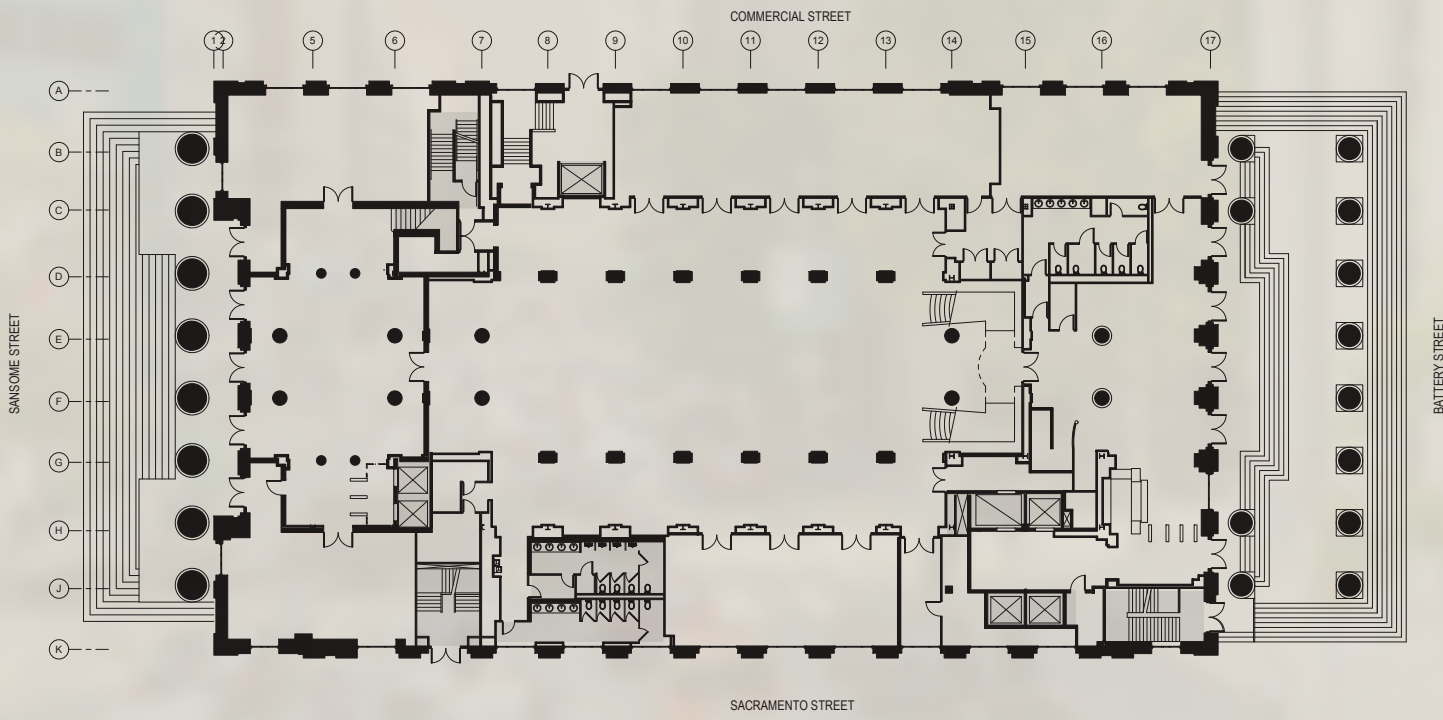
- 207** Work Stations
- 12** Conference Rooms
- 4** Phone Rooms
- 2** Data Closets
- 1** Wellness Room



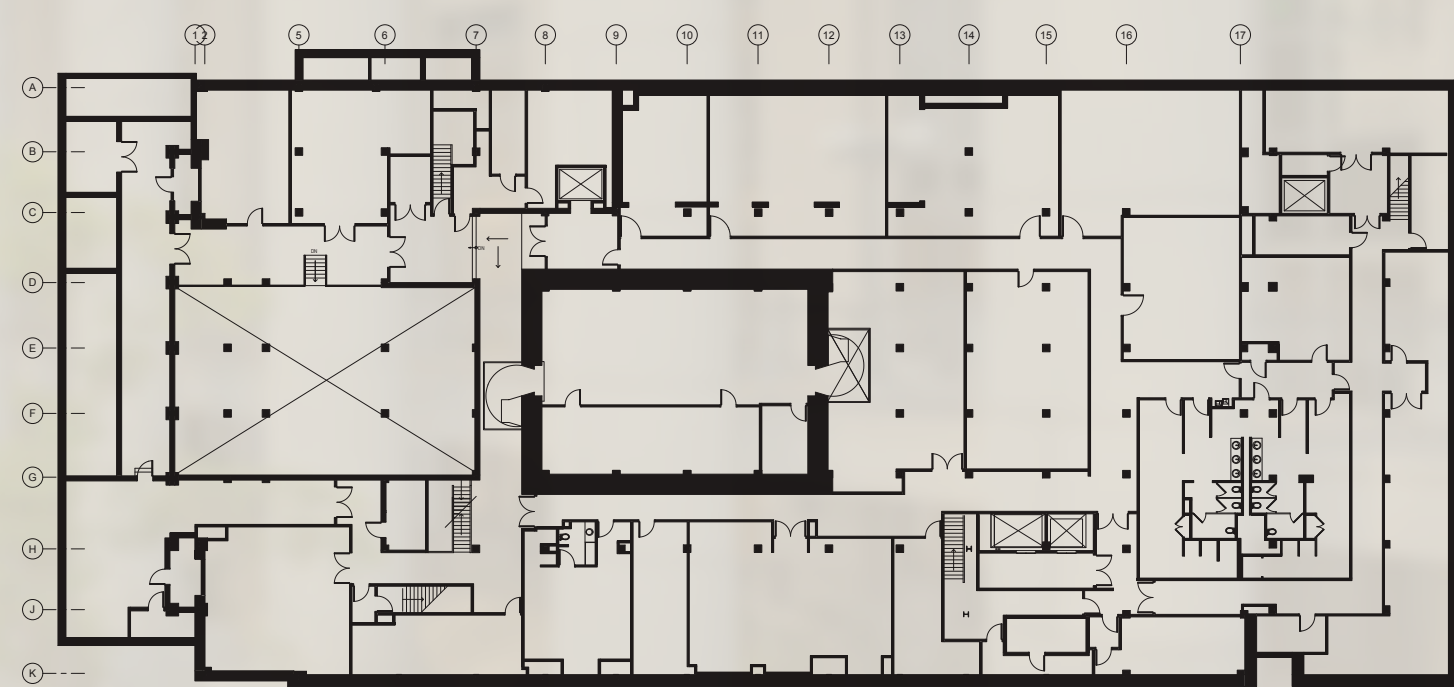
3rd Floor As-Built



Ground As-Built



Lower Level As-Built



1st Floor Rendering



2nd Floor Rendering



2nd Floor Rendering



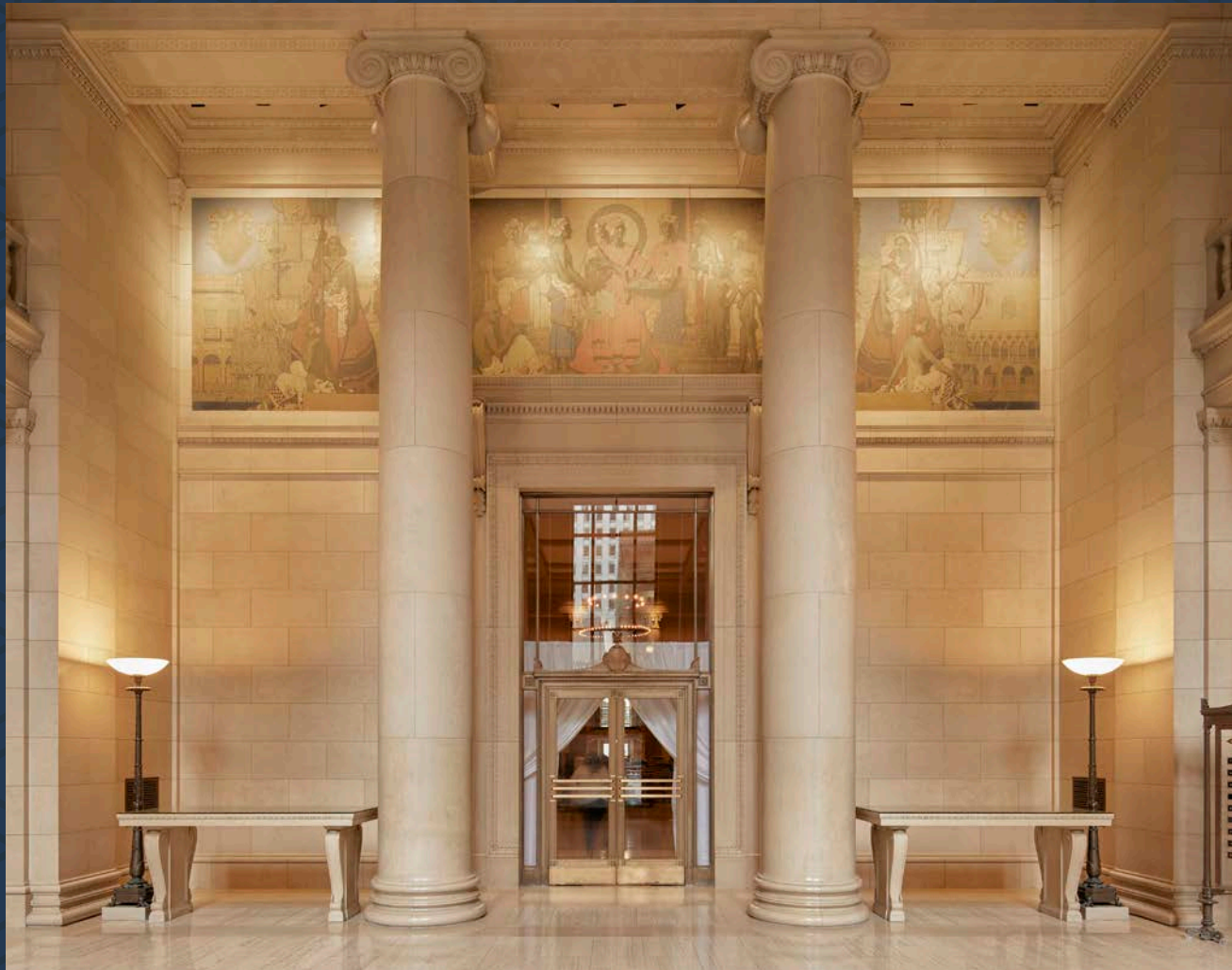
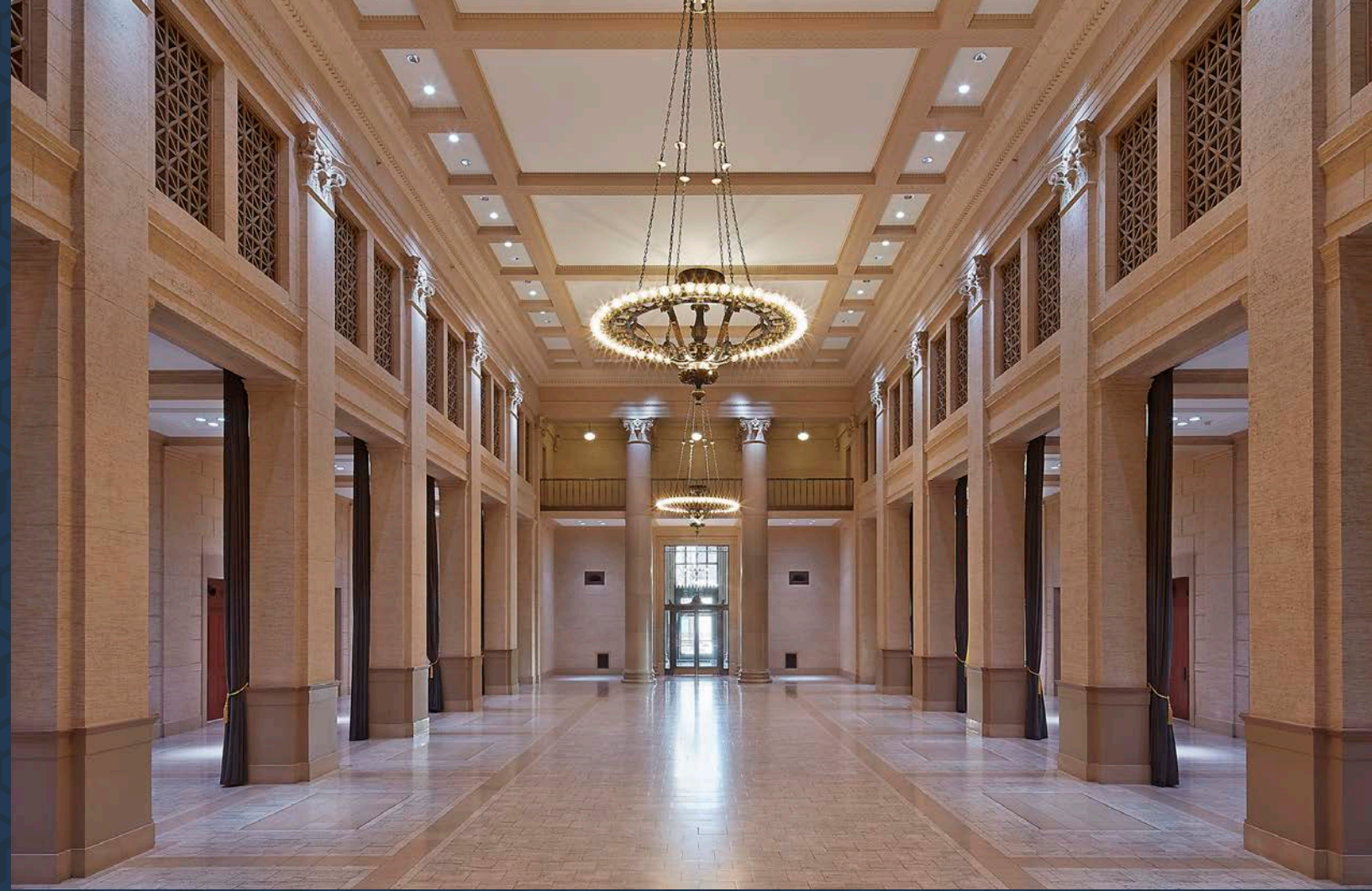
2nd Floor Rendering

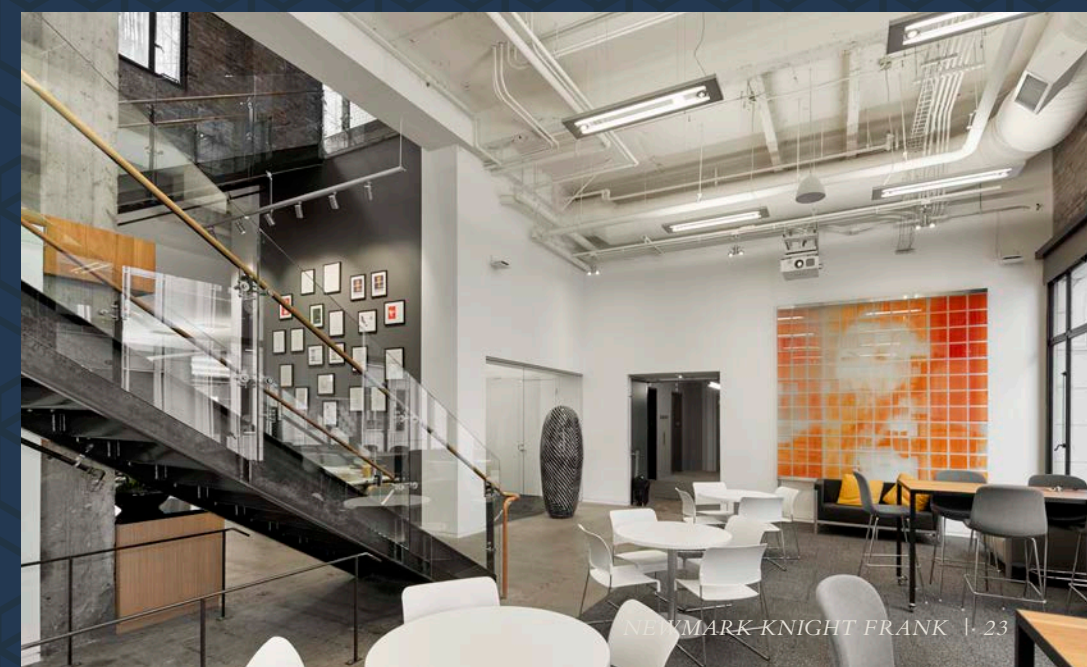
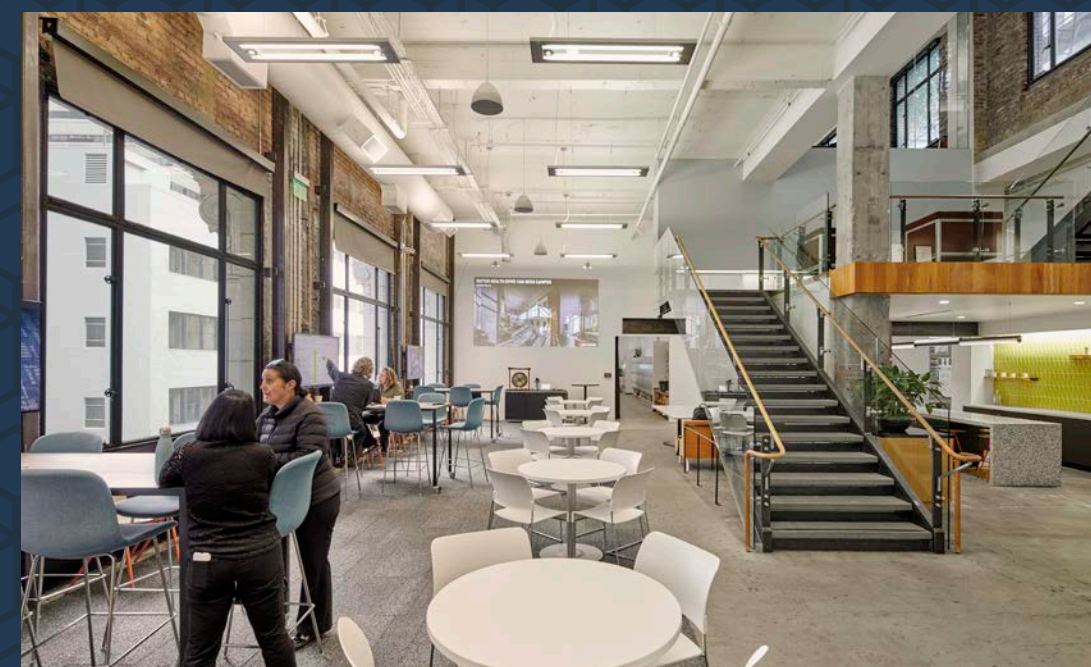
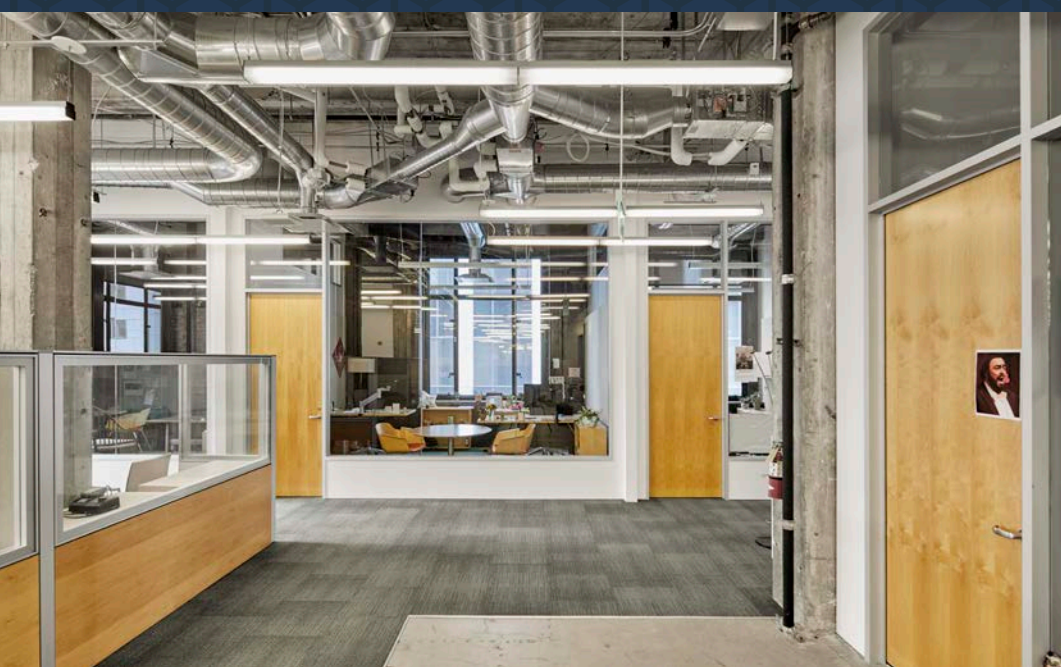
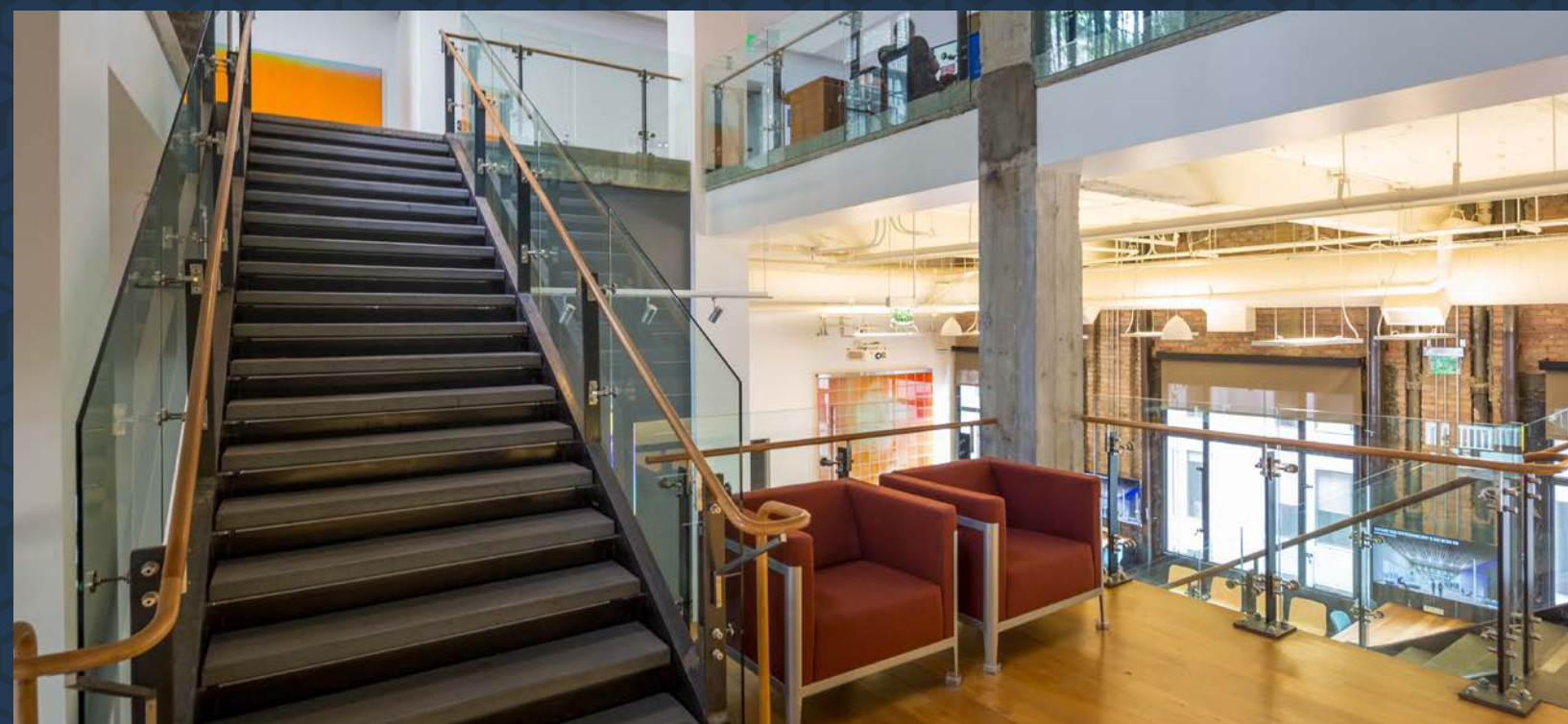


3rd Floor Rendering



Photos





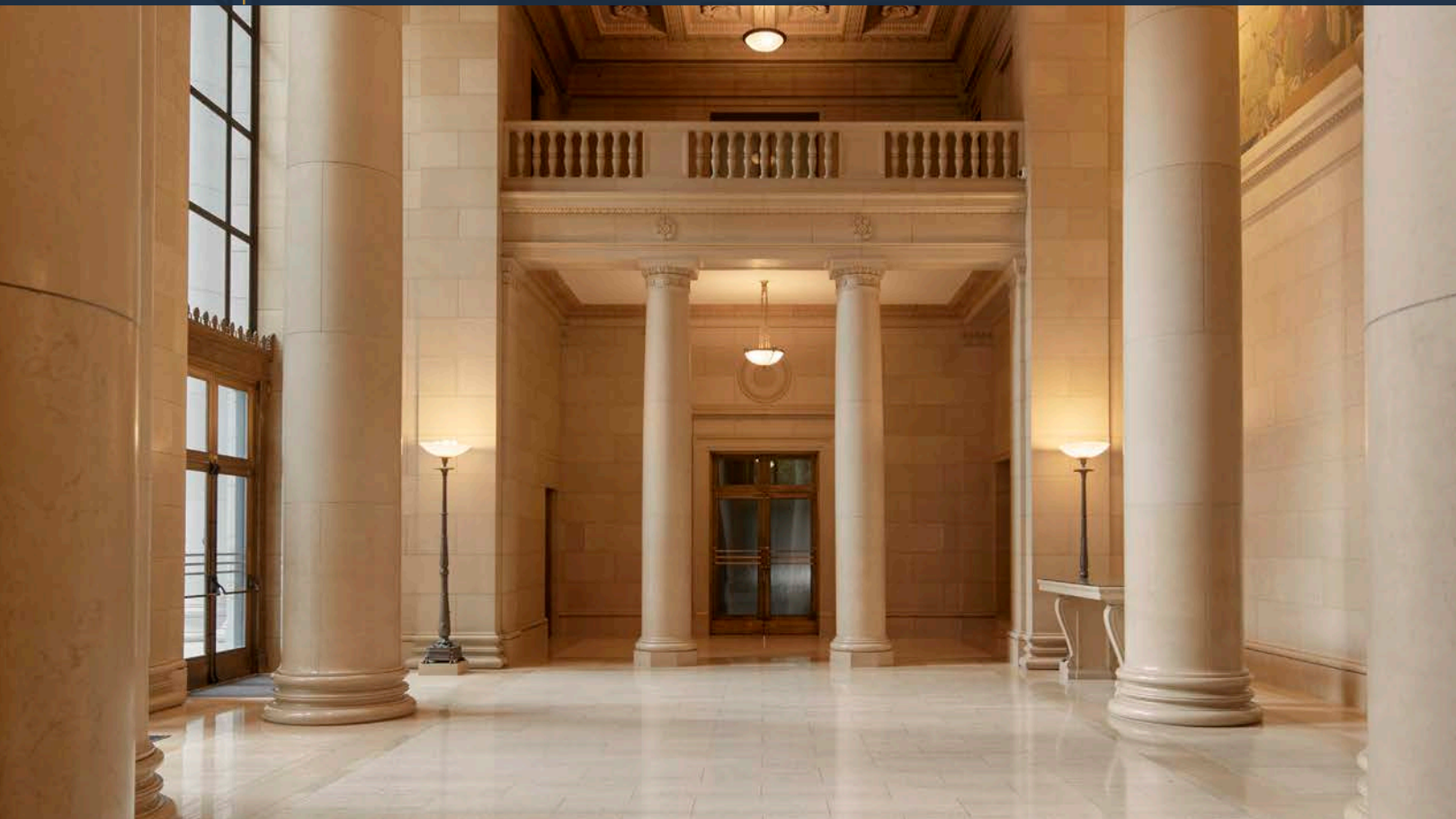
Historical

“

Completed in 1924, the former Federal Reserve Bank Building, designed by George W. Kelham sits in the heart of the San Francisco Financial District. The building's classical Beaux-Arts colonnades combined with the second story's 1920s Moderne style highlight the architectural duality of this historic landmark. From 1926 to 1983, the building served as a major branch of the U.S. Federal Reserve Bank. In 1983, the Federal Reserve relocated, and the space sold to private investors. Today, the Reserve stands as one of San Francisco's most unique and storied properties with some of the city's most spectacular event and office spaces.

”

-THE ARCHIVE



Ownership

RFR is a privately held real estate investment, development and management company with a focus on select properties in the United States and Germany. Founded in 1991 by Aby Rosen and Michael Fuchs, RFR has built a world-class portfolio of over 100 commercial, residential, hotel and retail properties comprising 10 million square feet in the United States and 10 million square feet in Germany under ownership. Core markets in the United States include New York, Seattle, California, and Miami.

RFR's select portfolio includes trophy assets consisting of the Chrysler Building, Seagram Building, 17 State Street, Gramercy Park Hotel and Paramount Hotel in New York as well as W South Beach in Miami.

CHRYSLER BUILDING



SEAGRAM BUILDING



17 STATE STREET



Transportation & Amenities

BART 301 Battery Street is less than a 8-minute walk from Embarcadero and Montgomery Street Stations. The BART system is the major public commuter transportation system in the Bay Area. BART consists of a high-speed rail system connecting most major municipalities with 43 stations in four Bay Area counties.

MUNI services 46.7 square miles in San Francisco and is the seventh largest public transit system in the United States by ridership. MUNI light rail can be accessed via a six-minute walk from 301 Battery Street to Embarcadero Station.

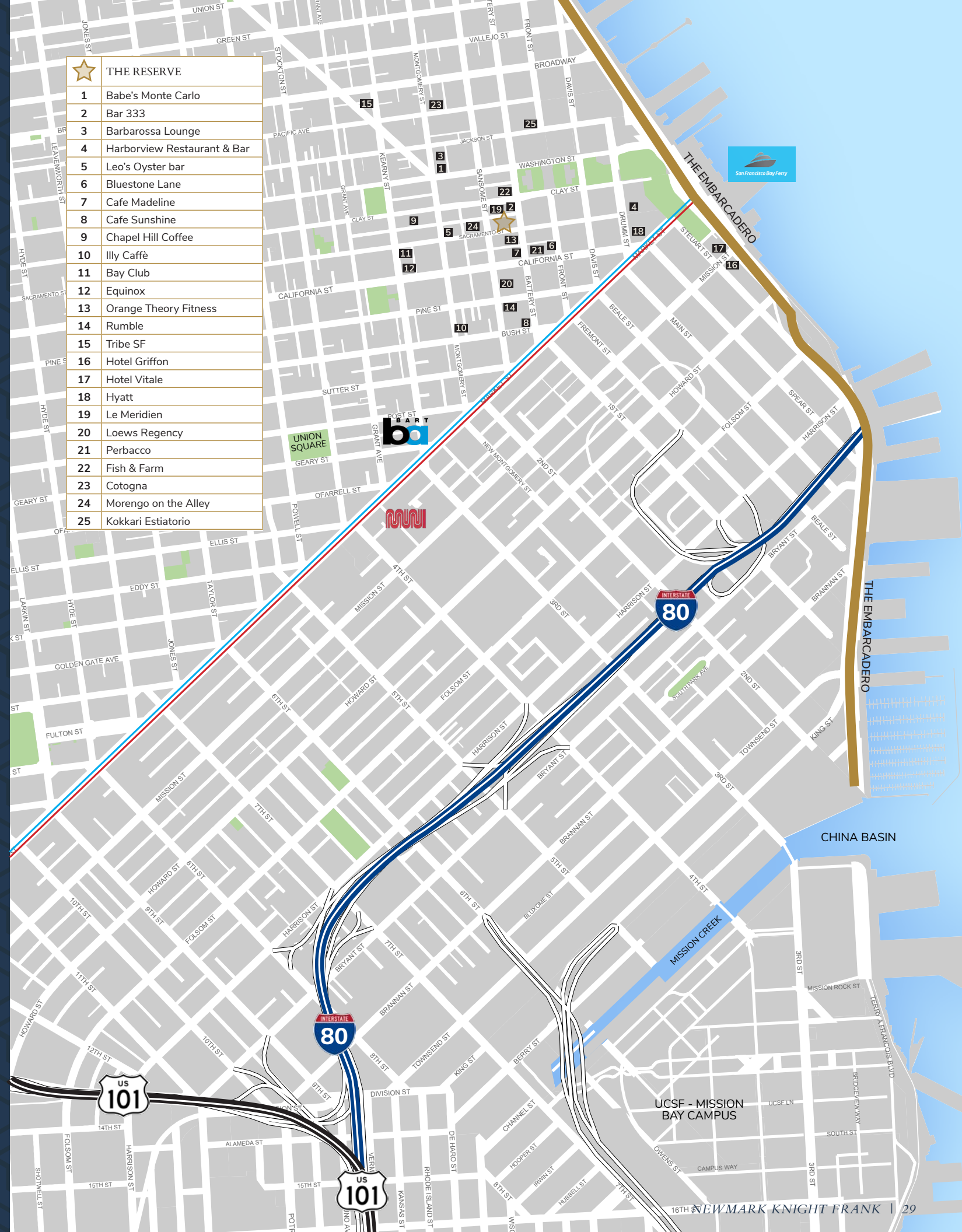
GOLDEN GATE TRANSIT provides regional bus service in San Francisco, Marin and Sonoma counties. In 2016, over 9 million passengers rode on the transit system. More than 15 routes from nearly every city in Marin County stop at the corner of Battery and Jackson Streets, less than one block from the property.

SAN FRANCISCO BAY FERRY serves cities throughout the Bay Area with eight terminals across San Francisco, Alameda, Oakland, South San Francisco, and Vallejo. The Bay Ferry has experienced a tremendous surge in ridership and now boasts more than 2 million riders annually. The Ferry Building, San Francisco's main ferry terminal, is a nine-minute walk from 301 Battery Street.

HIGHWAY 101 located a mile to the west, US 101 provides access north through Marin and south through the Peninsula.

INTERSTATE 80 located less than a mile south, Interstate 80 provides access to the East Bay via the Bay Bridge.

■ = BART ■ = MUNI



Neighborhood

BARS



Babe's Monte Carlo



Bar 333



Barbarossa Lounge



Harborview Restaurant & Bar



Leo's Oyster Bar

COFFEE SHOPS



Bluestone Lane



Cafe Madeline



Sunshine Cafe



Chapel Hill Coffee



Illy Caffè

FITNESS



Bay Club



Equinox



Orange Theory Fitness



Rumble



Tribe SF

HOTELS



Hotel Griffon



Hotel Vitale



Hyatt



Le Meridien



Loews Regency

RESTAURANTS



Perbacco



Fish & Farm



Cotogna



Morengo on the Alley



Kokkari Estiatorio

THE RESERVE

301 BATTERY STREET

CHARLIE WITHERS

Executive Managing Director
415.445.5191
charlie.withers@ngkf.com
CA RE LIC #01414522

ROMAN ADLER

Executive Managing Director
415.274.4434
radler@ngkf.com
CA RE LIC #01520766

HANNAH POTTER

Managing Director
415.445.5113
hpotter@ngkf.com
CA RE LIC #01924485

RFR



**Newmark
Knight Frank**

One Bush Street, Suite 1500, San Francisco, CA 94104

The distributor of this communication is performing acts for which a real estate license is required. The information contained herein has been obtained from sources deemed reliable but has not been verified and no guarantee, warranty or representation, either express or implied, is made with respect to such information. Terms of sale or lease and availability are subject to change or withdrawal without notice.