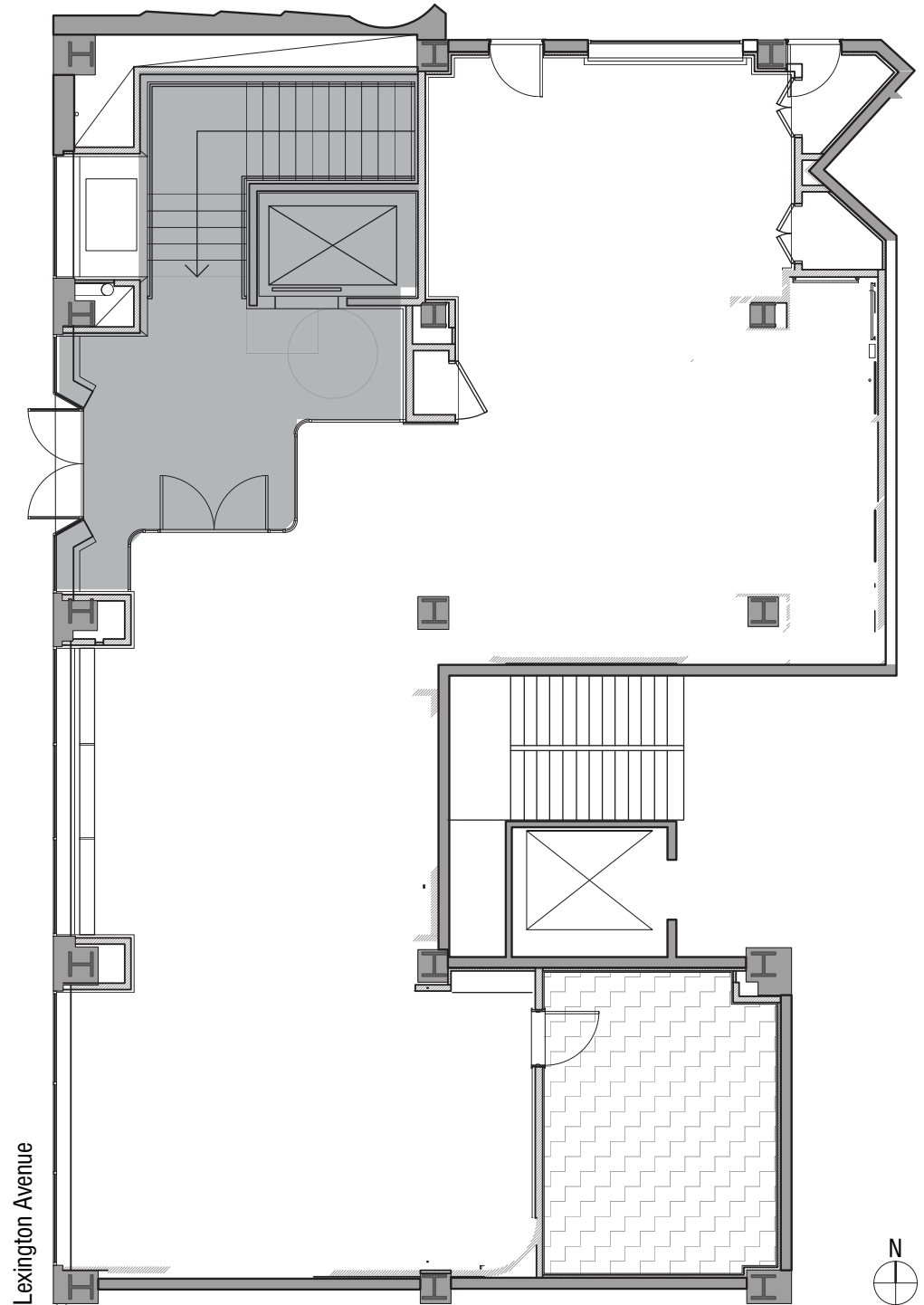


SPACE D – 2,277 SF

Core + Shell

- 97' Frontage on Lexington Avenue
- Floor to Slab 13' 8"



East 43rd Street

Lexington Avenue



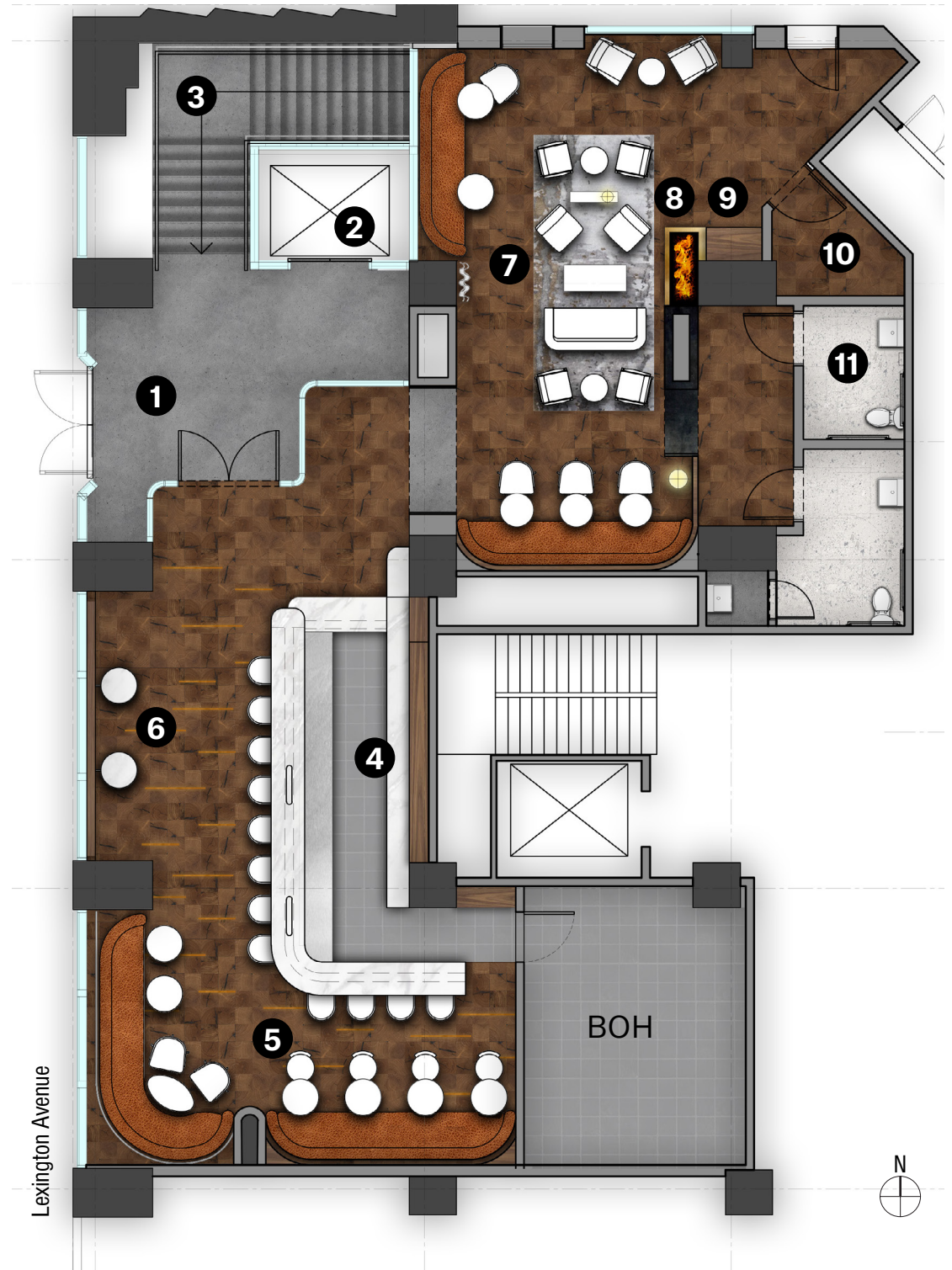
East 42nd Street

SPACE D – 2,277 SF

Counter Test Fit

- ① *Vestibule
- ② *Elevator to Arcade Level
- ③ *Stairs to Arcade Level
- ④ Feature Bar
- ⑤ Banquette Seating
- ⑥ Stand Up Window Tables
- ⑦ Lounge Seating
- ⑧ Fireplace
- ⑨ Pantry / Wait Station
- ⑩ Storage
- ⑪ Restrooms

*Can be included in Space D



East 43rd Street

Lexington Avenue



East 42nd Street



COUNTER

Rendered Perspectives

