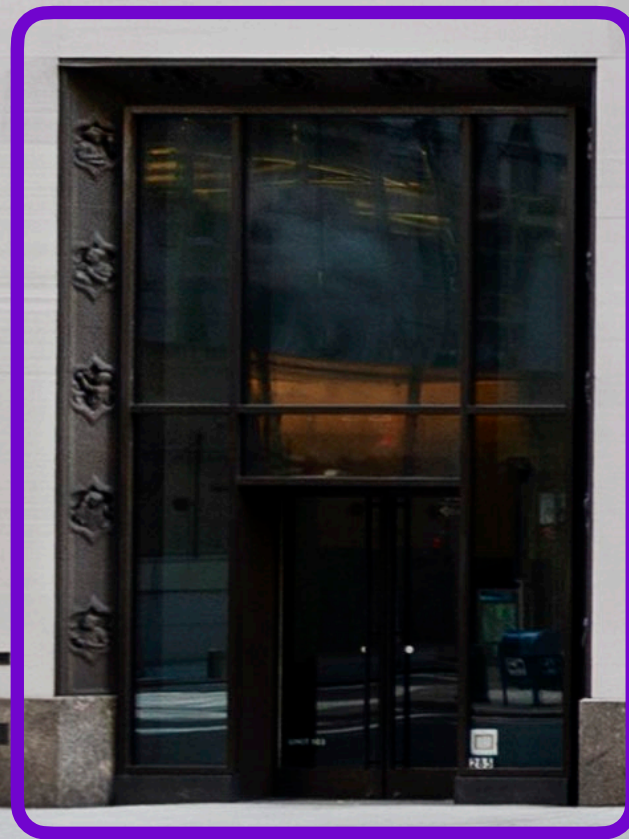


285

MADISON AVENUE

Midtown East
MANHATTAN



mona

285
MADISON
AVENUE

STRONG CO-TENANTS



POPULAR FOOD BLOCK

BRANDON SINGER
brandon@retailbymona.com
516 808 6794

MICHAEL CODY
michael@retailbymona.com
513 374 8630

MAX KREINCES
max@retailbymona.com
631 827 8899

mona

FLOORPLANS

285
MADISON
AVENUE

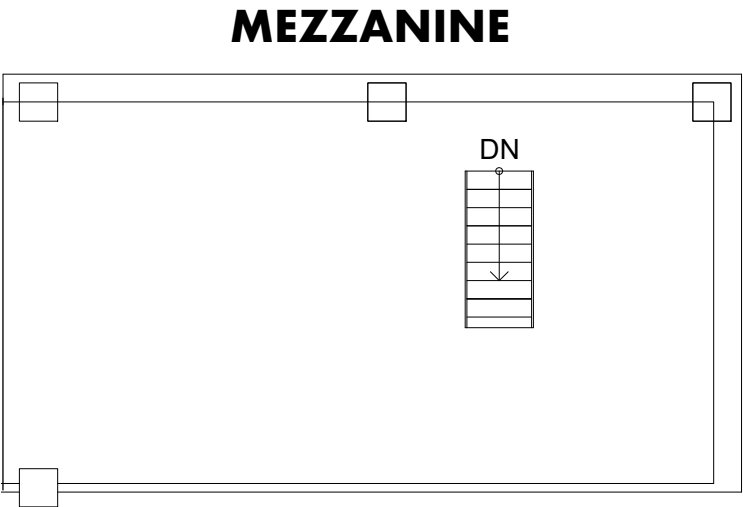
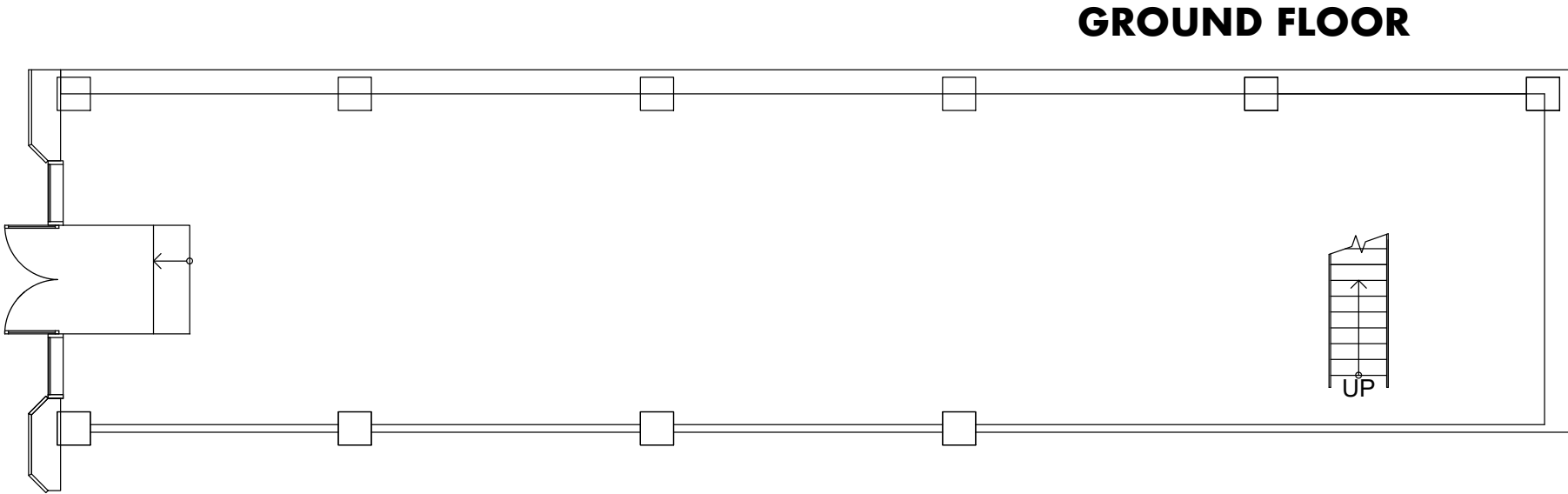
GROUND
1,689 SF

MEZZANINE
601 SF

CEILING HEIGHT
Ground: 21FT 5IN
Mezzanine: 8FT 5IN

FRONTAGE
13 FT

POSSESSION
Immediate



Floor plans and square footage are approximate and need to be confirmed by an architect.

BRANDON SINGER
brandon@retailbymona.com
516 808 6794

MICHAEL CODY
michael@retailbymona.com
513 374 8630

MAX KREINCES
max@retailbymona.com
631 827 8899

mona

HIGHLIGHTS

Formerly Dr. Smood.

Co-tenants include Banco Popular, Dos Toros, and Inday.

Sleek, modern build out.

One block from Grand Central Station and Bryant Park.

At the base of a distinctive, fully occupied 530,000 SF office building.

Office Tenants in the building include Tommy Hilfiger, Brighthouse Financial, Bessemer Venture Partners, StriVectin Operating Company, General Electric Company and Misys International Banking Systems.



285
MADISON
AVENUE



BRANDON SINGER
brandon@retailbymona.com
516 808 6794

MICHAEL CODY
michael@retailbymona.com
513 374 8630

MAX KREINCES
max@retailbymona.com
631 827 8899

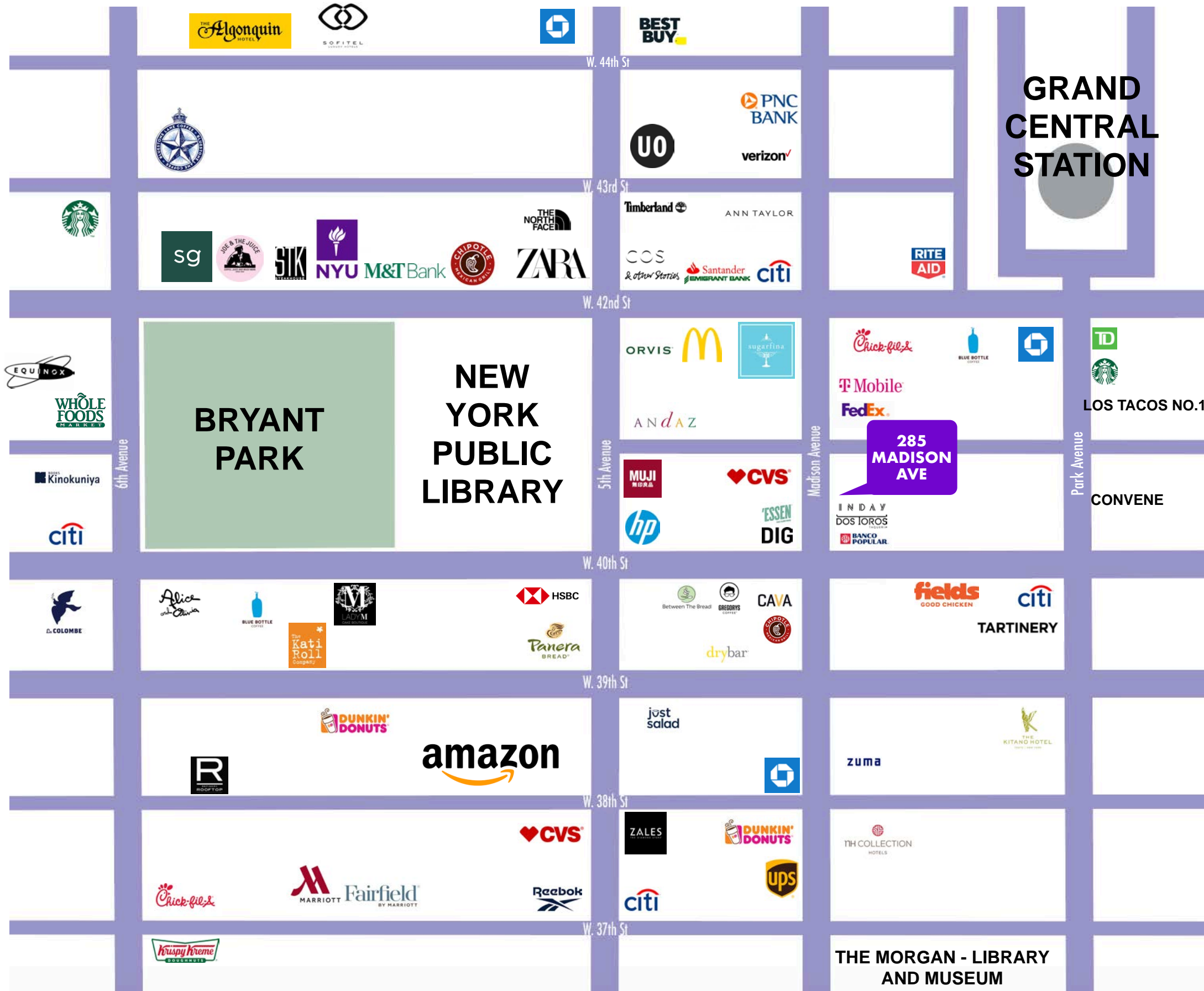
mona

MAP

NEARBY PUBLIC TRANSIT
B D F M 7 4 5 6 N Q R W

SELECT NEARBY
RETAIL TENANTS

Amazon (Coming Soon)
MUJI
Reebok
Zara
The North Face
& Other Stories
Sweetgreen
Panera Bread
Lady M
Equinox
Whole Foods



BRANDON SINGER
brandon@retailbymona.com
516 808 6794

MICHAEL CODY
michael@retailbymona.com
513 374 8630

MAX KREINCES
max@retailbymona.com
631 827 8899

mona

BRANDON SINGER

CEO + FOUNDER

brandon@retailbymona.com

516 808 6794

MICHAEL CODY

DIRECTOR + CO-FOUNDER

michael@retailbymona.com

513 374 8630

MAX KREINCES

ASSOCIATE

max@retailbymona.com

631 827 8899

 @RETAILBYMONA

 RETAIL-BY-MONA

RETAILBYMONA.COM

text me
646 328 6267

mona

