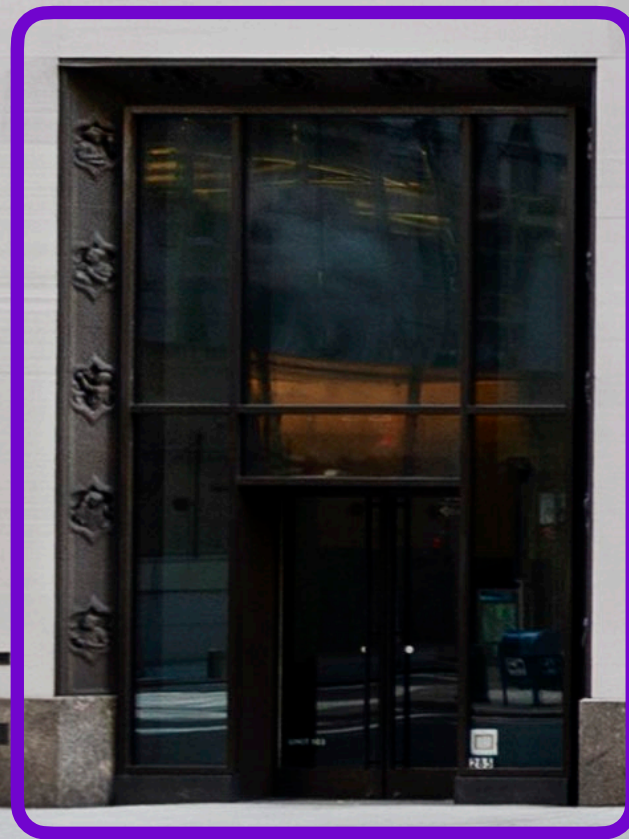


# 285

## MADISON AVENUE

Midtown East  
MANHATTAN

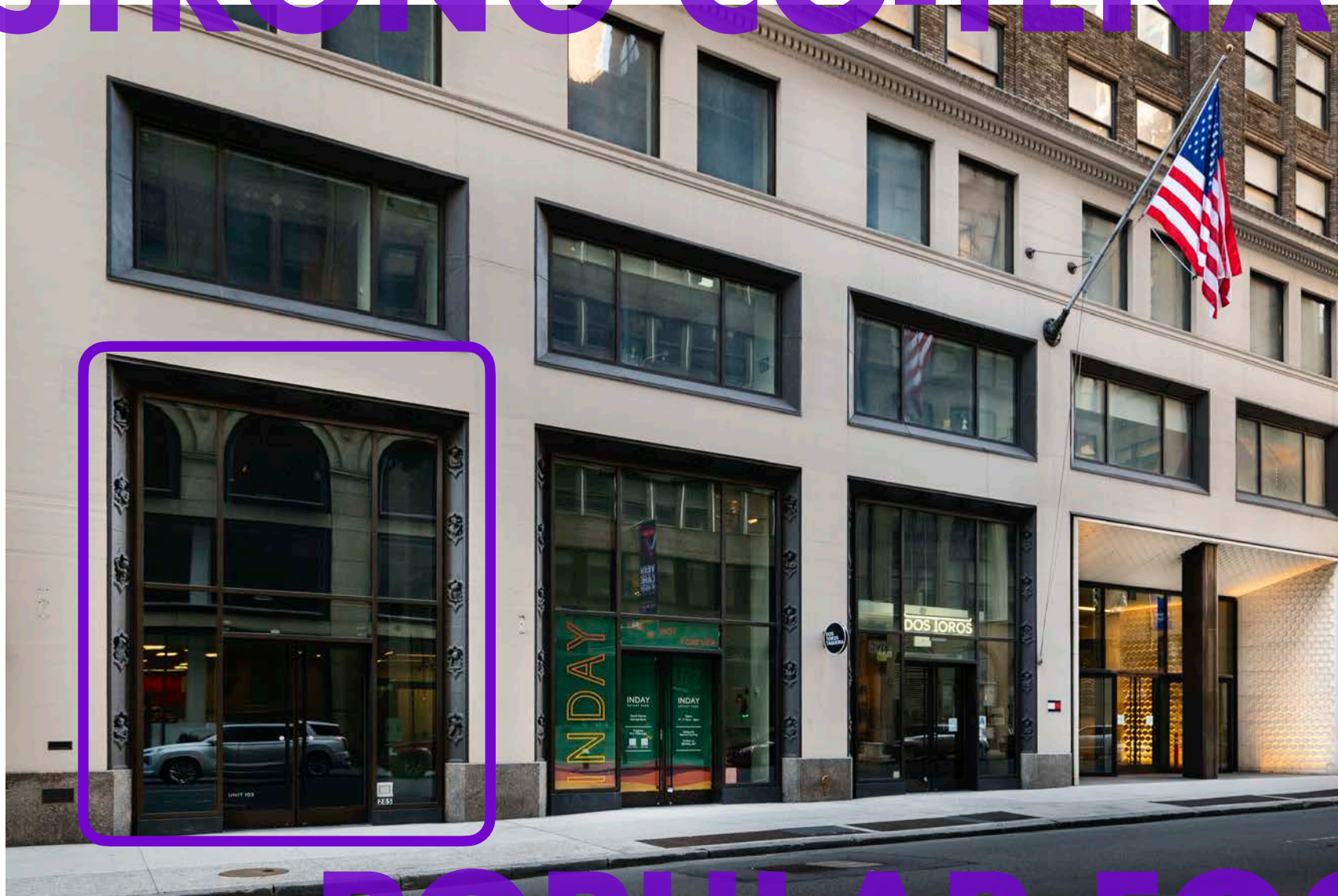


mona



**285**  
MADISON  
AVENUE

# STRONG CO-TENANTS



# POPULAR FOOD BLOCK

BRANDON SINGER  
brandon@retailbymona.com  
516 808 6794

MICHAEL CODY  
michael@retailbymona.com  
513 374 8630

SARA ARMET  
sara@retailbymona.com  
508 498 8757

**mona**

# FLOORPLANS

**285**  
MADISON  
AVENUE

## GROUND

1,689 SF

## MEZZANINE

601 SF

## CEILING HEIGHT

Ground: 21FT 5IN

Mezzanine: 8FT 5IN

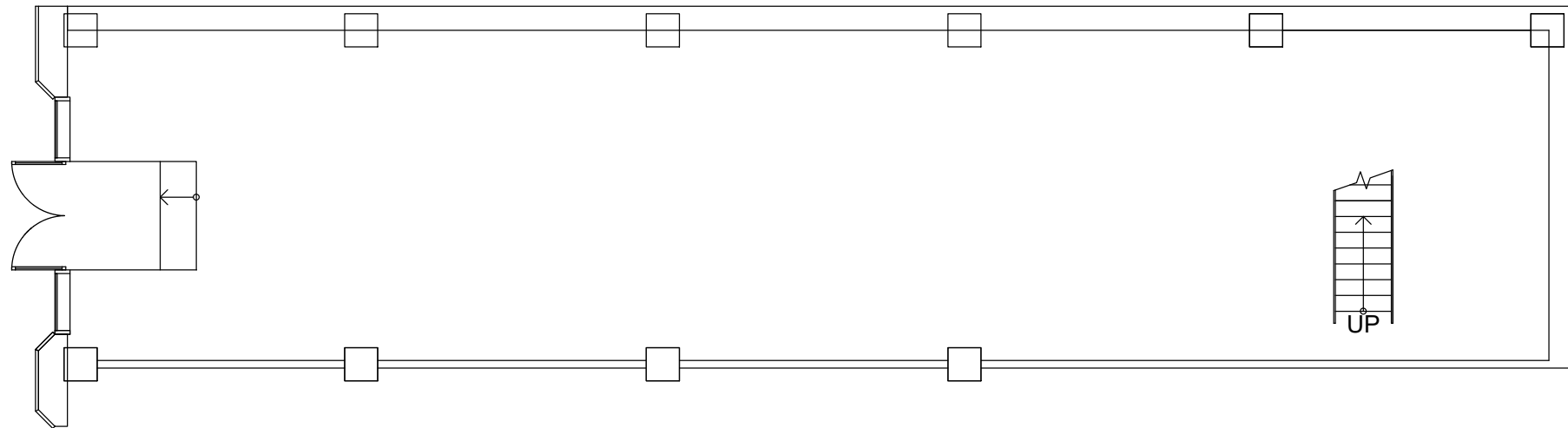
## FRONTAGE

13 FT

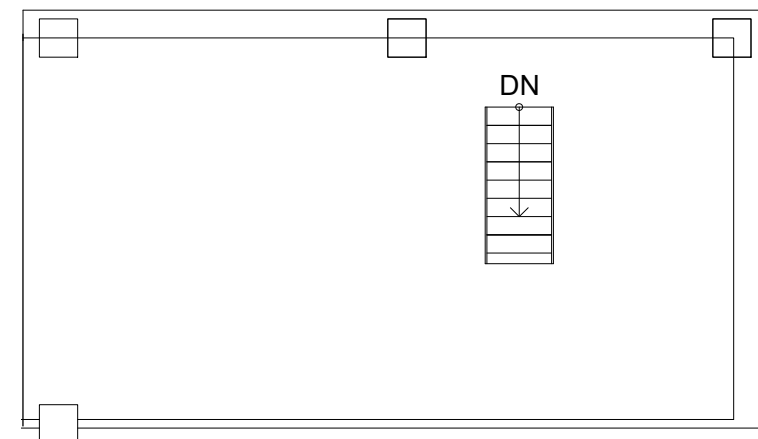
## POSSESSION

Immediate

### GROUND FLOOR



### MEZZANINE



Floor plans and square footage are approximate and need to be confirmed by an architect.

BRANDON SINGER  
brandon@retailbymona.com  
516 808 6794

MICHAEL CODY  
michael@retailbymona.com  
513 374 8630

SARA ARMET  
sara@retailbymona.com  
508 498 8757

mona



# HIGHLIGHTS

Formerly Dr. Smood.

Co-tenants include Banco Popular, Dos Toros, and Inday.

Sleek, modern build out.

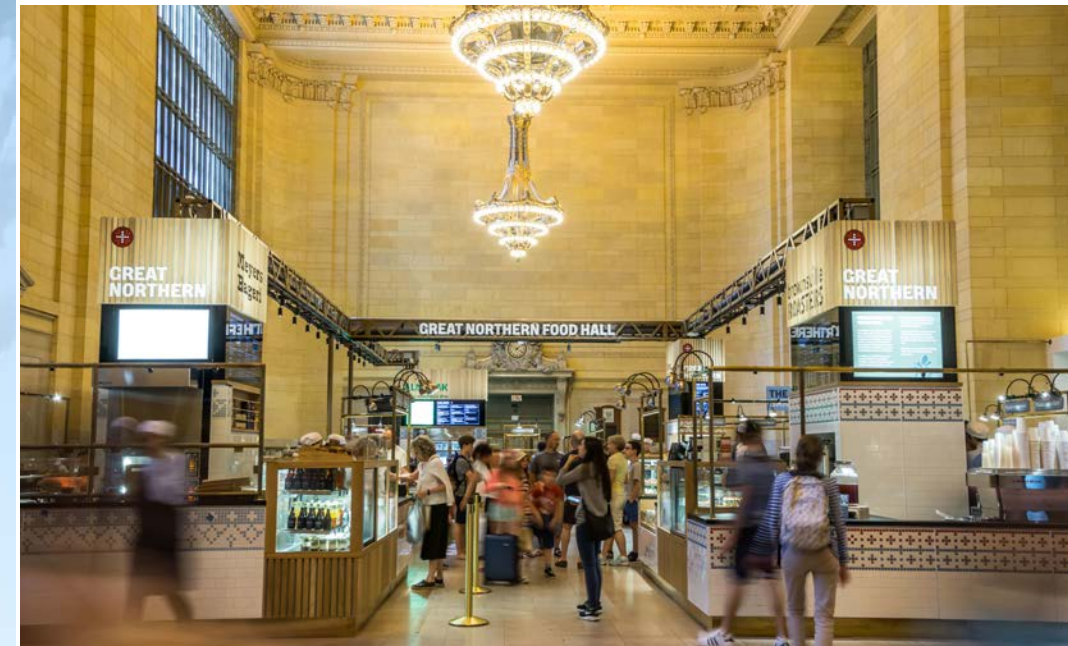
One block from Grand Central Station and Bryant Park.

At the base of a distinctive, fully occupied 530,000 SF office building.

Office Tenants in the building include Tommy Hilfiger, Brighthouse Financial, Bessemer Venture Partners, StriVectin Operating Company, General Electric Company and Misys International Banking Systems.



**285**  
MADISON  
AVENUE



BRANDON SINGER  
brandon@retailbymona.com  
516 808 6794

MICHAEL CODY  
michael@retailbymona.com  
513 374 8630

SARA ARMET  
sara@retailbymona.com  
508 498 8757

mona



**SELECT NEARBY  
RETAIL TENANTS**

**Amazon (Coming Soon)**

**MUJI**

**Reebok**

**Zara**

**The North Face**

**& Other Stories**

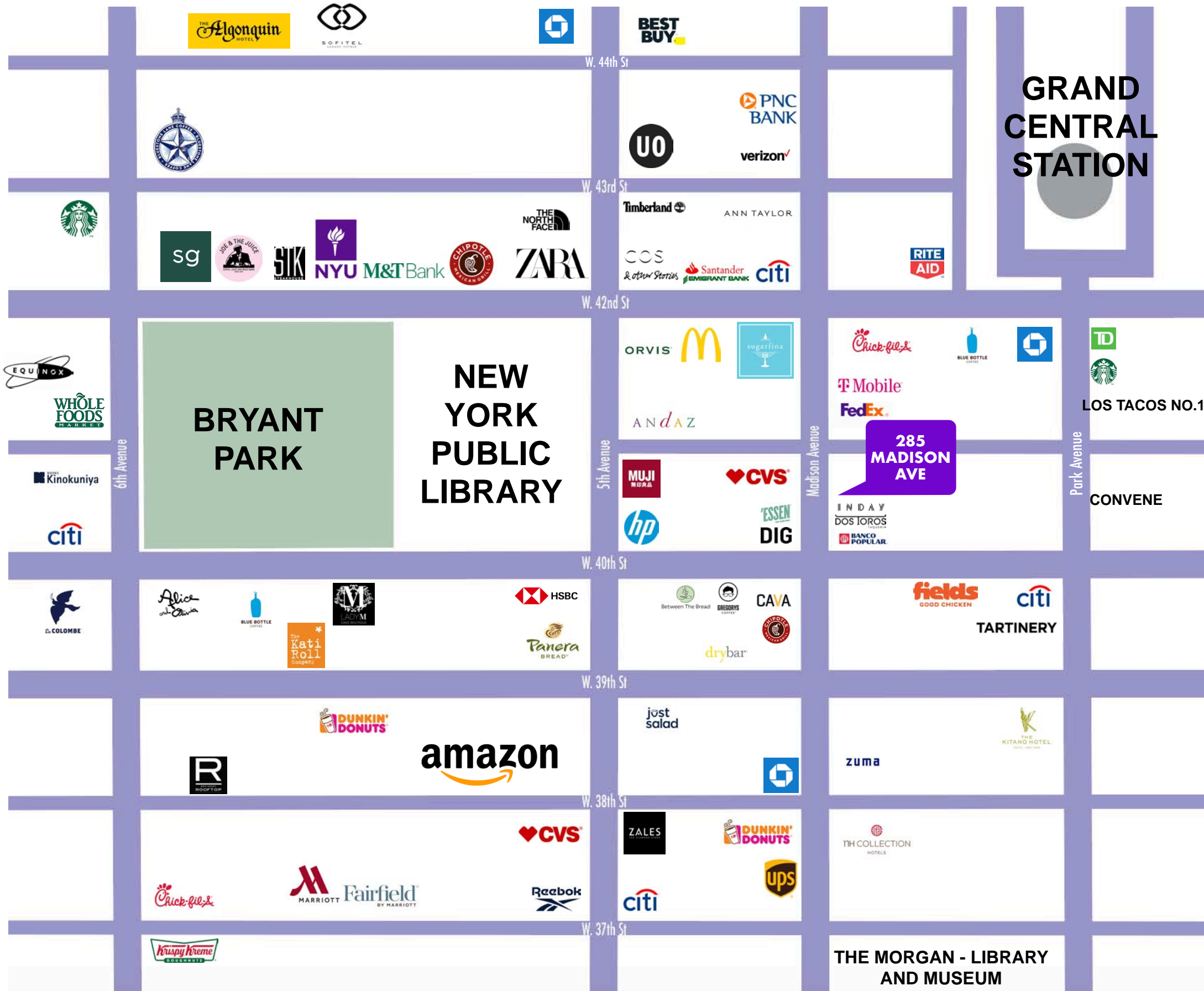
**Sweetgreen**

**Panera Bread**

**Lady M**

**Equinox**

**Whole Foods**



**BRANDON SINGER**  
brandon@retailbymona.com  
516 808 6794

**MICHAEL CODY**  
michael@retailbymona.com  
513 374 8630

**SARA ARMET**  
sara@retailbymona.com  
508 498 8757

mona

**BRANDON SINGER**

**CEO + FOUNDER**

brandon@retailbymona.com  
516 808 6794

**MICHAEL CODY**

**DIRECTOR + CO-FOUNDER**

michael@retailbymona.com  
513 374 8630

**SARA ARMET**

**PORTFOLIO MANAGER**

sara@retailbymona.com  
508 498 8757

 @RETAILBYMONA

 RETAIL-BY-MONA

RETAILBYMONA.COM

**text me**  
**646 328 6267**

**mona**

