

285Madison

Centrally Located and Amenity Rich



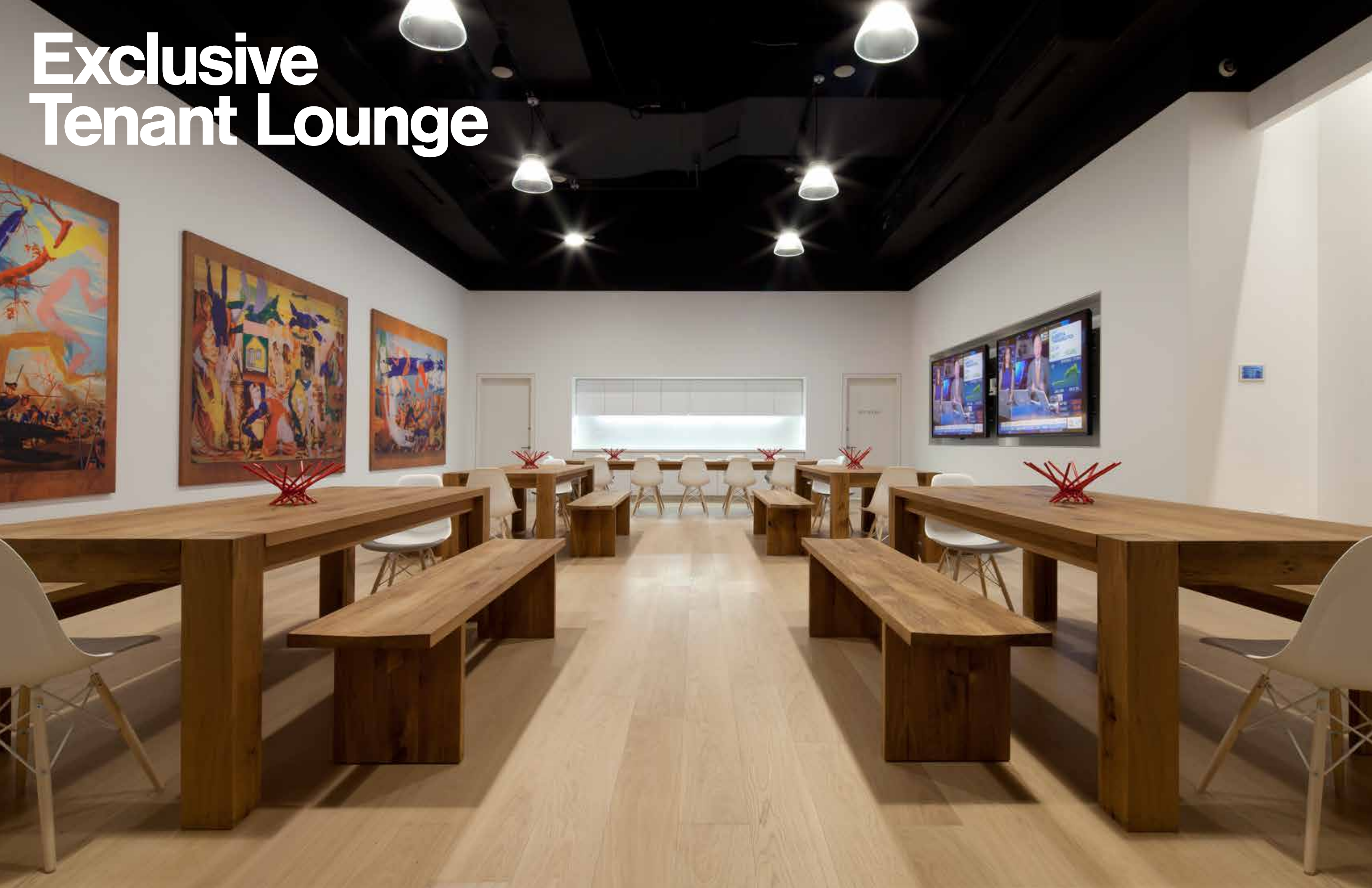
Full Floors Ranging from 11,219 to 23,688sf
Block Up to 100,000sf | Prebuilts Available

The newly renovated 285 Madison Avenue offers full floors ranging from 11,219 to 23,688 square feet, as well as a block up to 100,000 square feet. A landscaped roof terrace, exclusive tenant lounge, meeting room and recreation space offer places to gather, to think and to work together. 285 Madison has both bike storage and a fully equipped gym with locker rooms and showers. Sublimely central, the property is just one block from both Grand Central Terminal and Bryant Park in the heart of midtown Manhattan.

Art + Architecture



Exclusive Tenant Lounge



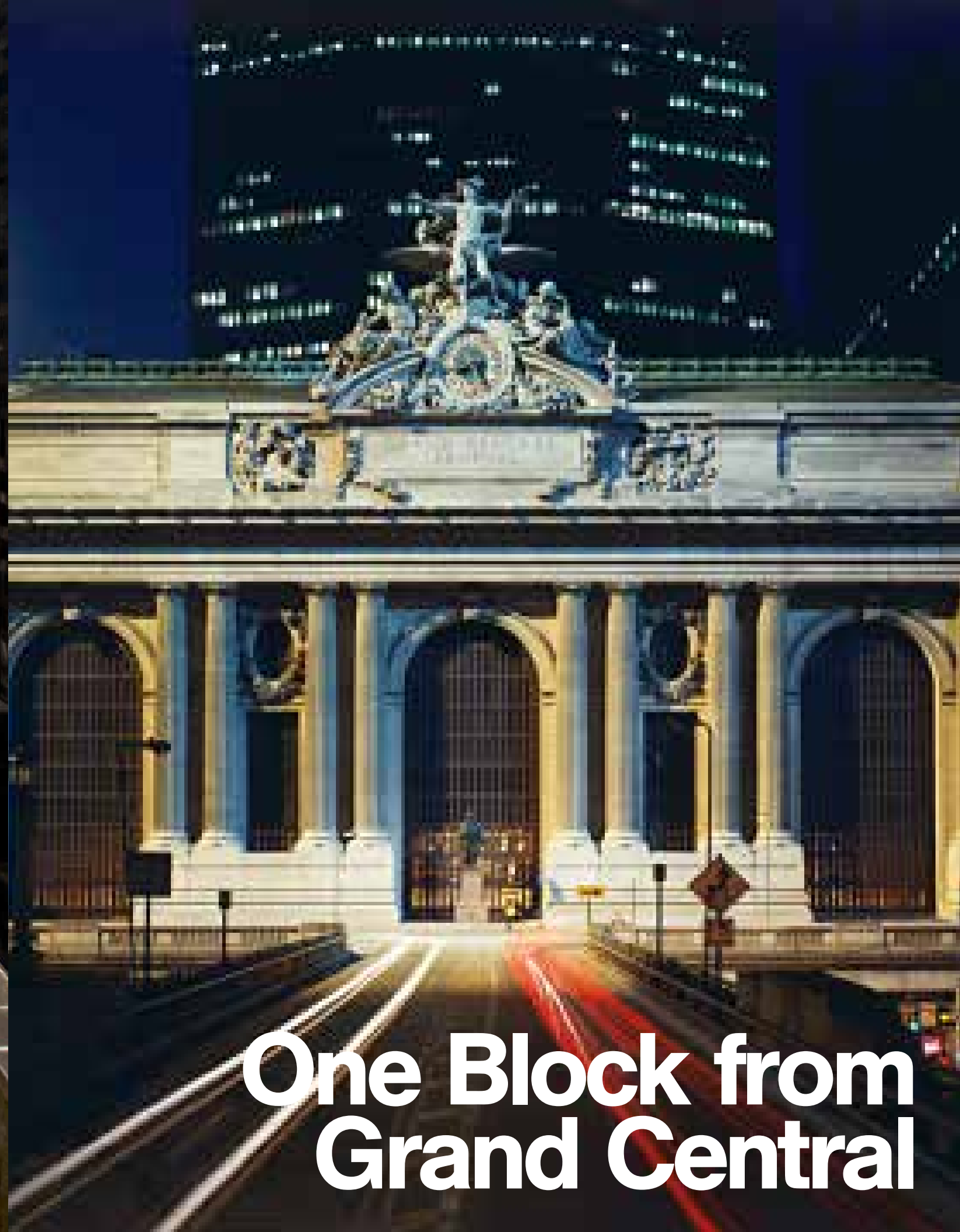


Penthouse Meeting & Recreation Space



Gym & Bike Room

Roof Terrace



**One Block from
Grand Central**

Neighbor to Bryant Park



RFR



Alexander Chudnoff
212 418 2622
alexander.chudnoff@am.jll.com

Mitchell Konsker
212 812 5766
mitchell.konsker@am.jll.com

Dan Turkewitz
212 418 2689
dan.turkewitz@am.jll.com

Matthew Polhemus
212 812 5705
matt.polhemus@am.jll.com

Diana Biasotti
212 812 5751
diana.biasotti@am.jll.com

Oliver Katcher
212 812 5720
oliver.katcher@am.jll.com