

A modern office interior with a curved ceiling featuring integrated LED lighting. The floor is made of light-colored wood. In the foreground, a man in a dark shirt and jeans stands at a white reception desk with a red top edge, talking to a woman sitting behind the desk. In the background, another man in a blue shirt and jeans walks through a glass-walled office area. The office has desks with computers and plants.

350
MADISON
AVENUE

MOVE-IN READY
74,000 SF BLOCK











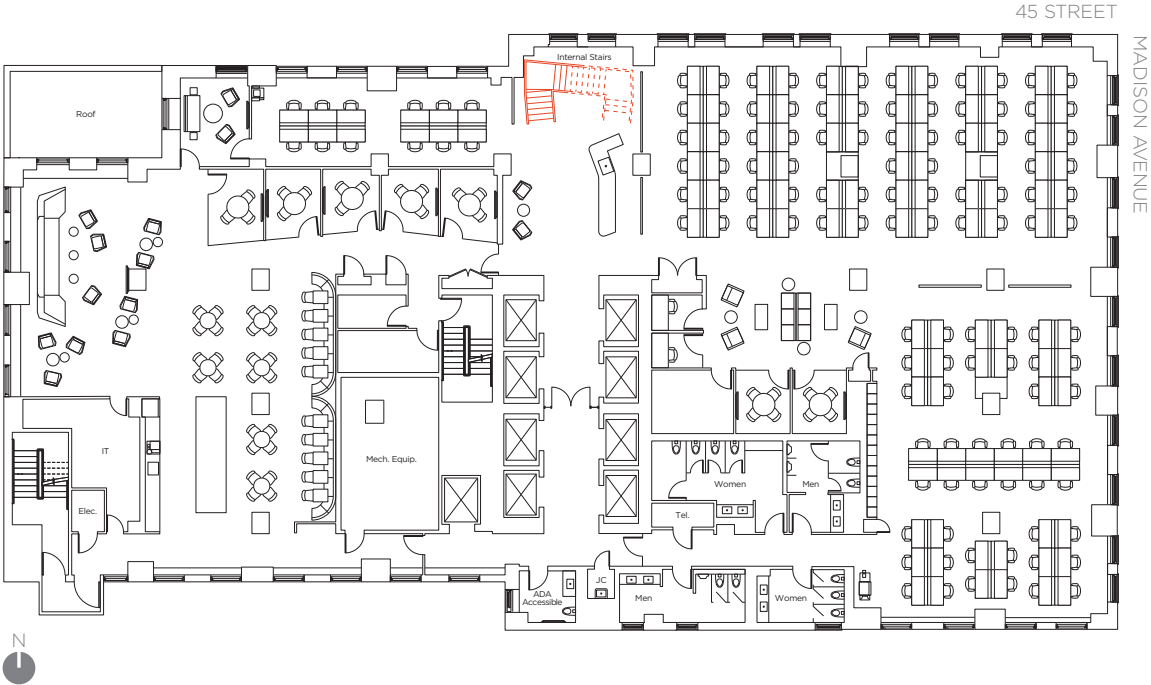






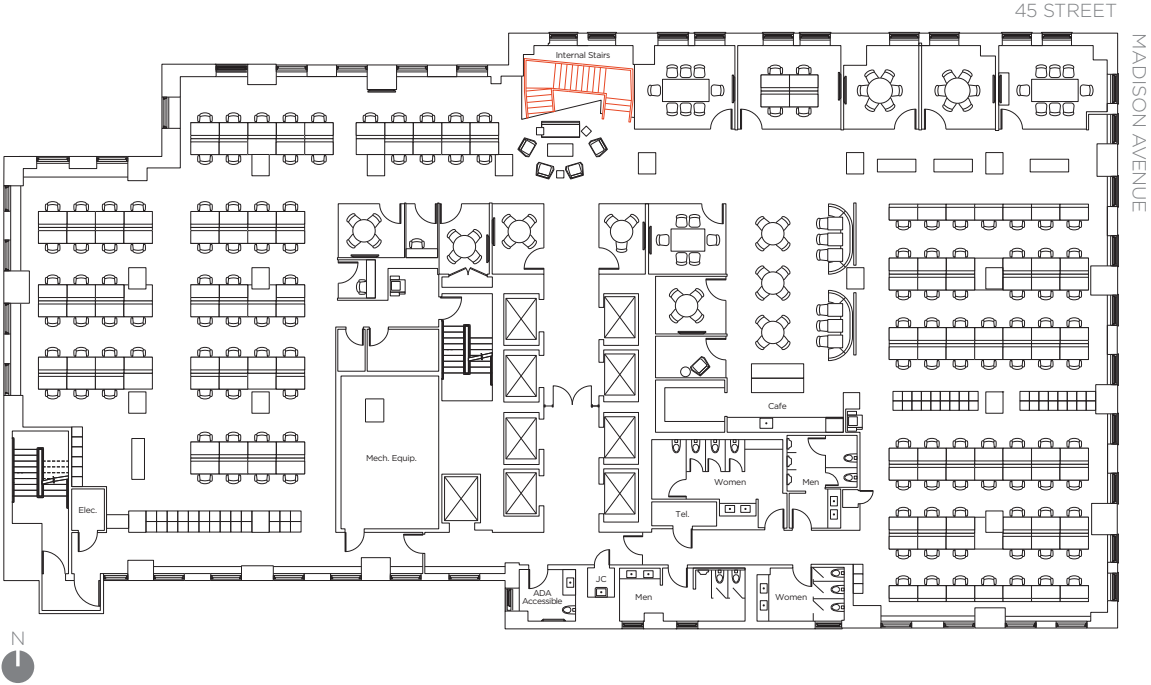
FULL FLOOR 12

19,038 SF



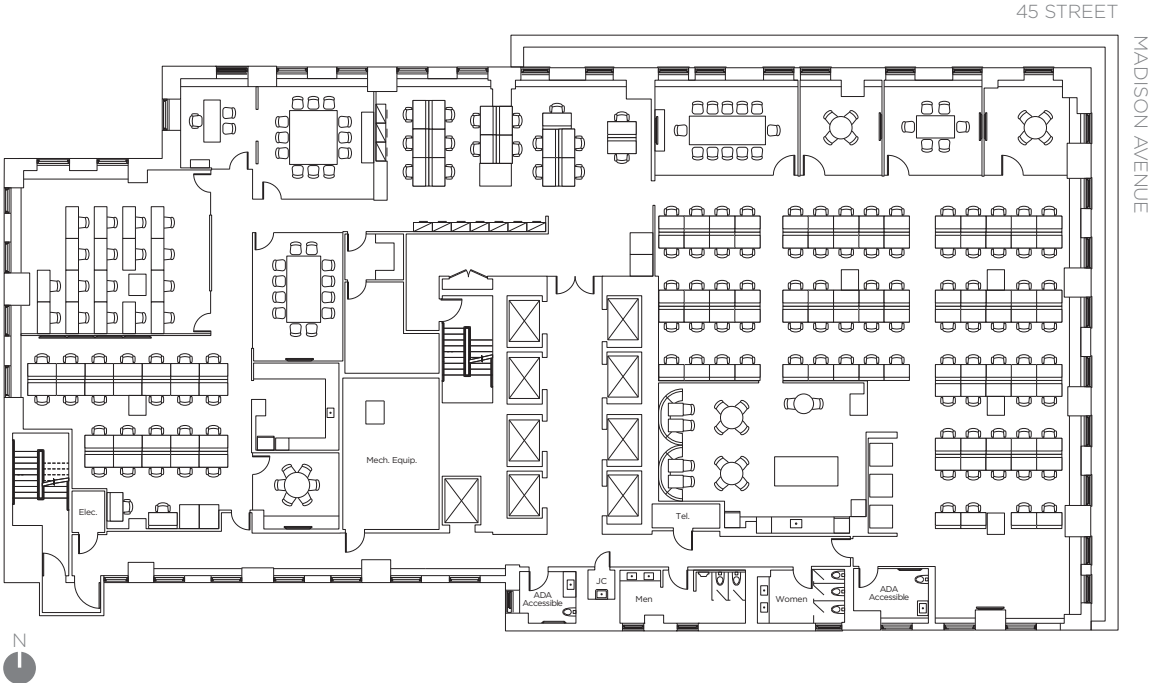
FULL FLOOR 14

19,038 SF



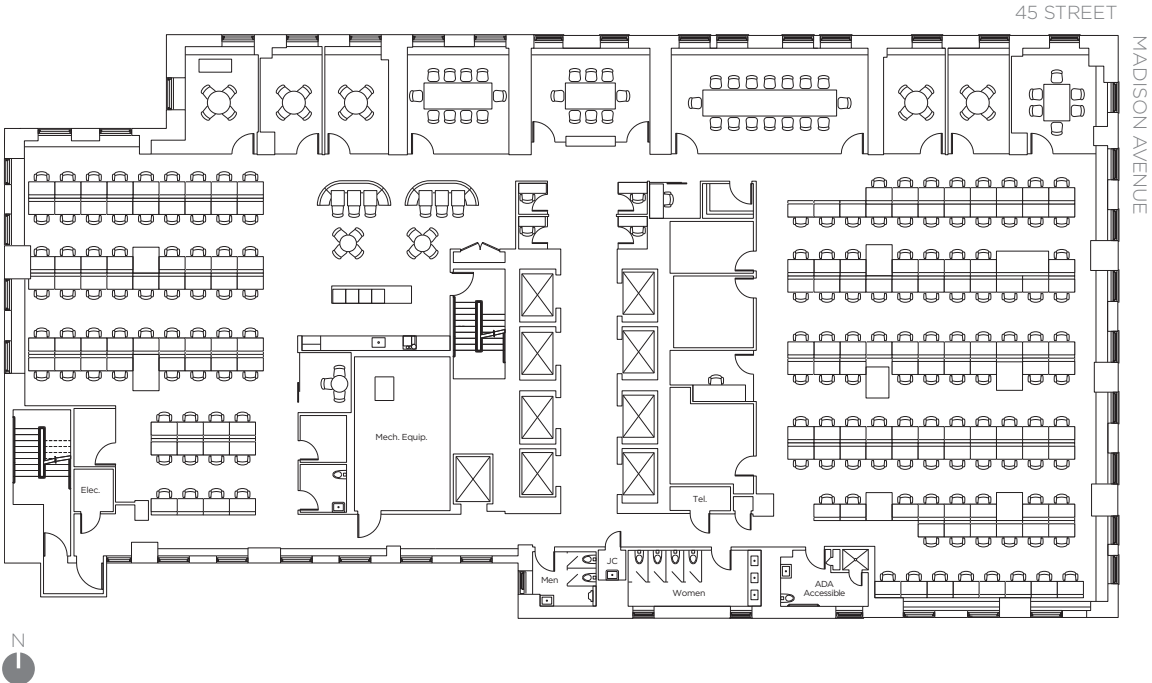
FULL FLOOR 15

17,690 SF

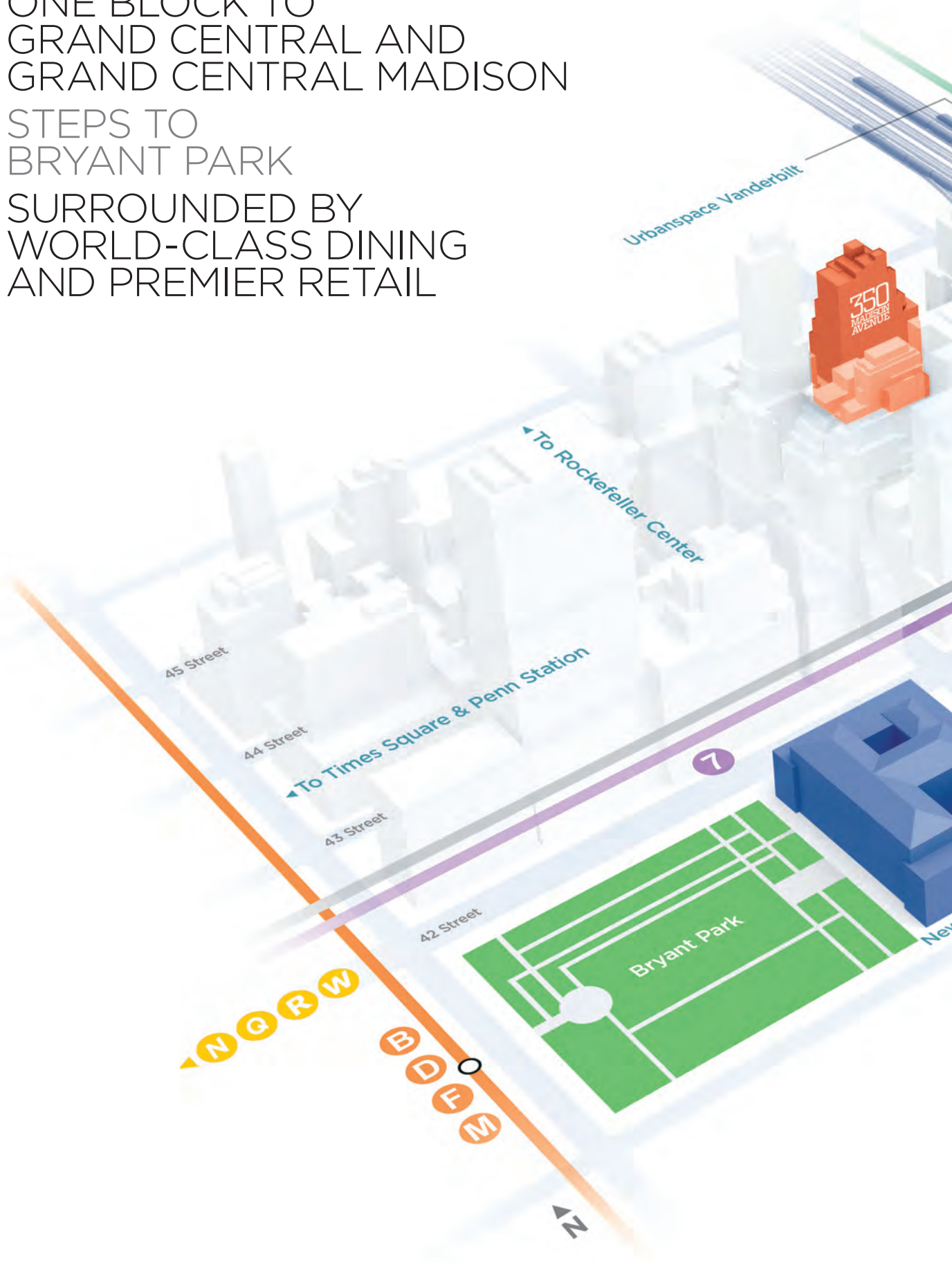


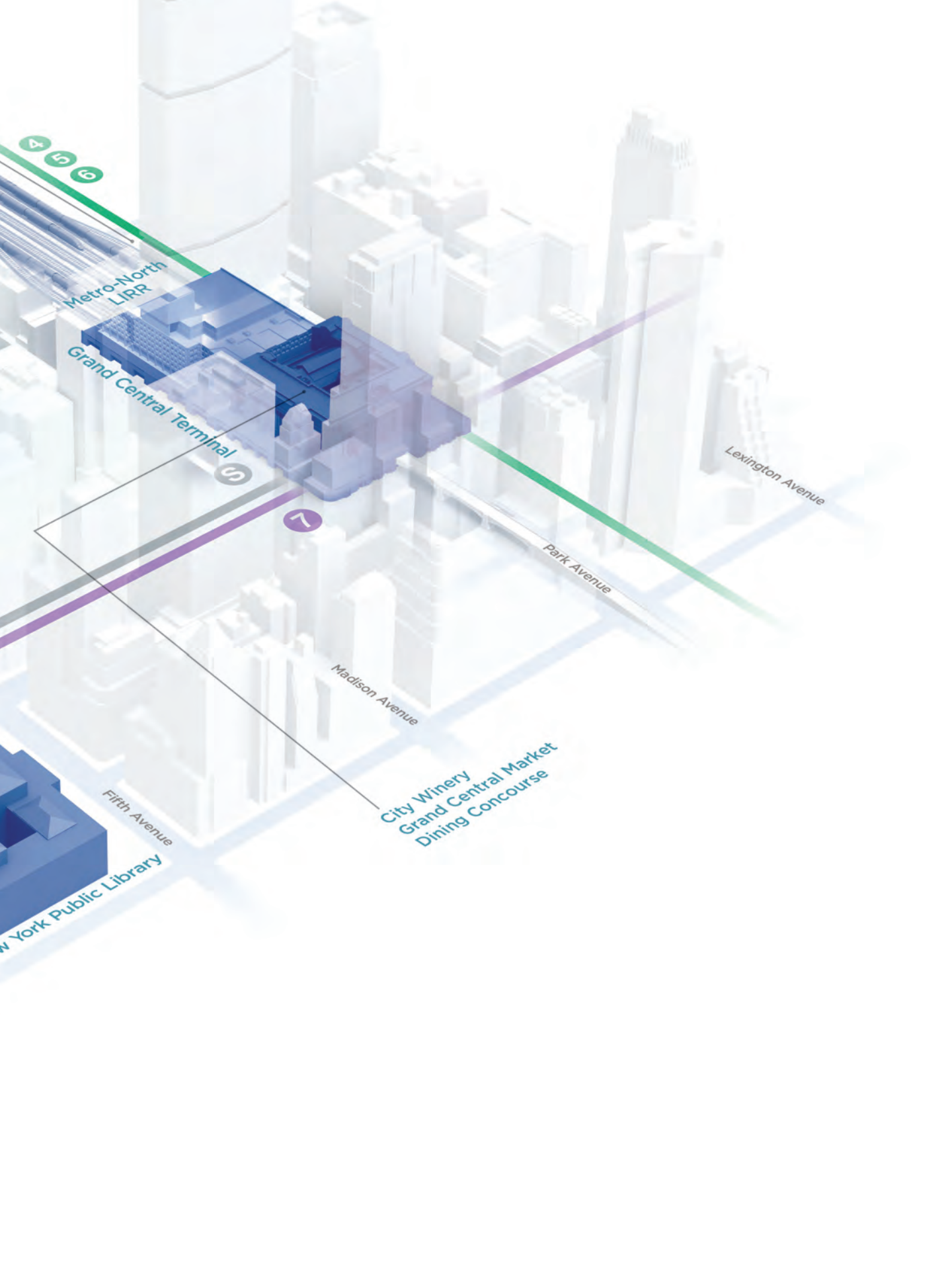
FULL FLOOR 16

17,690 SF



ONE BLOCK TO
GRAND CENTRAL AND
GRAND CENTRAL MADISON
STEPS TO
BRYANT PARK
SURROUNDED BY
WORLD-CLASS DINING
AND PREMIER RETAIL





4 5 6

Metro-North
LIRR

Grand Central Terminal

6

7

Lexington Avenue

Park Avenue

Madison Avenue

City Winery
Grand Central Market
Dining Concourse

Fifth Avenue

New York Public Library



RFR

rfr.com
rfrspace.com
@rfrrealty

AJ Camhi
212 308 0700
acamhi@rfr.com

Rob Weller
646 277 9254
rweller@rfr.com

Ryan Silverman
212 509 9075
rsilverman@rfr.com