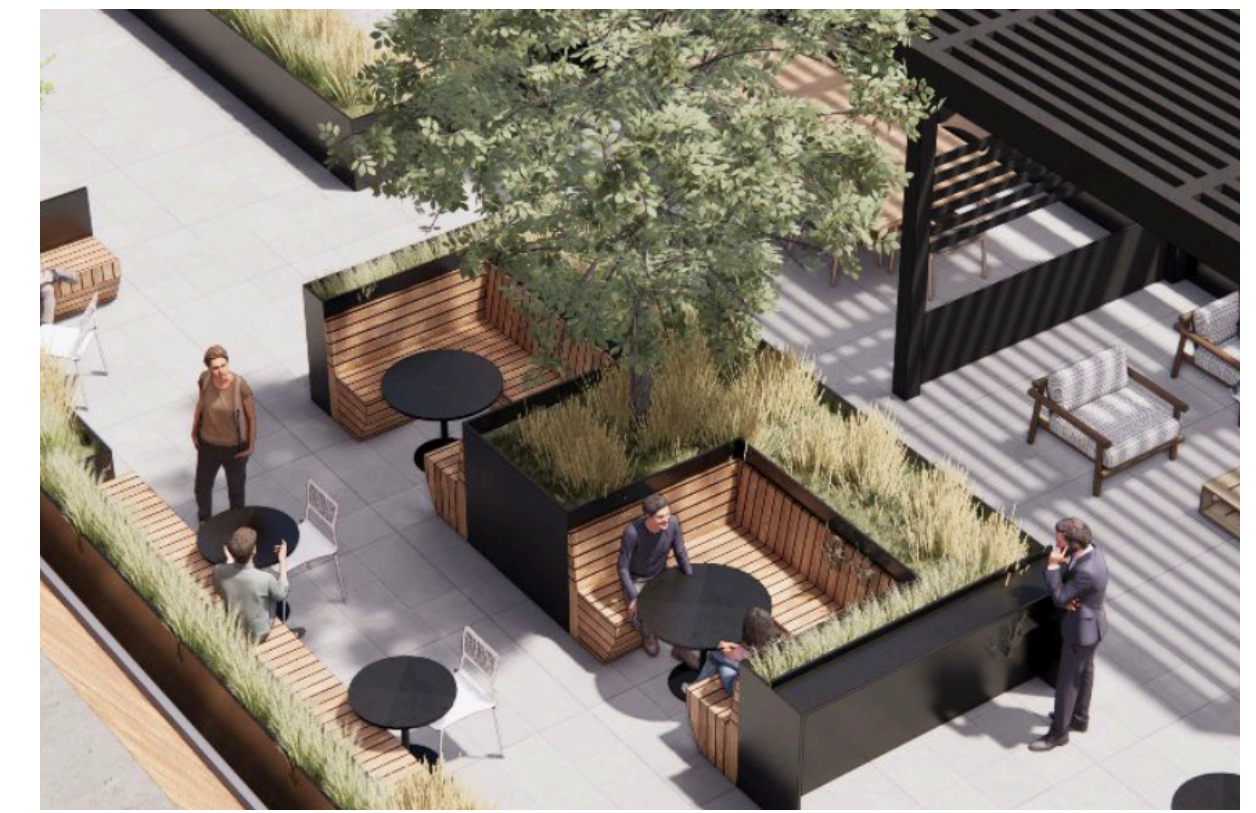


90 Fifth Avenue



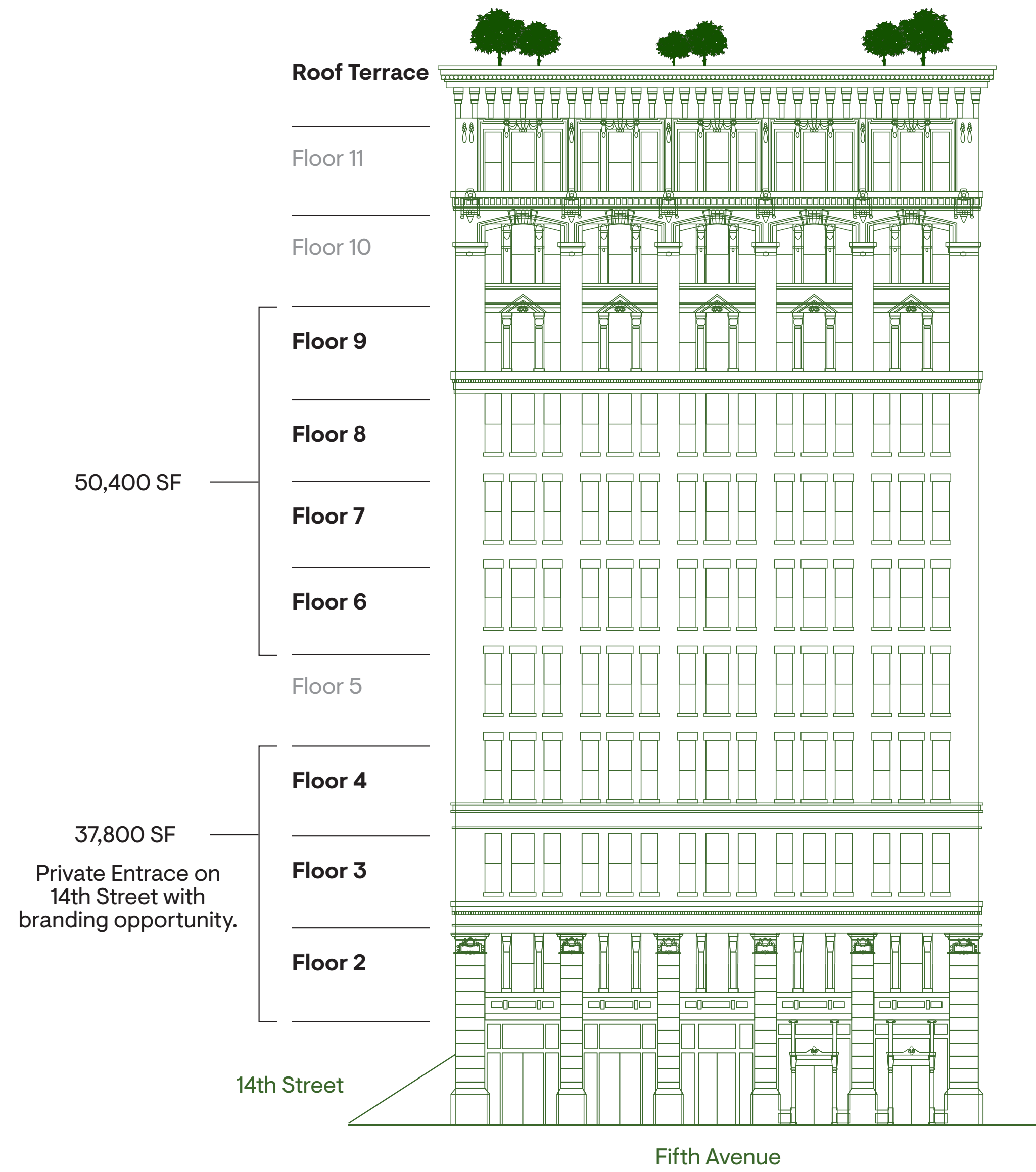
Timelessly Modern.

One block from Union Square at the corner of 14th Street and Fifth Avenue, 90 Fifth Avenue epitomizes the elegance of turn of the 20th century architecture.

Efficient floorplates of 12,600 SF with 11'6" ceiling heights maximize natural light across four elevations.

RFR

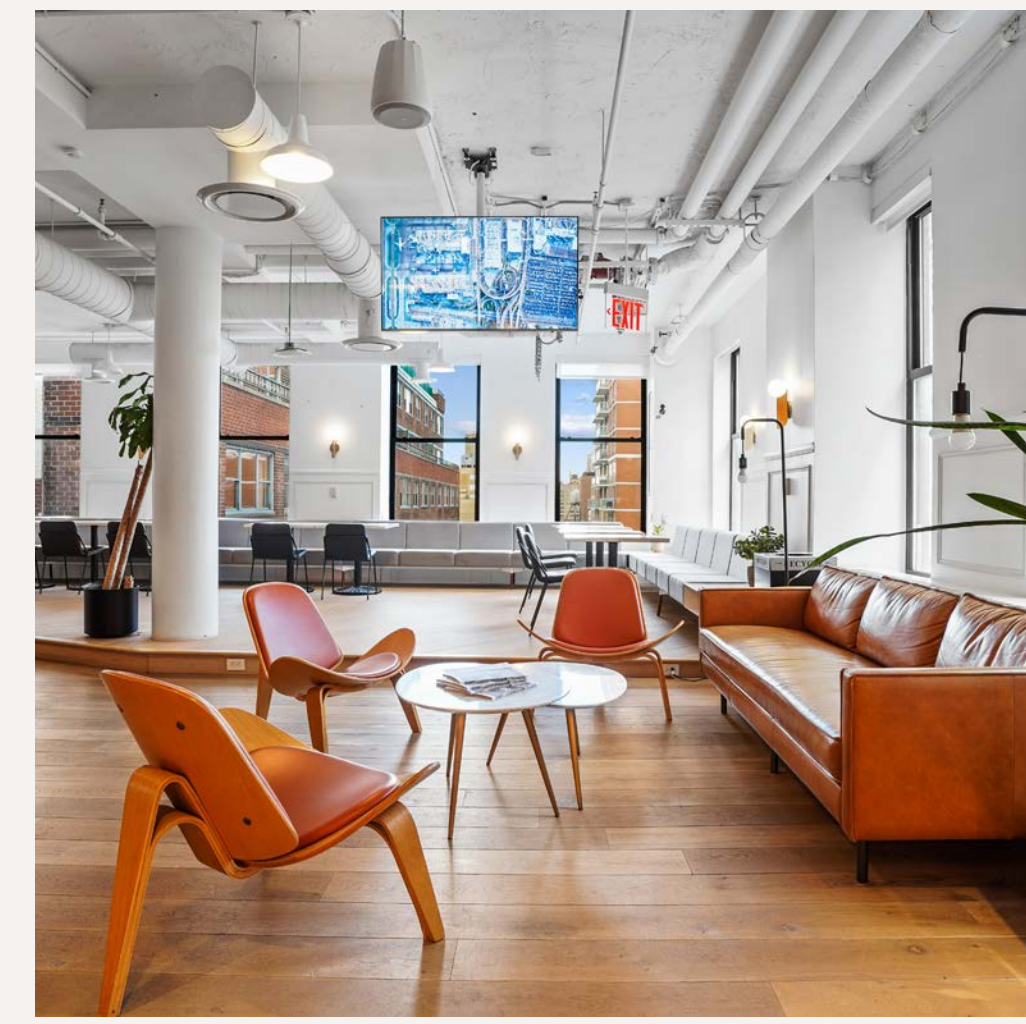
37,800^{SF} – 50,400^{SF} Block Opportunities



- High Quality, Modern Office with Abundant Natural Light
- One Block from Union Square
- Large Floorplates of 12,600 SF with High Ceilings
- Fifth Avenue Flag Signage
- Headquarters Opportunity with Private Branded Entry along 14th Street
- 3,000 SF Landscaped Roof Terrace

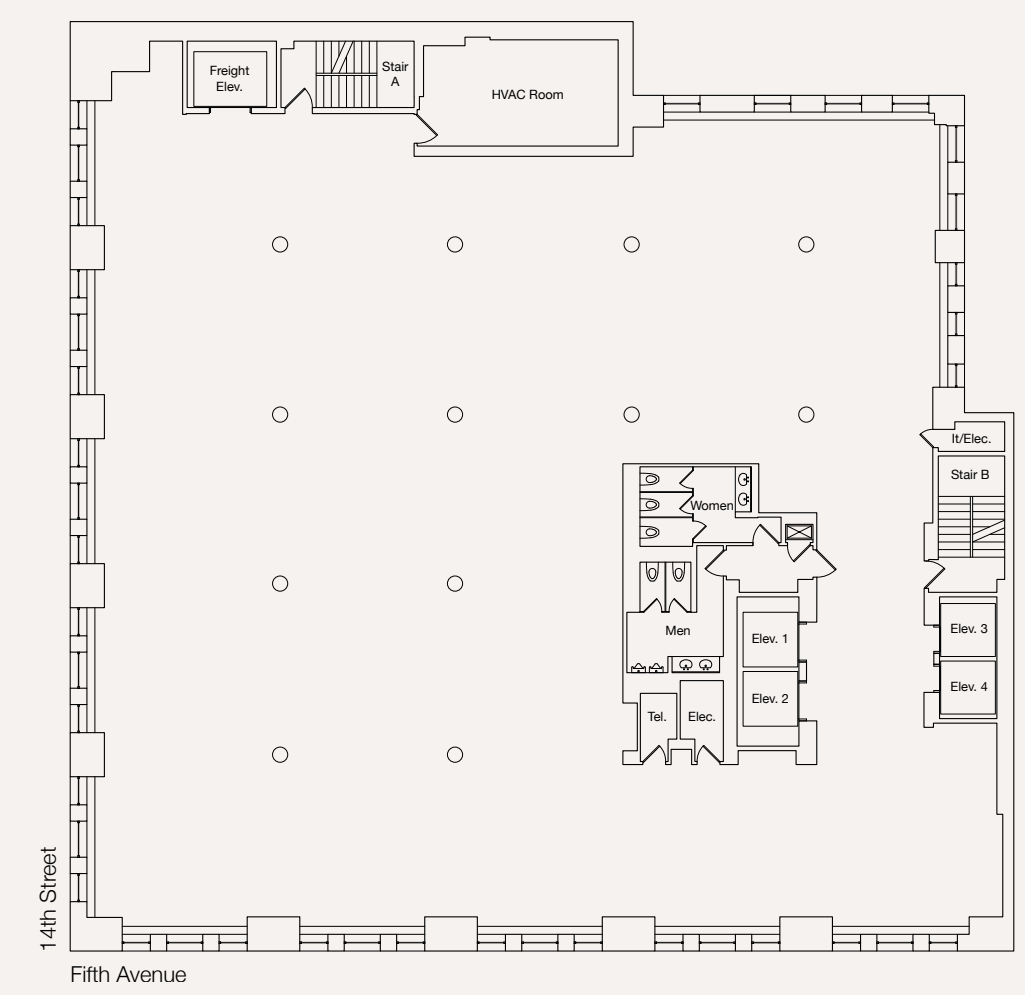
Floorplans

- 11'6" Ceiling Heights
- Large Windows



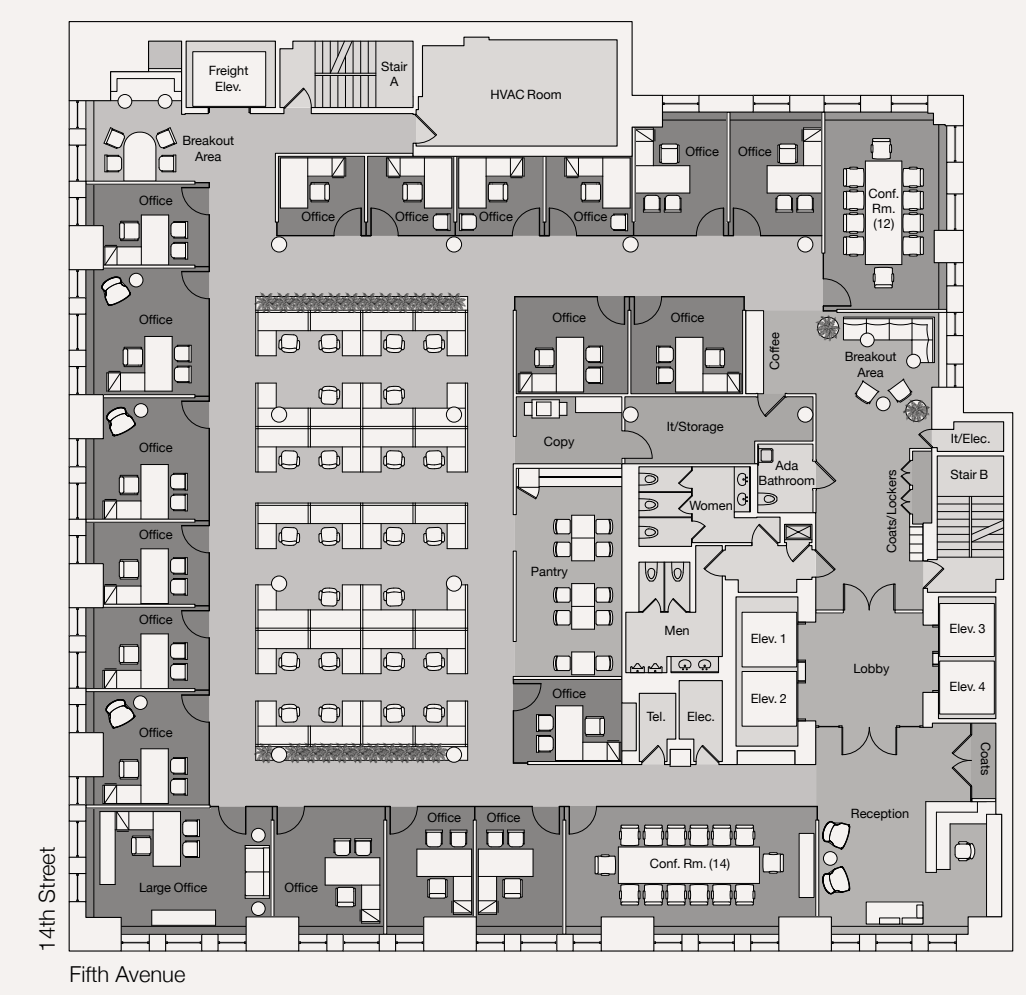
01. Core & Shell Plan

North ➤



02. Creative Office Plan

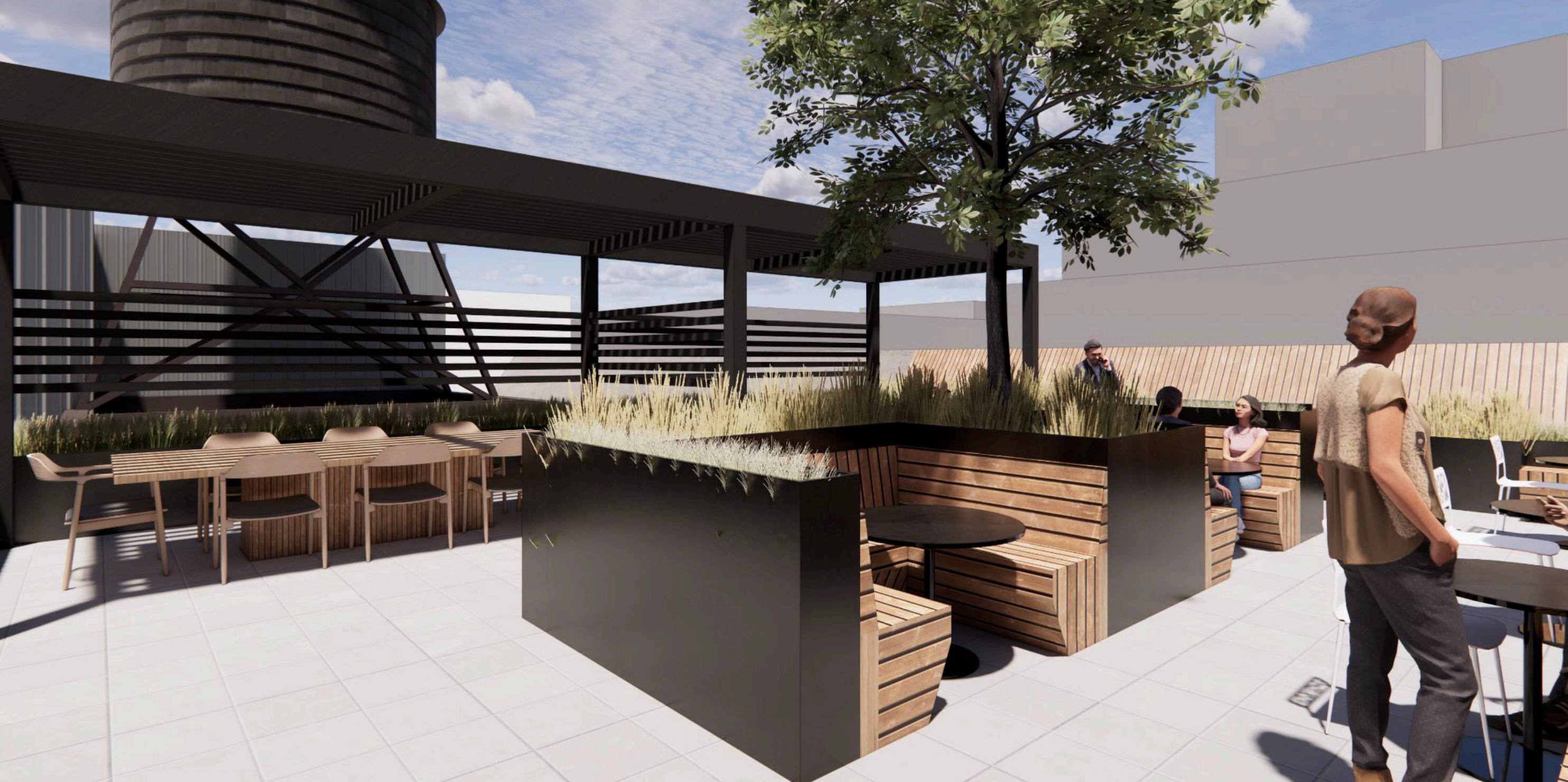
North ➤



Roof Terrace

3,000 SF optimized roof terrace designed by STUDIOS Architecture to suit all seasons.

The landscaped roof terrace, with media functionality and WiFi, harmonizes the indoor and outdoor work spaces and promotes collaborative and relaxing work environments that result in increased employee satisfaction, innovation and productivity.



New arrival experience merges art and real estate.

Redesigned lobby and elevators featuring contemporary design and finishes by STUDIOS Architecture — with branding opportunities on Fifth Avenue and 14th Street.





The Neighborhood

Location

One block from Union Square at the northwest corner of 14th Street and Fifth Avenue in the Midtown South Union Square submarket is one of New York City's most vibrant neighborhoods populated by firms engaged in media, architecture, technology and publishing.

The vibrant community is known for its choice restaurants, diverse retailers, off-Broadway productions, excellent universities and its iconic urban park.

Union Square Park is the centerpiece of the district. Its tree-lined pathways, historic monuments, and popular farmers' market attract thousands of New Yorkers and tourists each day.

Transit

With quick access to the 4, 5, 6, F, L, M, N, Q, R, and W subway lines and the 14th Street PATH train, commuters love the ease of access to and from the office.

1 Minute Walk

Union Square Park

4 Minute Walk

Washington Square Park

7 Minute Walk

Madison Square Park

18 Minute Walk

Meatpacking District & High Line

Leasing information

AJ Camhi
212 308 0700
acamhi@rfr.com

Paul Milunec
212 223 1712
pmilunec@rfr.com

Rob Weller
646 277 9254
rweller@rfr.com

RFR