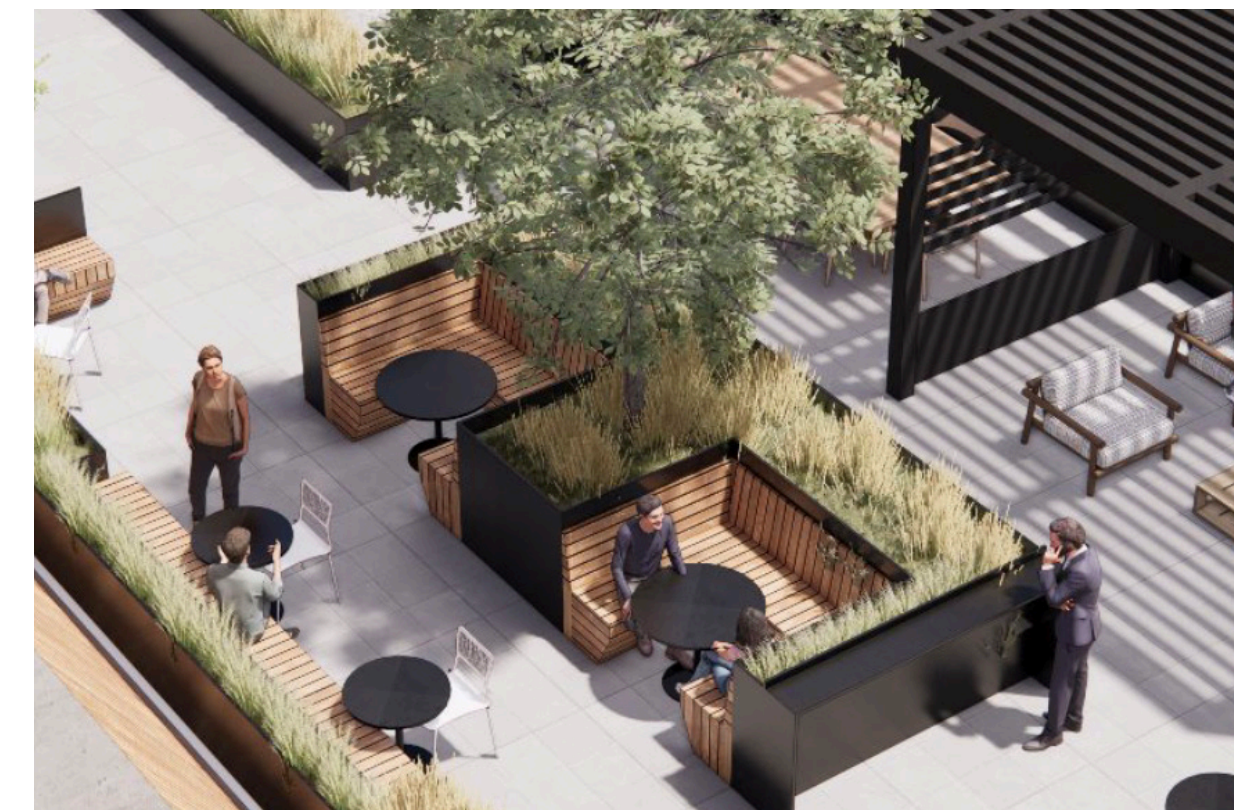




# 90FifthAvenue



## Timelessly Modern.

One block from Union Square at the corner of 14th Street and Fifth Avenue, 90 Fifth Avenue epitomizes the elegance of turn of the 20th century architecture.

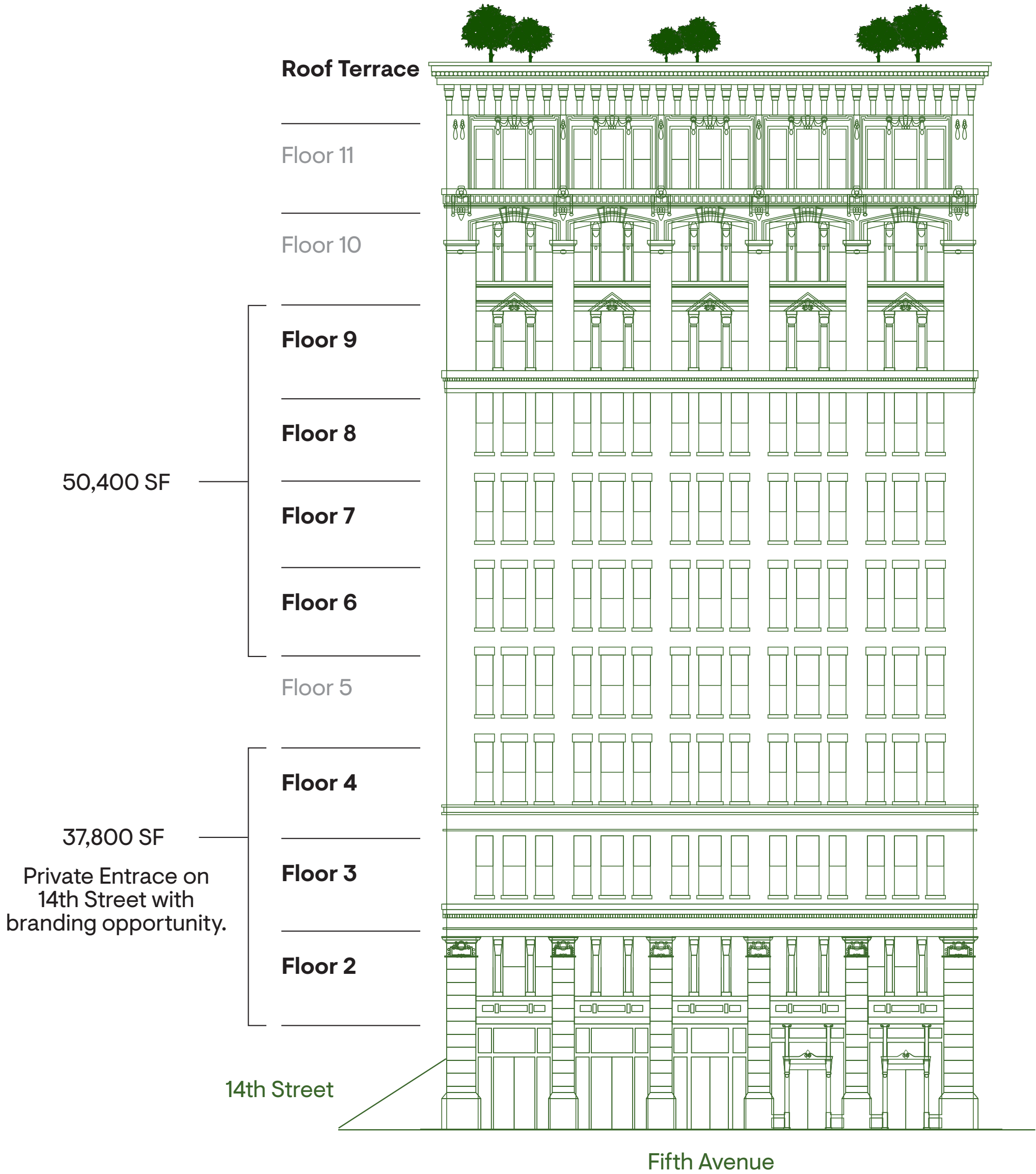
Efficient floorplates of 12,600 SF with 11'6" ceiling heights maximize natural light across four elevations.

**RFR CBRE**



# 37,800<sup>SF</sup> – 50,400<sup>SF</sup>

## Block Opportunities



- High Quality, Modern Office with Abundant Natural Light
- One Block from Union Square
- Large Floorplates of 12,600 SF with High Ceilings
- Fifth Avenue Flag Signage
- Headquarters Opportunity with Private Branded Entry along 14th Street
- 3,000 SF Landscaped Roof Terrace

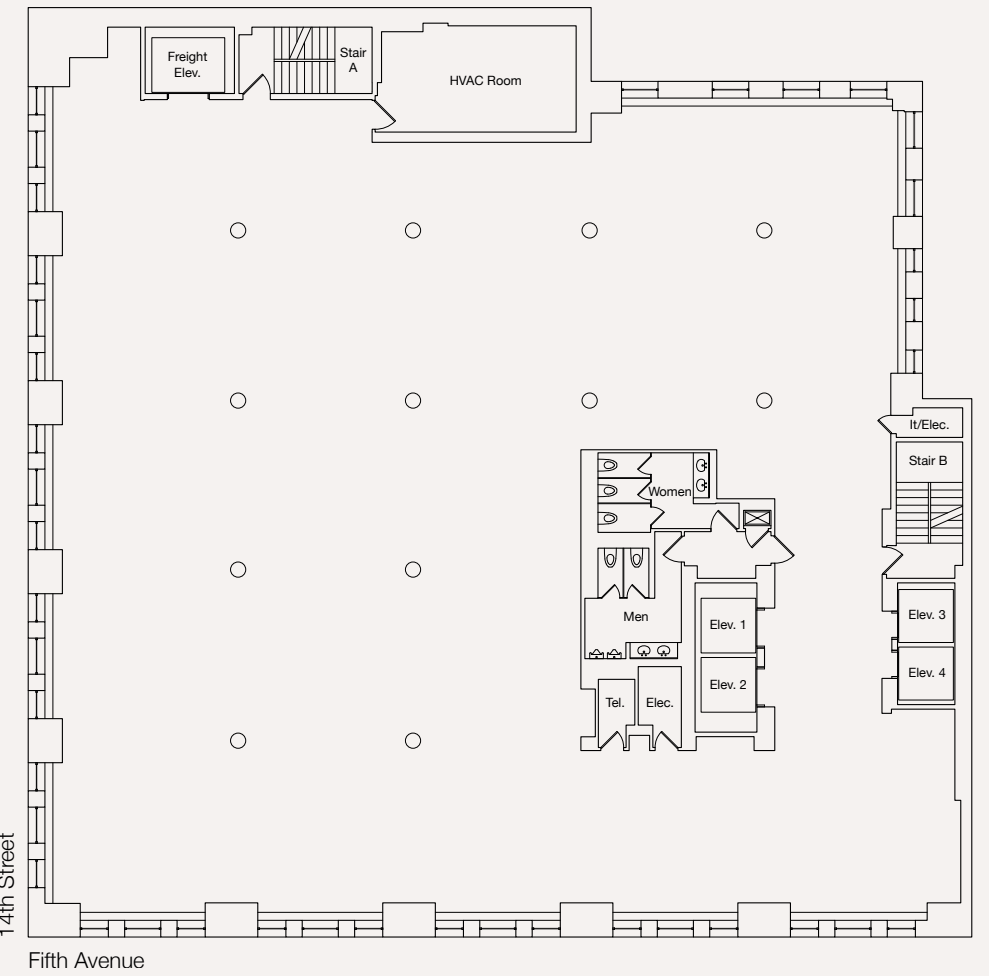
# Floorplans

11'6" Ceiling Heights

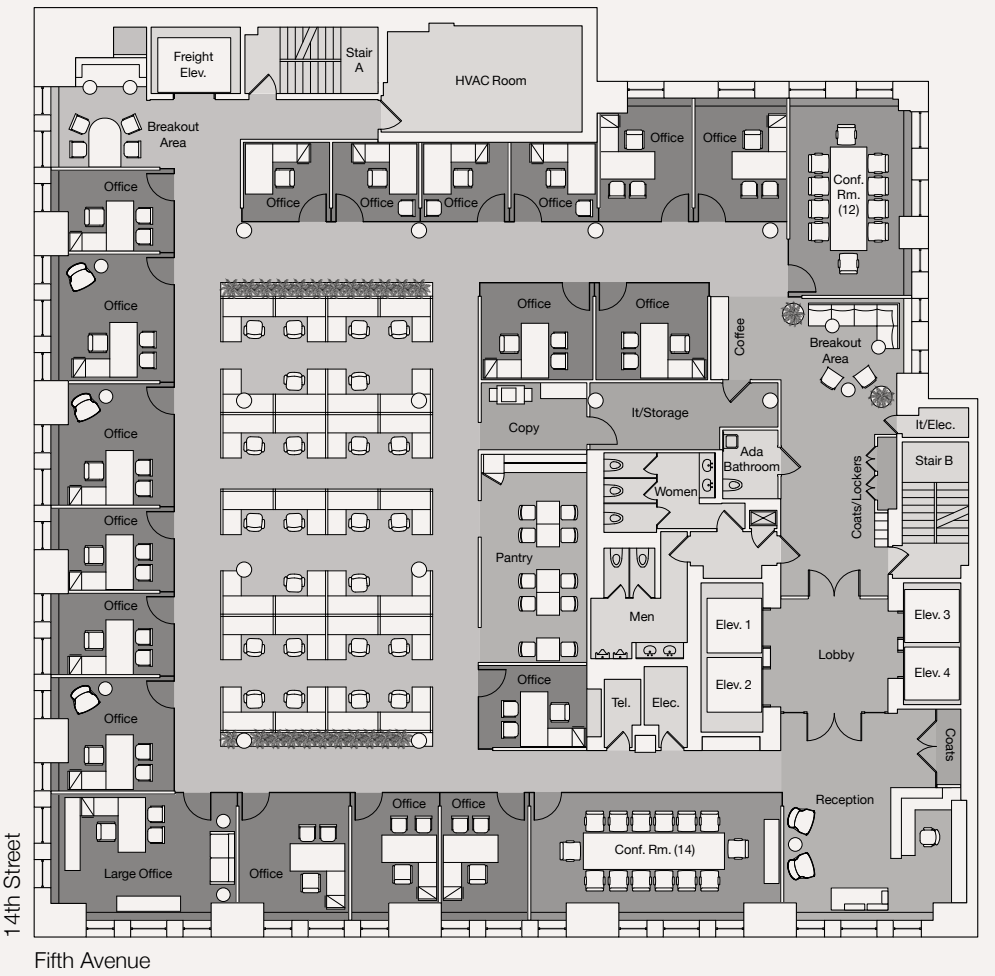
Large Windows



## 01. Core & Shell Plan



## 02. Creative Office Plan





# Roof Terrace

3,000 SF optimized roof terrace designed by STUDIOS Architecture to suit all seasons.

The landscaped roof terrace, with media functionality and WiFi, harmonizes the indoor and outdoor work spaces and promotes collaborative and relaxing work environments that result in increased employee satisfaction, innovation and productivity.



# New arrival experience merges art and real estate.

Redesigned lobby and elevators featuring contemporary design and finishes by STUDIOS Architecture — with branding opportunities on Fifth Avenue and 14th Street.







# The Neighborhood

## Location

One block from Union Square at the northwest corner of 14th Street and Fifth Avenue in the Midtown South Union Square submarket is one of New York City’s most vibrant neighborhoods populated by firms engaged in media, architecture, technology and publishing.

The vibrant community is known for its choice restaurants, diverse retailers, off-Broadway productions, excellent universities and its iconic urban park.

Union Square Park is the centerpiece of the district. Its tree-lined pathways, historic monuments, and popular farmers’ market attract thousands of New Yorkers and tourists each day.

## Transit

With quick access to the 4, 5, 6, F, L, M, N, Q, R, and W subway lines and the 14th Street PATH train, commuters love the ease of access to and from the office.

1 Minute Walk	Union Square Park
4 Minute Walk	Washington Square Park
7 Minute Walk	Madison Square Park
18 Minute Walk	Meatpacking District & High Line

# Leasing information

**Paul J. Amrich**  
212 984 8122  
Paul.Amrich@cbre.com

**Neil V. King**  
212 984 8352  
Neil.King@cbre.com

**Alexander Golod**  
212 984 8357  
Alexander.Golod@cbre.com

**Joshua Pernice**  
212 984 6658  
Josh.Pernice@cbre.com