

# 275

MADISON AVENUE

275

East 40th St

Madison Ave

ONE WAY

WAY

Bike Route

SHARED LANE

GRAND CENTRAL  
BRYANT PARK

VALLEY NATIONAL BANK

275 MADISON AVENUE

# 275

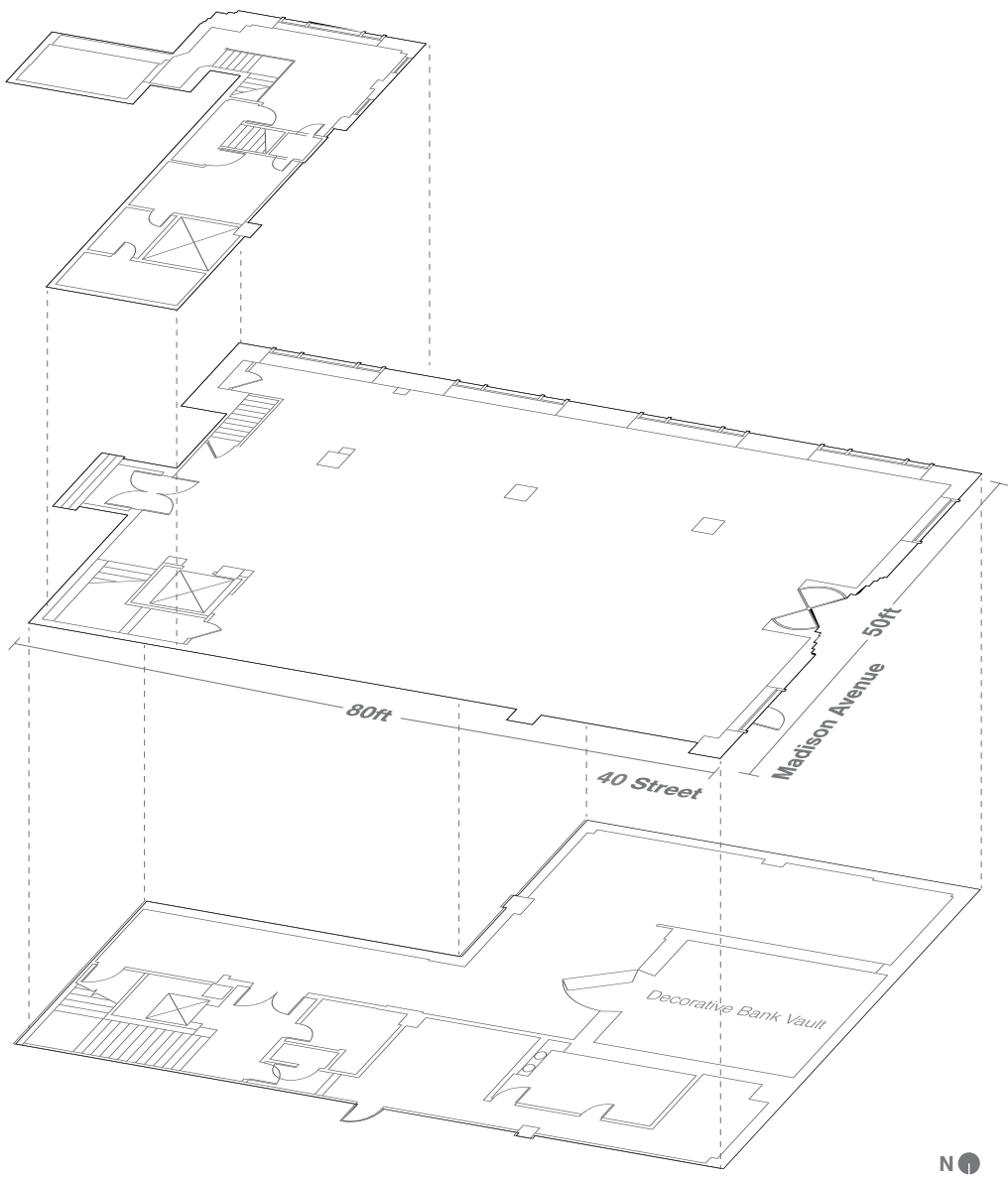
MADISON AVENUE

## Highly Visible Corner Retail Space on Madison Avenue and 40th Street 130ft of Linear Retail Storefront | 3,975sf Street Level | 2,950sf Lower Level Available Immediately

- Corner opportunity with two-story exposure along Madison Avenue
- Ceiling heights up to 20ft
- 50ft on Madison Avenue | 80ft on 40th Street
- Surrounded by 40 million square feet of office space
- In the heart of Grand Central District, 2 blocks from Grand Central Terminal
- Neighboring tenants include Lord & Taylor, Starbucks, Liberty Travel, Zuma Restaurant, RadioShack, T-Mobile, Bank of America, TD Bank, Citibank



# 275 Madison Avenue Floor Plans



**Mezzanine**  
1,050sf

**Street Level**  
3,975sf  
20'-0" Ceiling Height

**Lower Level**  
2,950sf

Floor	Size	Ceiling Height
Mezzanine	1,050sf	20'-0"
Street Level	3,975sf	20'-0"
Lower Level	2,950sf	20'-0"





275 Madison Avenue Storefront Madison Avenue

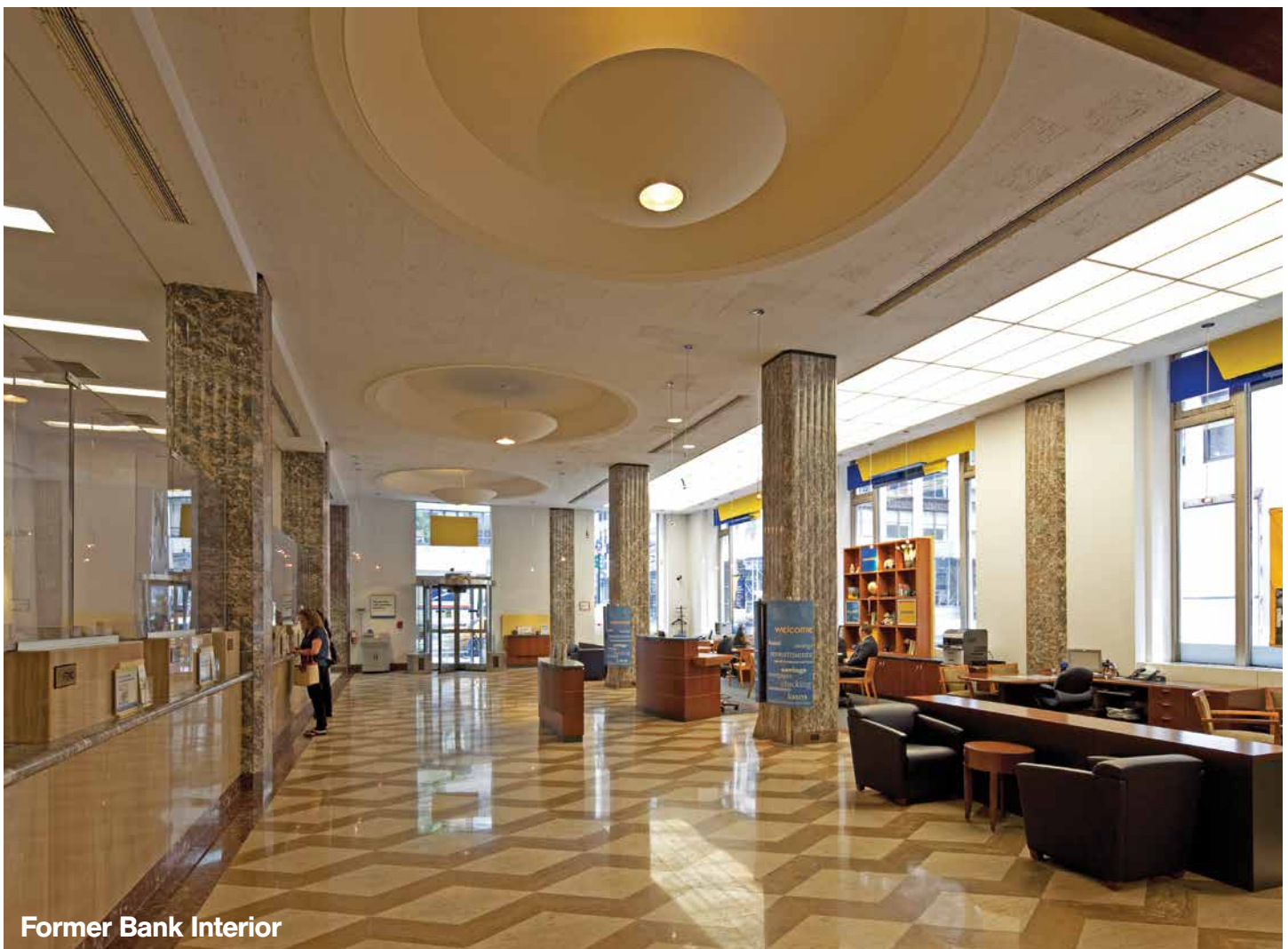


Former Bank Interior



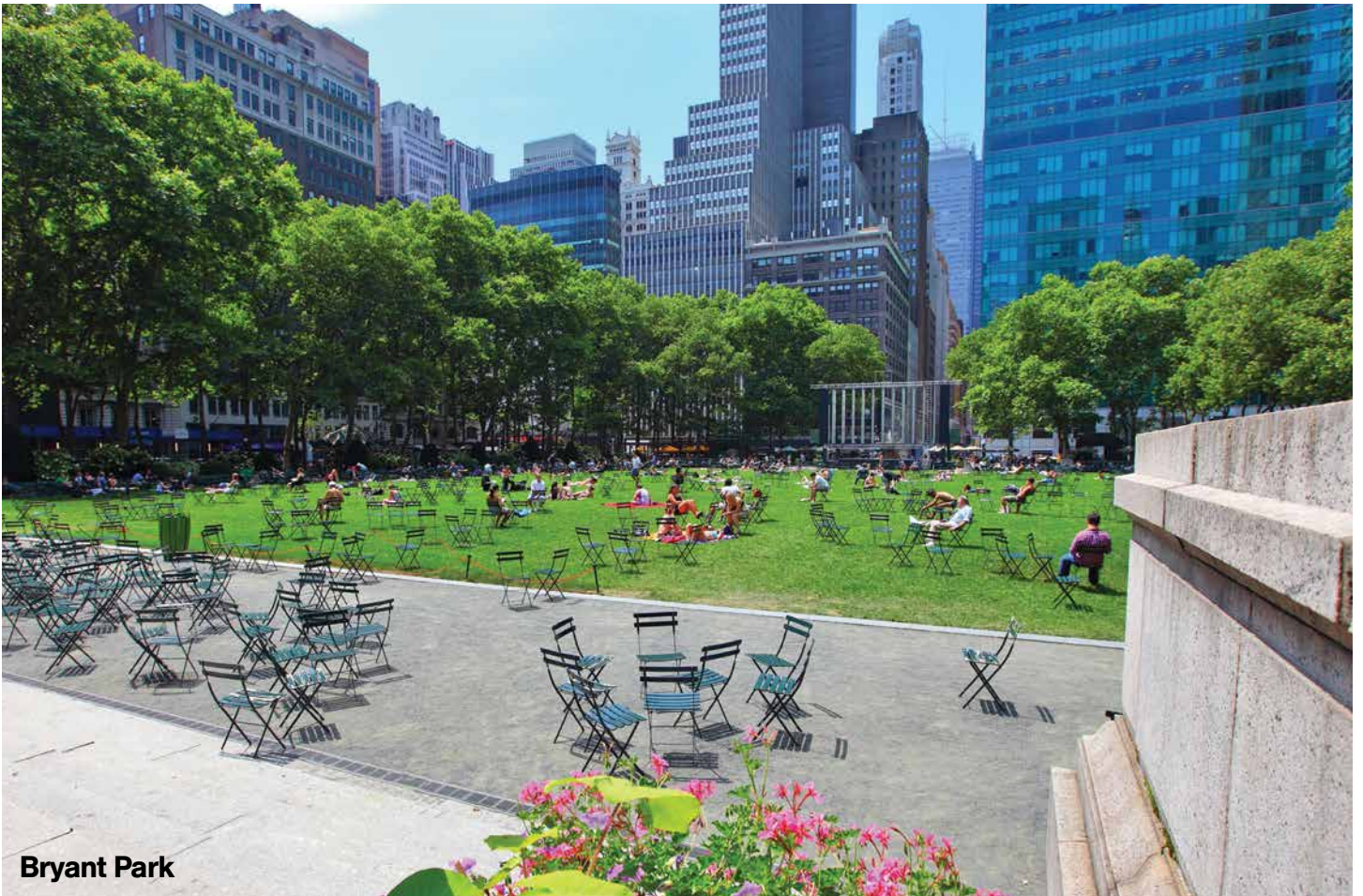


275 Madison Avenue Storefront 40th Street



Former Bank Interior





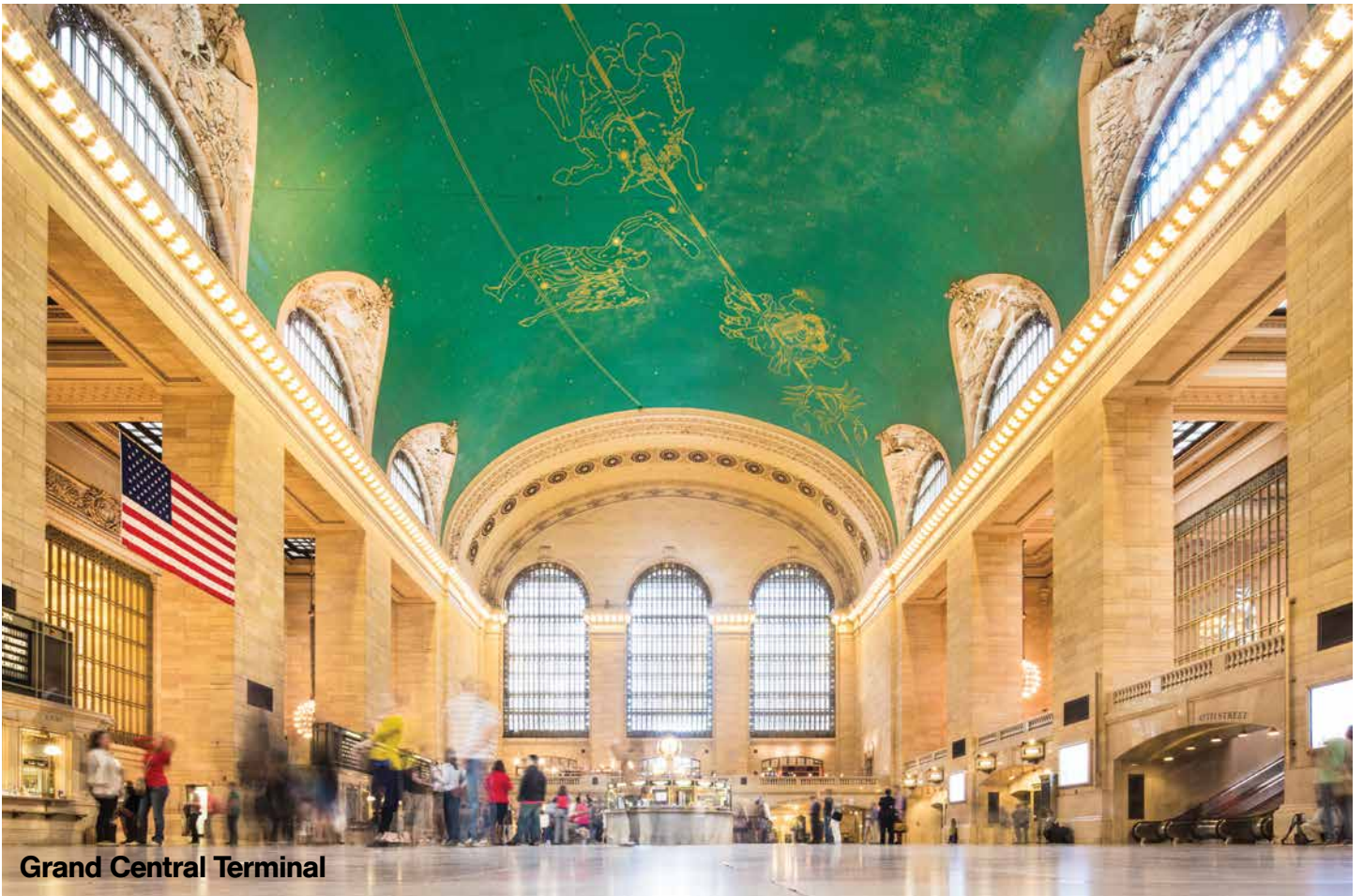
**Bryant Park**



**Fifth Avenue Shopping**







**Grand Central Terminal**



**Fifth Avenue Shopping**





**RFR**  
RETAIL

[rfr.com](http://rfr.com)  
[rfrspace.com](http://rfrspace.com)

**Jordan S. Claffey**  
212 308 2061  
[jclaffey@rfr.com](mailto:jclaffey@rfr.com)