

670

AVENUE OF THE AMERICAS

SOUTHEAST CORNER OF 21ST STREET

mona



NOVA
HOME

NOVAHOME

21ST ST

ONE WAY

mona

*Design subject to LPC approval

SPACE DETAILS

**670 AVENUE OF THE AMERICAS
NEW YORK, NY 10010**

Southeast corner of 21st Street

GROUND FLOOR

2,960 SF

SECOND FLOOR

2,960 SF

LOWER LEVEL

Additional SF available

STATUS

Formerly Bank of America

POSSESSION

Immediate

CEILING HEIGHT

Ground Floor: 10' 6"

Second Floor: 8' 6"

FRONTAGE

40' on Avenue of the Americas

74' on West 21st Street

NEARBY PUBLIC TRANSIT

N Q R W 1 F M

The Path Train



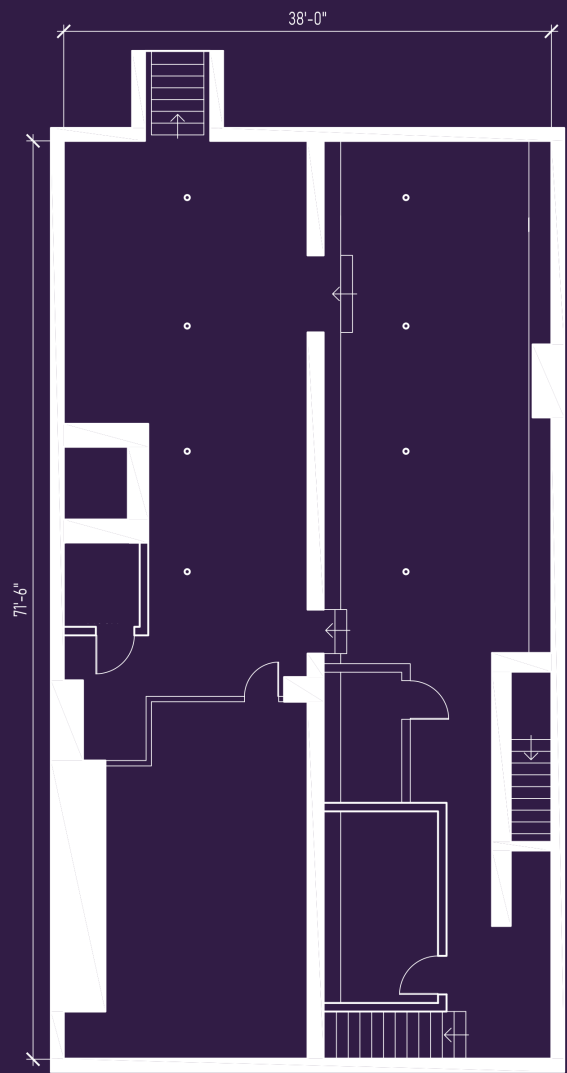
Conceptual Rendering



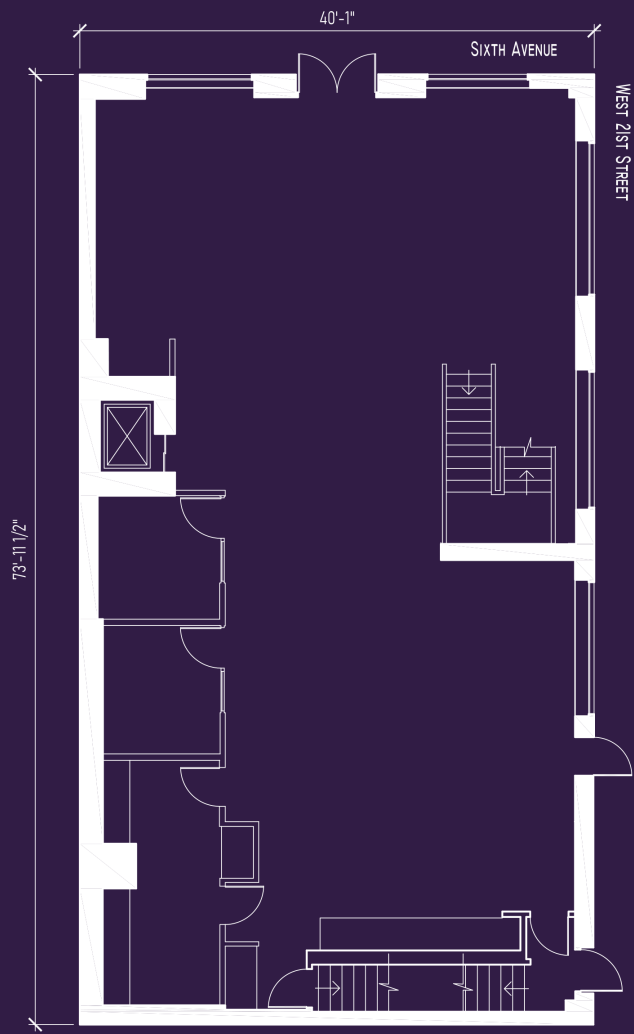
Conceptual Rendering

mona

FLOORPLANS



Lower Level



Ground Floor



Second Floor

HIGHLIGHTS

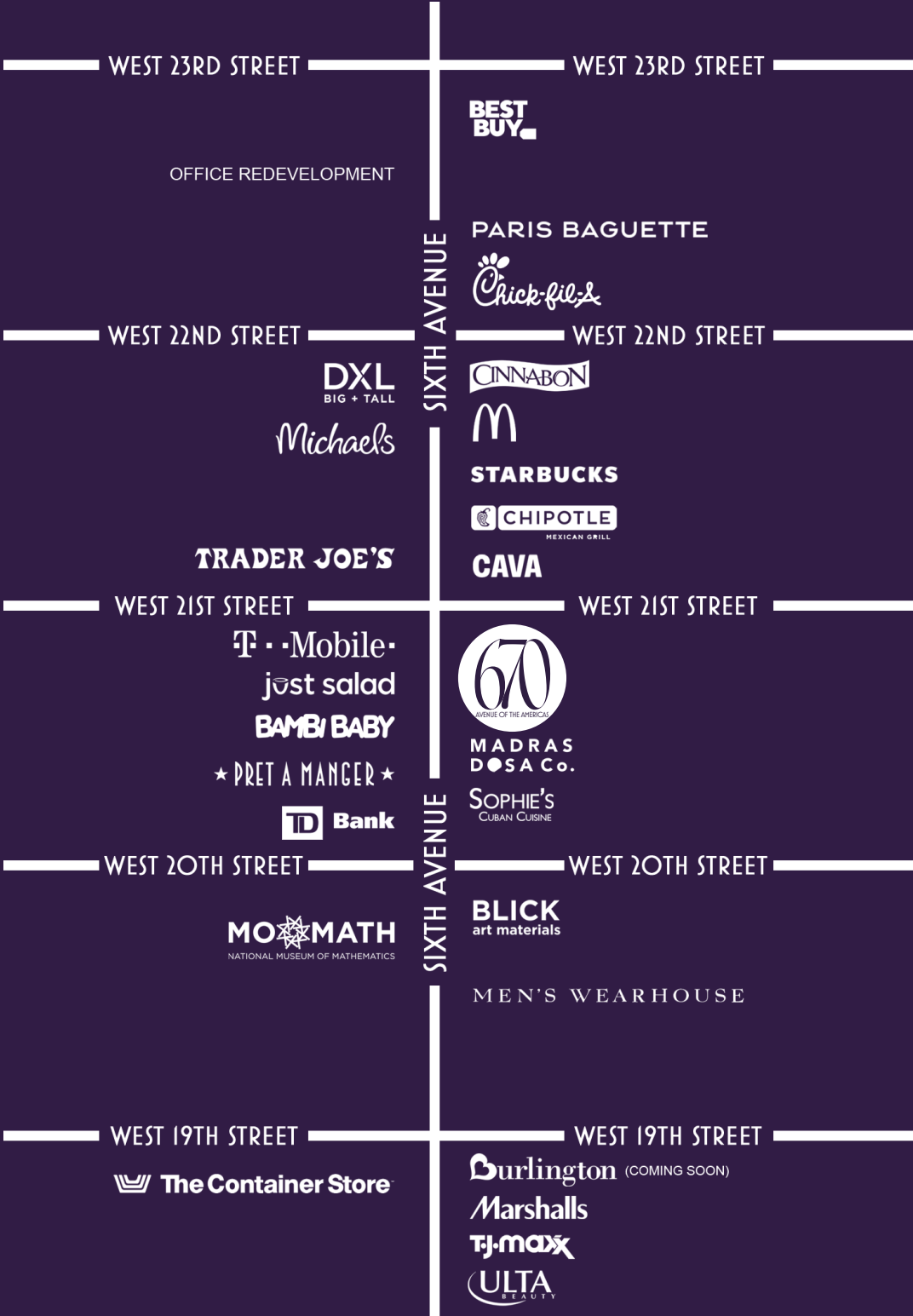
Ground Floor & Second Floor accessible via an internal staircase and elevator.

Substantial storage space in the Lower Level.

Opportunity for multiple LPC approved blade signs. High visibility and foot traffic.

Unique opportunity in one of the busiest retail corridors in Manhattan.

In close proximity to several of New York’s most iconic landmarks, including The Flatiron Building, Madison Square Park, Gramercy Park, and Union Square.





AVENUE OF THE AMERICAS

BRANDON SINGER

brandon@retailbymona.com
516 808 6794

ALEX TURBOFF

alex@retailbymona.com
917 406 1269

JOHN DIGANGI

john@retailbymona.com
516 776 0664

mona